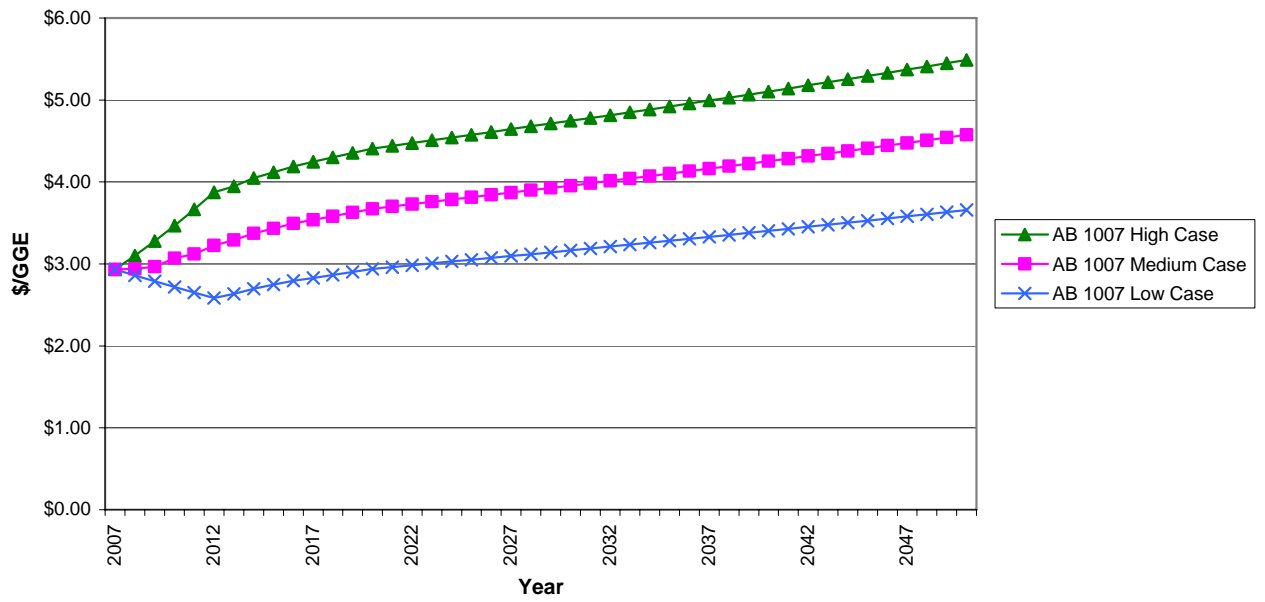


## AB 1007 Fuel Price Forecast

	<b>AB 1007 LOW CASE</b> (20% below medium case beginning in 2013)		<b>AB 1007 MEDIUM CASE</b> (Based on EIA high case)		<b>AB 1007 HIGH CASE</b> (20% above medium case beginning in 2013)	
	<b>RFG</b>	<b>Diesel</b>	<b>RFG</b>	<b>Diesel</b>	<b>RFG</b>	<b>Diesel</b>
2007	\$2.93	\$2.68	\$2.93	\$2.68	\$2.93	\$2.68
2008	\$2.86	\$2.59	\$2.94	\$2.69	\$3.10	\$2.81
2009	\$2.79	\$2.51	\$2.97	\$2.71	\$3.28	\$2.95
2010	\$2.72	\$2.43	\$3.07	\$2.75	\$3.47	\$3.10
2011	\$2.65	\$2.35	\$3.12	\$2.80	\$3.66	\$3.25
2012	\$2.58	\$2.27	\$3.22	\$2.84	\$3.87	\$3.41
2013	\$2.63	\$2.32	\$3.29	\$2.90	\$3.95	\$3.48
2014	\$2.70	\$2.38	\$3.37	\$2.97	\$4.05	\$3.57
2015	\$2.75	\$2.42	\$3.43	\$3.03	\$4.12	\$3.63
2016	\$2.79	\$2.46	\$3.49	\$3.08	\$4.19	\$3.69
2017	\$2.83	\$2.49	\$3.54	\$3.12	\$4.24	\$3.74
2018	\$2.87	\$2.53	\$3.58	\$3.16	\$4.30	\$3.79
2019	\$2.90	\$2.56	\$3.63	\$3.20	\$4.35	\$3.84
2020	\$2.94	\$2.59	\$3.67	\$3.24	\$4.41	\$3.88
2021	\$2.96	\$2.61	\$3.70	\$3.26	\$4.44	\$3.91
2022	\$2.98	\$2.63	\$3.73	\$3.29	\$4.48	\$3.94
2023	\$3.01	\$2.65	\$3.76	\$3.31	\$4.51	\$3.97
2024	\$3.03	\$2.67	\$3.79	\$3.34	\$4.54	\$4.00
2025	\$3.05	\$2.69	\$3.81	\$3.36	\$4.58	\$4.03
2026	\$3.07	\$2.71	\$3.84	\$3.39	\$4.61	\$4.06
2027	\$3.10	\$2.73	\$3.87	\$3.41	\$4.64	\$4.09
2028	\$3.12	\$2.75	\$3.90	\$3.44	\$4.68	\$4.12
2029	\$3.14	\$2.77	\$3.93	\$3.46	\$4.71	\$4.15
2030	\$3.16	\$2.79	\$3.96	\$3.48	\$4.75	\$4.18
2031	\$3.19	\$2.81	\$3.98	\$3.51	\$4.78	\$4.21
2032	\$3.21	\$2.83	\$4.01	\$3.54	\$4.82	\$4.24
2033	\$3.23	\$2.85	\$4.04	\$3.56	\$4.85	\$4.27
2034	\$3.26	\$2.87	\$4.07	\$3.59	\$4.89	\$4.30
2035	\$3.28	\$2.89	\$4.10	\$3.61	\$4.92	\$4.34
2036	\$3.31	\$2.91	\$4.13	\$3.64	\$4.96	\$4.37
2037	\$3.33	\$2.93	\$4.16	\$3.67	\$4.99	\$4.40
2038	\$3.35	\$2.95	\$4.19	\$3.69	\$5.03	\$4.43
2039	\$3.38	\$2.98	\$4.22	\$3.72	\$5.07	\$4.46
2040	\$3.40	\$3.00	\$4.25	\$3.75	\$5.10	\$4.50
2041	\$3.43	\$3.02	\$4.28	\$3.77	\$5.14	\$4.53
2042	\$3.45	\$3.04	\$4.32	\$3.80	\$5.18	\$4.56
2043	\$3.48	\$3.06	\$4.35	\$3.83	\$5.22	\$4.59
2044	\$3.50	\$3.09	\$4.38	\$3.86	\$5.25	\$4.63
2045	\$3.53	\$3.11	\$4.41	\$3.88	\$5.29	\$4.66
2046	\$3.55	\$3.13	\$4.44	\$3.91	\$5.33	\$4.70
2047	\$3.58	\$3.15	\$4.48	\$3.94	\$5.37	\$4.73
2048	\$3.61	\$3.18	\$4.51	\$3.97	\$5.41	\$4.76
2049	\$3.63	\$3.20	\$4.54	\$4.00	\$5.45	\$4.80
2050	\$3.66	\$3.22	\$4.57	\$4.03	\$5.49	\$4.83

**RFG Price Forecast**



**Diesel Price Forecast**

