

# How to Build a Successful AB811 Program

*Putting It All Together*



Brian Gitt, Principal

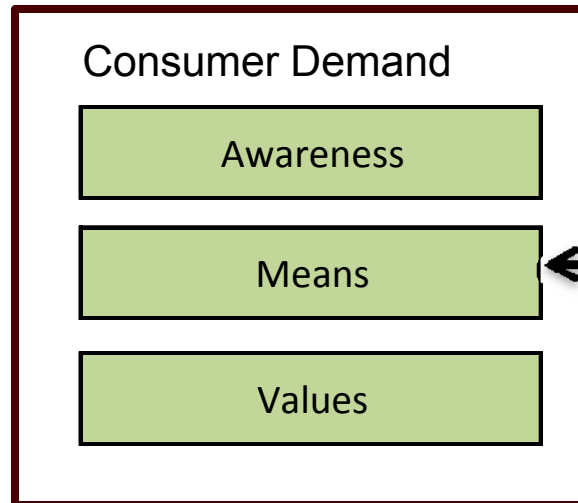
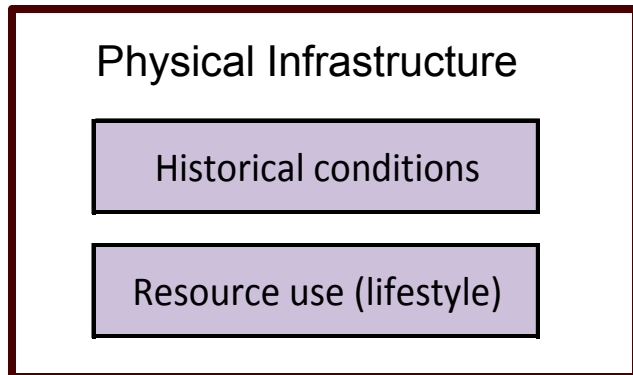
# Present Barriers

- Policy:** Lack of effective state and local government retrofit trigger mechanisms
- Technical:** Fragmented existing building stock requires complex solutions and is difficult to scale
- Consumer:** Widespread lack of awareness of costs and benefits
- Financing:** Not widely available and tied to owner not property
- Workforce:** Gaps in knowledge, skills, and experience limit scale
- Delivery:** Gaps in knowledge, skills, and experience limit scale
- Research:** Lack of coordination between existing low, moderate, and upper income programs  
Gaps in research data and difficult to access

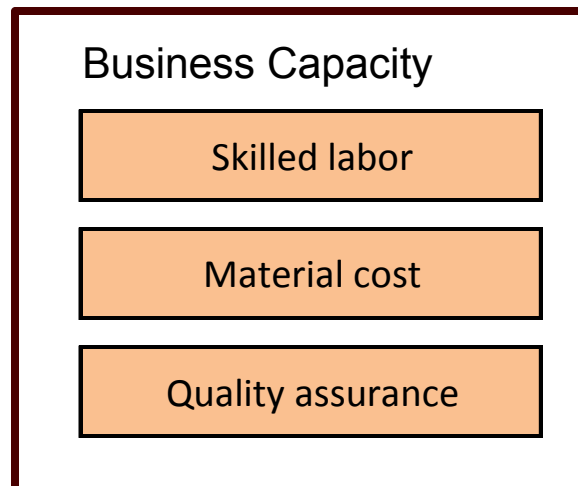
# American Recovery and Reinvestment Act of 2009

- **State Energy Program - \$3.1B** .....CEC \$226M
- **Energy Efficiency & Conservation Block Grants - \$3.2B**
  - ...CA local governments \$302M & CEC \$49.6M
  - ...also \$456M competitive grant opportunities
- **Neighborhood Stabilization Program – \$2.0B**
- **Green Jobs - \$500M**
- **Weatherization Assistance Program - \$5B**... CSD \$185M
- **Energy Efficient Appliance Rebate Programs - \$300M**

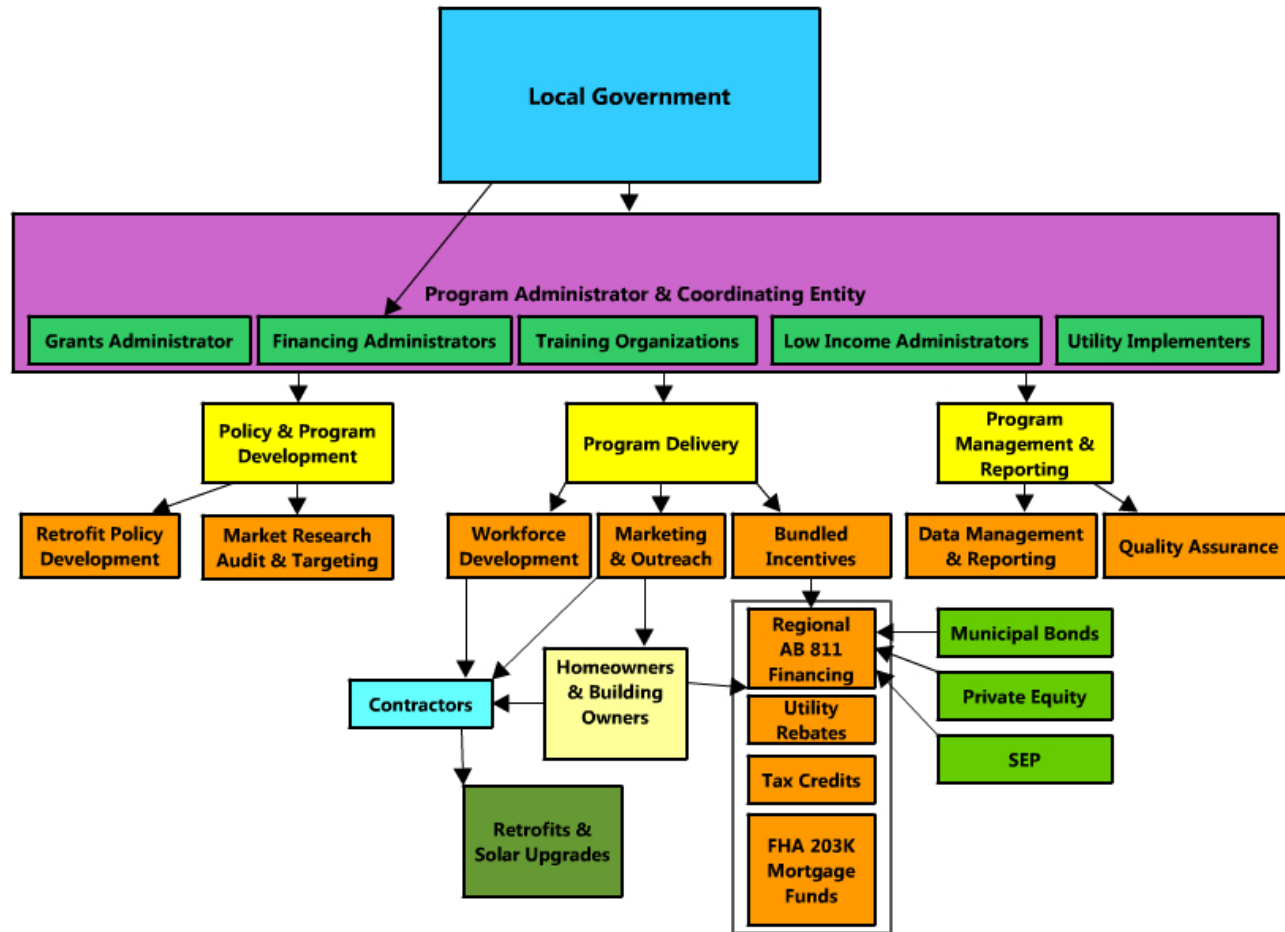
# The Challenges (The Big Picture)



← Upfront cost



# Program Elements



# Benefits of Coordination

- Economies of scale
- Comprehensive network of workforce development, quality assurance, and resource benefit tracking expertise
- Leveraging and coordination of funding sources
- Consistent regional messaging, marketing and education
- Coordination with other partners (water agencies, COG, etc.)
- Save time and cost in doing the AB811 financing district
- Consistent program design

# Recommended CEC Next Steps

- ❑ Allocate portion of SEP funds for local government comprehensive community-scale retrofit and solar programs
  - ❑ Establish a revolving fund to provide interim financing
  - ❑ Provide matching funds to regional governmental entities for program assembly, setup, and operations
  - ❑ Create loan loss and interest rate float reserve fund
  - ❑ Establish statewide public education and marketing fund
  - ❑ Develop funding guidelines that require local governments to coordinate regionally and promote loading order

# Contact

---

**BKi**

**Brian Gitt, Principal**

**510-444-8707 ext. 238**

***[brian@bki.com](mailto:brian@bki.com)***

**1000 Broadway, Suite 410**

**Oakland, CA 94607**

