



**CALIFORNIA
ENERGY COMMISSION**



**CALIFORNIA
NATURAL
RESOURCES
AGENCY**

California Energy Commission
Clean Transportation Program

FINAL PROJECT REPORT

Scaling Up the True Zero Network

**Hydrogen Station – 337 East Hamilton
Avenue, Campbell, CA 95008**

Prepared for: California Energy Commission

Prepared by: FirstElement Fuel, Inc.

March 2024 | CEC-600-2024-030

California Energy Commission

Tim Brown

George Wu

Primary Authors

FirstElement Fuel, Inc.

5281 California Ave, Suite 260

Irvine, CA 92617

(949) 205-5553

[Company Website](http://www.truezero.com) (www.truezero.com)

Agreement Number: ARV-16-029

Miki Crowell

Commission Agreement Manager

Elizabeth John

Office Manager

MEDIUM- AND HEAVY-DUTY ZERO EMISSION TECHNOLOGIES OFFICE

Hannon Rasool

Deputy Director

FUELS AND TRANSPORTATION

Drew Bohan

Executive Director

DISCLAIMER

This report was prepared as the result of work sponsored by the California Energy Commission (CEC). It does not necessarily represent the views of the CEC, its employees, or the State of California. The CEC, the State of California, its employees, contractors, and subcontractors make no warrant, express or implied, and assume no legal liability for the information in this report; nor does any party represent that the use of this information will not infringe upon privately owned rights. This report has not been approved or disapproved by the CEC nor has the CEC passed upon the accuracy or adequacy of the information in this report.

ACKNOWLEDGEMENTS

The construction of the Campbell East Hamilton hydrogen refueling station has only been possible because of the substantial efforts and funds provided by a number of stakeholders.

FirstElement Fuel graciously thanks Toyota for their vision and fortitude, Honda for their innovation and environmental commitment, Linde for their partnership in advancing sustainable hydrogen infrastructure, Tatsuno for their dedication to innovation and reliability, and of course, Jean Baronas, Miki Crowell, Kevyn Piper, and many others at the California Energy Commission for tremendous, sustained confidence in clean, alternative transportation.

PREFACE

Assembly Bill 118 (Núñez, Chapter 750, Statutes of 2007) created the Clean Transportation Program. The statute authorizes the California Energy Commission (CEC) to develop and deploy alternative and renewable fuels and advanced transportation technologies to help attain the state's climate change policies. Assembly Bill 8 (Perea, Chapter 401, Statutes of 2013) reauthorizes the Clean Transportation Program through January 1, 2024, and specifies that the CEC allocate up to \$20 million per year (or up to 20 percent of each fiscal year's funds) in funding for hydrogen station development until at least 100 stations are operational.

The Clean Transportation Program has an annual budget of about \$100 million and provides financial support for projects that:

- Reduce California's use and dependence on petroleum transportation fuels and increase the use of alternative and renewable fuels and advanced vehicle technologies.
- Produce sustainable alternative and renewable low-carbon fuels in California.
- Expand alternative fueling infrastructure and fueling stations.
- Improve the efficiency, performance and market viability of alternative light-, medium-, and heavy-duty vehicle technologies.
- Retrofit medium- and heavy-duty on-road and nonroad vehicle fleets to alternative technologies or fuel use.
- Expand the alternative fueling infrastructure available to existing fleets, public transit, and transportation corridors.
- Establish workforce-training programs and conduct public outreach on the benefits of alternative transportation fuels and vehicle technologies.

To be eligible for funding under the Clean Transportation Program, a project must be consistent with the CEC's annual Clean Transportation Program Investment Plan Update. The CEC issued Grant Funding Opportunity (GFO)-15-605, Light Duty Vehicle Hydrogen Refueling Infrastructure to provide grant funds to expand the network of publicly accessible hydrogen refueling stations that serve California's light duty fuel cell electric vehicles (FCEVs). In response to GFO-15-605, FirstElement Fuel submitted an application which was proposed for funding in the CEC's notice of proposed awards February 17, 2017, and the agreement was executed as ARV-16-029 on July 25, 2017.

ABSTRACT

Per funding agreement ARV-16-029 between the California Energy Commission (CEC) and FirstElement Fuel, Inc. (FEF), FEF designed, engineered, permitted, constructed, and commissioned a hydrogen refueling station at 337 East Hamilton Avenue, Campbell, CA 95008. FEF plans to own and operate the hydrogen refueling station until at least 2025. The hydrogen refueling station consists of an enclosed compound, or building, that houses compressing and dispensing equipment, high pressure storage tubes, two dispensers each with two fueling positions, a customer payment interface, and canopy for one of the dispensers.

Keywords: California Energy Commission, FirstElement Fuel, Inc., hydrogen refueling station, hydrogen infrastructure, fuel cell vehicles

Please use the following citation for this report:

Brown, Tim (FirstElement Fuel, Inc.). 2022. *Scaling Up the True Zero Network. Hydrogen Station – 337 East Hamilton Avenue, Campbell, CA 95008*. California Energy Commission. Publication Number: CEC-600-2024-030.

TABLE OF CONTENTS

	Page
Acknowledgements	i
Preface.....	ii
Abstract	iii
Table of Contents.....	v
List of Figures.....	vi
List of Tables	vi
Executive Summary.....	1
CHAPTER 1: Purpose.....	3
Inherent Efficiency of Liquid Hydrogen	3
Higher Capacity Results in Lower Price at the Pump	4
Sustainability and Environmental Impacts	4
CHAPTER 2: Approach.....	6
Field Service Operations Technical Training	6
Field Service Safety Training	6
Communication	6
Training Methods	6
Special Work.....	7
Contractors	7
Station Operation and Maintenance.....	7
CHAPTER 3: Activities Performed	8
Site Acquisition	8
Equipment Procurement	9
Site Design and Engineering	10
Entitlement.....	10
Building Plan Check.....	10
Site Preparation and Construction	12
Equipment Installation.....	12
Energization and Mechanical Connections	14
Commissioning.....	15
Station Testing.....	16
Operational and Open Retail	16
CHAPTER 4: Results	19
Data Collection and Energy Analysis	19
Subcontractors and Budgets	20
Statement of Future Intent	21
Findings, Conclusions, and Recommendations.....	21

Glossary	23
----------------	----

LIST OF FIGURES

	Page
Figure 1: Liquid Hydrogen and Gaseous Hydrogen Delivery Trucks.....	4
Figure 2: Property View During Acquisition Phase	9
Figure 4: Overall Site Layout – Campbell East Hamilton.....	10
Figure 5: Approved Building Plans.....	11
Figure 6: Breaking Ground at the Campbell East Hamilton Station.....	12
Figure 7: Linde Equipment Installation at the Campbell East Hamilton Station	13
Figure 8: Tatsuno Dispenser Installation Progress at the Campbell Hamilton Station	14
Figure 9: DMS Sticker (next to Emergency Stop) on Dispenser.....	16
Figure 10: SOSS – Campbell East Hamilton.....	17
Figure 11: Customer Fueling at the Campbell East Hamilton Station	18
Figure 12: Completed Campbell East Hamilton Hydrogen Station	19

LIST OF TABLES

	Page
Table 1: Commissioning Checklist	15
Table 2: Data Collection During First Year	20
Table 3: Agreement Budget – Campbell East Hamilton	21

Note: If needed, insert a blank page so that Executive Summary begins on the left side in two-page electronic view (same side as the cover page).

EXECUTIVE SUMMARY

Hydrogen fuel cell electric vehicles (FCEVs) and hydrogen refueling stations are expected to play key roles in California as the state transitions to lower-carbon and zero-emission vehicle (ZEV) technologies for light-duty passenger vehicles, transit buses, and truck transport fleets. Numerous government regulations and policy actions identify FCEVs as a vehicle technology that will be available to meet the California Air Resources Board Zero Emission Vehicle Regulation and the Governor's zero emission vehicle mandate. The Governor's *Zero Emission Vehicle Action Plan* specifies actions to bring FCEVs to California markets.

Hydrogen fuel cell electric drive technology offers tremendous potential for the light-duty passenger vehicle market and medium- and heavy-duty truck and bus markets. FCEV passenger vehicles can drive more than 300 miles on a tank of hydrogen and can be refueled in three to four minutes the way gasoline passenger vehicles are fueled. FCEVs have zero tailpipe emissions, while the carbon footprint of these vehicles is nearly the same as plug-in electric vehicles. The technology can be readily scaled up for sport utility vehicles, family passenger vans, pick-up trucks, urban package and beverage delivery trucks, and heavy-duty trucks and buses. Most auto industry analysts and agencies view fuel cell electric drive technology as a complement to battery electric drive technologies, rather than as a competing technology. Both battery and FCEV technologies will be needed in California to achieve the ZEV deployment goals.

In contrast to battery electric and plug-in hybrid electric vehicles that can be charged in home settings, FCEVs require a new network of refueling stations that dispense pressurized hydrogen. As a result, the auto industry and station development industry have had to co-develop two new technologies in parallel: hydrogen fuel cell electric vehicles and hydrogen refueling infrastructure. The auto industry cannot market and sell FCEVs widely to consumers without a minimum network of refueling stations available.

Assembly Bill (AB) 118 (Núñez, Chapter 750, Statutes of 2007), created the Clean Transportation Program. The statute authorizes the California Energy Commission (CEC) to develop and deploy alternative and renewable fuels and advanced transportation technologies to help attain the state's climate change, clean air, and alternative energy policies. AB 8 (Perea, Chapter 401, Statutes of 2013) re-authorizes the Clean Transportation Program through January 1, 2024.

The CEC issued solicitation Grant Funding Opportunity (GFO)-15-605, Light Duty Vehicle Hydrogen Refueling Infrastructure, to provide grant funds to expand the network of publicly accessible hydrogen refueling stations that serve California's light duty FCEVs. In response to GFO-15-605, FirstElement Fuel, Inc. submitted an application for a number of stations, including one to be located at 337 East Hamilton Avenue, Campbell, CA 95008, which was proposed for funding in the CEC's Notice of Proposed Awards on February 17, 2017.

The Campbell East Hamilton hydrogen station is the fifth liquid hydrogen station that FEF has opened which has a fueling capacity of more than 1,200 kilograms per day.

Note: If needed, insert a blank page so that Chapter 1 begins on the left side in two-page electronic view (same side as the cover page).

CHAPTER 1:

Purpose

As fuel cell electric vehicle (FCEVs) are deployed in greater quantities, a network of refueling stations is needed to provide fueling coverage which takes advantage of the range of the vehicle. This agreement provides a hydrogen refueling station at 337 East Hamilton Avenue, Campbell, CA 95008. The station equipment stores liquid hydrogen and dispenses gaseous hydrogen.

This project helps address scientific and technical barriers to the build out of hydrogen refueling infrastructure, including addressing the limited availability of hydrogen refueling infrastructure performance data by delivering station performance data for larger capacity stations, namely those that can provide up to 606 kilogram (kg) of hydrogen in 12 hours, or over 1212 kg in 24 hours.

Improvements to the network of hydrogen refueling stations and an expected corresponding increase in FCEVs will support the carbon reduction and air quality improvement goals of the state of California, such as the zero emission vehicle (ZEV) mandate, which calls for sufficient alternative refueling infrastructure to support up to 1 million ZEVs by 2020, reaching 1.5 million ZEVs on the road in California by 2025. Hydrogen FCEVs are expected to play a critical role in meeting the ZEV mandate targets.

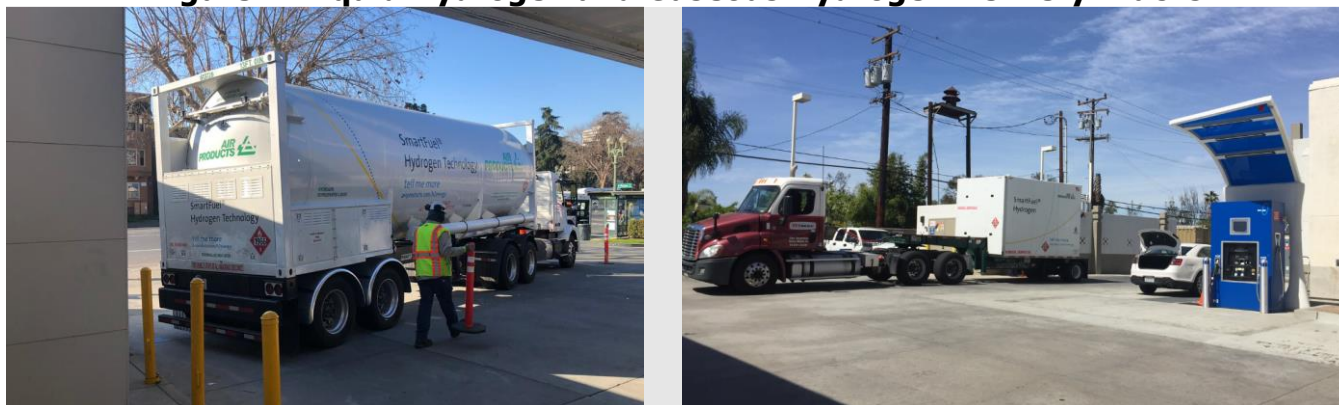
Inherent Efficiency of Liquid Hydrogen

Liquid hydrogen, as used at the Campbell East Hamilton station, has storage, transportation, and pumping efficiencies compared to gaseous hydrogen in refueling infrastructure scenarios. Compression of gaseous hydrogen at refueling stations to fill FCEVs fully requires 3 to 5 kilowatt hour per kilogram (kWh/kg) of electricity. Because pumping liquid hydrogen is much more efficient than compressing gaseous hydrogen, liquid pump stations use less than 1 kWh/kg to accomplish the same task. This is important because electricity at hydrogen stations can be expensive and is generally hard to make renewable.

Because of the extremely cold temperature of liquid hydrogen (-416°F), no additional refrigeration system is required to meet fueling protocol in the SAE J2601 standard cold fill requirements. This saves capital costs, reduces electricity consumption, and in FirstElement Fuel's (FEF) experience, improves reliability.

Delivery of liquid hydrogen is common in the industrial gas sector. This means that the safety, costs, and operational experience of using liquid hydrogen are well understood. Liquid hydrogen delivery trucks can carry 10 or more times the deliverable hydrogen as equivalently sized gaseous hydrogen trucks (Figure 1). This higher capacity enables multiple stops and without constantly returning to the plant to get a new load and substantially reduces emissions and carbon associated with trucking hydrogen.

Figure 1: Liquid Hydrogen and Gaseous Hydrogen Delivery Trucks



Liquid hydrogen truck can deliver 2,400 kg (left) compared to 120 kg for gaseous hydrogen truck (right).
Source: FirstElement Fuel, Inc.

Higher Capacity Results in Lower Price at the Pump

Because of the FEF's dedicated hydrogen supply, volume equipment purchasing, CEC grant funding, and California Air Resources Board's hydrogen refueling infrastructure (HRI) credit value, FEF has been able to lower the hydrogen price at the pump to \$13.00 per kg (about \$5.20 of comparative gasoline) decreasing the current price at the pump significantly.

With the Campbell East Hamilton station capacity of 1,212 kg/day:

- Installed two dual sided dispensers, one with two H70 hoses and one H35 hose and the other with two H70 hoses. This configuration allows for four fueling positions (any three can be used simultaneously) to improve customer experience and reduce wait times
- Have over 900 kg of storage to mitigate potential supply disruptions better
- Reduce retail hydrogen price in comparison with gasoline and bring price parity

These leaps in performance and price are made possible by moving to liquid hydrogen production, distribution, storage, and pumping. Producing liquid hydrogen generally takes more energy compared with gaseous hydrogen, but the storage costs and energy densities exceed those of gaseous hydrogen. Like most industrial processes, scale is an important factor in both cost and efficiency for hydrogen production. Because liquid hydrogen is relatively inexpensive to store and transport, a single large, efficient, and optimized facility can be used to serve the entire network. This efficiency results in lower cost hydrogen supply. In addition, pumping liquid hydrogen is inherently more efficient than compressing gaseous hydrogen. Therefore, the pumps used at the Campbell East Hamilton station is considerably smaller, more efficient, with higher throughput, and lower cost than comparable compressor systems.

The advantages of liquid hydrogen production, delivery, and storage are common knowledge in the hydrogen industry. But most stations rely on gaseous hydrogen because, historically, there has been enough excess gaseous hydrogen from existing industrial applications for the insignificant amount needed for FCEVs, and because new liquid hydrogen production requires substantial capital investment. FEF is fortunate to have developed a secure source for liquid hydrogen for the current batch of stations that will enable a substantial reduction in the price of hydrogen at the pump.

Sustainability and Environmental Impacts

FEF notes that hydrogen and FCEVs are among the most effective means to achieve sustainable transportation in California; this is part of FEF's mission statement and the

motivation for starting this company in the first place. FEF aims to grow the proportion of FCEVs on the road as quickly as possible so that California, and the world, can capitalize fully on the environmental benefits of electric propulsion. FEF understands that, based on years of analysis and research, FCEVs can change the world in a positive way by:

- Reducing criteria pollutant emissions
- Improving urban air quality
- Reducing greenhouse gas emissions
- Reducing dependency on petroleum

Part of the FEF core business strategy is to accelerate the adoption of FCEVs and to maximize the potential environmental benefits simultaneously through a conscientious approach to the fuel supply chain, the operation of hydrogen station projects, and throughout the hydrogen station development and construction process for the hydrogen station in Campbell, CA.

CHAPTER 2:

Approach

FEF has worked hard and considers itself to have built the largest, most experienced, and dedicated team for retail opening and operation of hydrogen refueling stations. FEF has successfully created the largest and most reliable hydrogen refueling network in the world and has provided original equipment manufacturers (OEMs) the confidence to release FCEVs on a large scale into the California market. FEF stations have the best up-time performance in California. Primary in the FEF culture is a focus on the customer experience and on the safety and security of the FEF team and stations. To that end, FEF has developed and continues to refine rigorous technical and safety training procedures for service and maintenance personnel.

Field Service Operations Technical Training

FEF Technical Training policies are intended to ensure that personnel have the right tools and experience required for the job. No employee is put in a situation where their safety is compromised. For that reason, FEF has implemented a competence tracking system where employees are graded based on their competence in a specific field of work. The four major competence categories include:

- Observer: personnel can only assist in a task
- Supervised: personnel can perform the task only if supervised
- Independent: personnel can perform the work unsupervised
- Trainer: personnel can train others on the task

For an employee to be qualified to work independently in the field, they must meet the competence criteria after working with a trainer for enough time. A typical supervised training period is one to two months or more.

Field Service Safety Training

In addition to hands-on station operational technical training, FEF personnel are constantly discussing, learning, and reviewing general safety procedures and operations.

Communication

The Field Service Team meets three times per week to discuss operational status and safety procedures. A new safety topic is introduced at every meeting and is discussed during at least three meetings. Additionally, prior to beginning every operational meeting a moment is taken to discuss a "Safety Moment."

Training Methods

The safety training program uses some or all of the following communication methods: video instruction, group discussion, homework, quick phone quizzes, and when possible, practical hands-on practice. Attendance is tracked to ensure that, at a minimum, each employee attends two of these safety sessions. At these meetings, all new policies and procedures are introduced, and the employee is told where this information resides within the company.

Special Work

When a new task is being conducted or the task does not have established procedures, all pertinent employees are trained on performing a job hazard analysis prior to beginning the work.

Contractors

In some cases, where FEF requires the help of a contractor, for example in construction, refrigeration, or crane operation, FEF only employs contractors who are qualified to do the work, have a similar vision for safety, and have a proven track record. FEF reviews these records through contractor's U.S Occupational Safety and Health Administration Form 300A for the past three years. If there are any major injuries in the records, FEF investigates further to ensure that the contractor has the right culture and policies in place.

Station Operation and Maintenance

FEF has established a preventive maintenance plan for the Campbell East Hamilton station that mandates monthly, quarterly, semi-annual, and annual scheduled maintenance activities. Each week the team manager reviews the preventive maintenance schedule for FEF's stations, opens work orders for each station with the tasks to be completed by the technicians on duty, and verifies completion of the prior week's work orders. As a routine part of the scheduling, the team managers arrange the planned maintenance activities to avoid cluster shutdowns of adjacent stations in the network that would otherwise create area-wide unavailability.

Far too often a robust service maintenance plan falters due to lack of communication. Therefore, simply relying on a chart of maintenance activities on a map is not sufficient. FEF goes a few steps further. The FEF hydrogen engineers are in constant contact with each other, literally 24 hours a day, seven days a week. The team also meets three times a week for operational meetings with management, schedulers and service technicians. FEF uses internal social media apps and cloud-based documentation for companywide communication at all times. The entire team knows the status of all activities at each station from any connected computer, tablet, or smart phone. This communication serves greatly in the coordination of planned maintenance, emergency maintenance, stress testing, press events, employee vacations, etc.

Additionally, FEF coordinates its planned maintenance activities at the Campbell East Hamilton station by instructing all technicians to plan work such that outage time is minimized and the station can return to working conditions with limited down time. Each technician has a personalized sign to let customers know that maintenance is being done, but the station is still open to help minimize the down time for customers.

CHAPTER 3:

Activities Performed

FEF took many steps to bring the Campbell East Hamilton hydrogen refueling station project to completion. The following synopsis highlights the most critical items, provides detail on each one, and states the timing required for each step for this project.

Site Acquisition

Three independent objectives must be achieved to develop a successful hydrogen station project:

- 1) The location must meet the needs of customers
- 2) The parcel must have sufficient space to install hydrogen fueling equipment safely
- 3) The landowner and/or business operator must be willing to participate

FEF searches for sites by first selecting specific geographic areas, then narrowing down to only those sites that have room for hydrogen fueling equipment, and finally, negotiating with landowners.

In early 2016, FEF took steps to identify and acquire appropriate sites for the station. FEF worked with historic vehicle sales data, academic publications, OEMs, and the CEC's Station Location Areas specified in the solicitation to select desired market locations. FEF then analyzed specific properties within the target locations to find sites that could meet the space requirements for hydrogen fueling equipment.

After selecting general locations and specific sites, FEF contacted station owners and operators to negotiate lease opportunities. FEF executed a 10-year lease with the property owner of 337 East Hamilton Avenue, Campbell, CA 95008 on April 29, 2016.

Figure 2: Property View During Acquisition Phase



View of the property where the station is located, looking from Central Ave.

Source: FirstElement Fuel, Inc.

Equipment Procurement

The equipment packages installed at the Campbell East Hamilton Hydrogen Refueling Station is comprised of three main components: compressing and dispensing equipment manufactured by Linde, LLC; ground storage unit manufactured by FIBA; and point of sale (dispenser) manufactured by Tatsuno. The FEF team started the equipment procurement process early on in the station development, evaluating and visiting various component and part suppliers. As a hydrogen station integrator, FEF assessed and helped design an equipment package utilizing leaders in the industry to assemble an equipment package that exceeded the minimum technical requirements in the solicitation.

As a result of efficiencies of liquid hydrogen listed in chapter 1, FEF decided to upgrade the throughput and capacity of the Campbell East Hamilton station bringing the station dispensing capacity per day to 1,212 kg of hydrogen. This decision to upgrade the station capacity resulted in a delay in the approval and engineering design process and more expenditures by FEF, but the added benefits (improved customer experience, storage to weather supply disruptions, and lower price at pump) of the increased capacity far outweighed the delay and the additional cost to FEF.

Figure 4: Overall Site Layout – Campbell East Hamilton



Source: FirstElement Fuel, Inc.

Site Design and Engineering

The site design for the Campbell East Hamilton station started on April 7, 2017, where FEF engaged internal permitting and engineering teams to proceed with design scope. As a result of upgrading equipment package, the project team spent additional time modifying the equipment footprint with the equipment supplier and engineering team, with site design drawings released on June 6, 2018, allowing the project to proceed with entitlement approval process.

Entitlement


The local planning department typically verifies that the project meets the zoning requirements of the proposed location, and approve any aesthetic, landscaping or other details that are important to the community.

FEF submitted an entitlement package to the City of Campbell in January 2018, which the city approved following review and corrections on June 12, 2018.

Building Plan Check

Upon completion of the construction/engineering drawings, FEF submitted the initial building permit application on October 30, 2018. Following review and corrections with the various building departments at the City of Campbell, FEF received the final clearances and the building permit on August 26, 2019.

Figure 5: Approved Building Plans



FEFUEL

HYDROGEN FUELING STATION

HAMILTON MARKET PLACE
337 E. HAMILTON AVE.
CAMPBELL, CA 95008

337 E HAMILTON AV
BLD2018-01479
412-10-046

**ADD HYDROGEN EQUIPMENT
CONTAINER, DISPENSER & CANOPY;
REPLACE EXISTING GAS DISPENSER
WITH H2 DISPENSER; ADD NEW PAD
MOUNTED TRANSFORMER; ADD NEW
TRASH ENCLOSURE; RELOCATE (E)
PROPANE TANK & ENCLOSURE; RE-
STRIPE PARKING FOR ADA COMPLIANCE;
RECONFIGURE (2) DRIVEWAYS
(7/19 RESUBMITTAL)**

**INSTALLATION OF
HYDROGEN FUELING STATION**

LOCATION
HAMILTON MARKET PLACE
337 E. Hamilton Ave., Campbell, CA 95008

PROJECT INFORMATION

PROJECT DESCRIPTION
THE PROJECT WAS PREVIOUSLY APPROVED BY PLANNING COMMISSION ON JUNE 12, 2018. THE NEW PROPOSED SCOPE OF WORK NOW PHASES THE PROJECT.

PHASE 1: NEW HYDROGEN STATION WITH 2 DOUBLE-SIDED DISPENSERS AND ANCLARITY HYDROGEN ABOVE GROUND EQUIPMENT. ONE NEW H2 DISPENSER WILL BE ADDED AND ONE EXISTING GAS DISPENSER WILL BE REPLACED WITH A H2 DISPENSER. THE LOT LINE ADJUSTMENT WILL BE RECORDED. WESTERLY DRIVEWAY ALONG HAMILTON AND EASTERLY DRIVEWAY ALONG CENTRAL WILL BE MODIFIED TO MEET CITY STANDARDS. EXISTING UTILITIES ARE UPGRADED.

PHASE 2: THE EXISTING 1,653 S.F. SERVICE BAYS STATION IS REMODELED TO CONVERT INTO A CONVENIENCE STORE. ALL PRIOR PUBLIC WORKS CONDITIONS NOT INCLUDED IN PHASE 1 WILL BE INCLUDED IN PHASE 2.

PHASE 1 AND PHASE 2 WILL CONSIST OF INDEPENDENT PROJECTS. PERMITS AND INSPECTION SIGN-OFFS.

PROJECT ADDRESS: 337 E. HAMILTON AVE., CAMPBELL, CA 95008

PROJECT COORDINATES: 37.284876N, 121.943917W

ASSESSOR PARCEL NUMBER: 2286.001-031

LOT AREA: 20,014 SF

BUILDING AREA: EXISTING BUILDING (1,653 SF)

ZONE: C2 - GENERAL COMMERCIAL

REFER TO ARCHITECTURAL SHEET Z-1 FOR ADDITIONAL PROJECT SITE INFORMATION

APPLICABLE CODES:
2016 CALIFORNIA BUILDING CODE
2016 CALIFORNIA MECHANICAL CODE
2016 CALIFORNIA PLUMBING CODE
2016 CALIFORNIA ELECTRICAL CODE
2016 CALIFORNIA GREEN BUILDING STANDARDS CODE
2016 CALIFORNIA ENERGY EFFICIENCY STANDARDS
2016 CALIFORNIA FIRE CODE
2016 NFPA 2 - HYDROGEN TECHNOLOGIES CODE

SOIL REPORT: PROJECT NO. 5-217-1254 DATED JULY 10, 2018 BY SALEM ENGINEERING GROUP

NOTES, PER CITY OF CAMPBELL:
THIS SPACE AND ALL WORK PROPOSED BY THE PERMIT SHALL BE IN FULL COMPLIANCE WITH CALIFORNIA ACCESS REQUIREMENTS, CBC 2016

PROJECT TEAM

OWNER: MIKE KHAZRI
KHAZRI2106@GMAIL.COM
337 E. HAMILTON AVE.
CAMPBELL, CA 95008

APPLICANT: FIRSTELEMENT FUEL, INC.
5151 CALIFORNIA AVE. #200
IRVINE, CA 92617
CONTACT: SHANE STEPHENS, TEL: 949-295-6553

APPLICANT AGENT/ DEVELOPMENT SERVICES: I&O CONSULTING
URS, PO BOX 112-280
165 MAY 50, #104
STATELINE, NJ 08848
CONTACT: ROBERT KANDEL, TEL: 310-946-9552

ARCHITECT: CHOO ARCHITECTS
2162 BUSINESS CENTER DR. STE 130
IRVINE, CA 92612
CONTACT: ANNE CHOO, AIA, CID, LEED AP, TEL: 925-324-6821

STRUCTURAL ENGINEER: SOE CONSULTING ENGINEERS
2081 BUSINESS CENTER DR. #100
CONTACT: EUGENE GORDON, Ph.D., TEL: 949-902-0915

MECHANICAL ELECTRICAL PLUMBING ENGINEER: ABSOLUTE CONSULTING ENGINEERS
3839 BIRCH
NEWPORT BEACH, CAL 92660
971-822-7755

GEO/TECHNICAL ENGINEER: SALEM ENGINEERING GROUP, INC.
11650 MISSION PARK DR. #130
RANCHO CUCAMONDA, CA 91730
TEL: 800-860-6455

FIRE PREVENTION: FMS PREVENTION GROUP
859 SAINT VINCENT
IRVINE, CA 92618
CONTACT: TODD LETTERMAN, 951-691-7893

CONTRACTOR: TBD

PLANNING DIVISION INSPECTION REQUIRED

Consult planner 3 DAYS before scheduling.

Tough Framing High Inspection

Landscaping Req'd Full App/PAW/ELD Req'd

Park Impact Fees Req'd

Planner: *Mindy* Email: *Mindy@planning.campbell.ca.gov*

NOTES BY FIRSTELEMENT FUEL:

- A. HYDROGEN EQUIPMENT IS DESIGNED TO BE FAIL SAFE. ALL HYDROGEN VALVES WILL CLOSE UPON GAS LEAK DETECTION OR FIRE DETECTION.
- B. HYDROGEN FLAME DETECTION AND HYDROGEN GAS DETECTION WILL BE SURVEILLED.
- C. HYDROGEN EQUIPMENT WILL HAVE A 1 HOUR BACKUP BATTERY OF CONTROL, INCLUDING THOSE FOR FLOW METER, FLOW AND HYDROGEN GAS DETECTION. ALL AUTOMATIC VALVES ON STORAGE TANKS WILL CLOSE UPON LOSS OF PRIMARY POWER MAINTAINING THE HYDROGEN IN THE STORAGE TANKS.
- D. SYSTEM IS MONITORED BY FEF FUEL IN CASE OF AN ALARM. FEF GAS DETECTOR OR OTHERS THE MONITORING CENTER WILL RECEIVE THE CALL AND CALL THE FIRE DEPARTMENT IF NECESSARY. THE 247 SERVICE TEAM CAN RESPOND TO EITHER THE MONITORING CENTER OR RECEIVE THE CALL AND RECORDED DATA FOR VARIOUS SYSTEM PRESSURES AND PRESSING POINTS. VARIOUS SYSTEM TEMPERATURES, VIBRO CAMERA FEED AND BY CALLING THE 247 SERVICE MANAGER AS REQUIRED.
- E. THE HYDROGEN EQUIPMENT WILL COMBINE WITH THE MONITORING CENTER PRIMARILY VIA SATELLITE OR WIRED INTERNET LINE WITH CELLULAR BACKUP. UPON LOSS OF PRIMARY OR BACKUP CONNECTION THE MONITORING CENTER IS NOTIFIED.
- F. NON-FIRE SPRAWLED HYDROGEN EQUIPMENT STEEL CONSTRUCTION WITH 1/4" STEEL EXTERIOR AND LAMINATED WITH FIBER CONCRETE BOARD WITH GULF TECTURE POLYURETHANE PANEL, 5/8" TRUCK 4X1 1/2".
- G. HYDROGEN CANOPY WILL MEET CHAPTER 22 SECTION 2203.2 AND SECTION 404 OF THE BUILDING CODE. THE CANOPY AND STEEL CONSTRUCTION WITH BASE WITH ALUMINUM OVERHANGS COVERED BY 1/4" FIBER GLASS CLADDING UNDER REQUIRED ACCUMULATION OF HYDROGEN IS COVERED BY DIFFERENT METHOD.
- H. GAS DETECTOR: THE EACH HYDROGEN DISPENSER WILL HAVE TWO GAS DETECTORS TO STOP THE FLOW OF HYDROGEN. THE AMOUNT OF HYDROGEN THAT CAN POTENTIALLY LEAK IS NOT SUFFICIENT TO ACCUMULATE UNDER A CANOPY.
- I. SLOPED CANOPIES ARE UTILIZED TO AVOID ACCUMULATION. WHERE FLAT CANOPIES ARE UTILIZED, ADDITIONAL GAS DETECTION IS INSTALLED UNDER CANOPY THAT SHEDS OFF ALL HYDROGEN VALVES.

DRAWING INDEX

T-1 TITLE SHEET & PROJECT INFORMATION

COA-1 CONDITIONS OF APPROVAL

COA-2 CONDITIONS OF APPROVAL

COA-3 CONDITIONS OF APPROVAL

G-1 BOUNDARY AND TOPOGRAPHIC SURVEY

C-2 BLUEPRINT FOR A CLEAN BAY

Z-1 EXISTING DEMOLITION SITE PLAN

Z-1A PROPOSED SITE PLAN

Z-1B SITE DETAILS

Z-2 ENLARGED PLAN & ELEVATIONS

Z-2A ENLARGED PLAN & ELEVATIONS

S-1 STRUCTURAL NOTE, LAYOUT, AND SCHEDULES

S-2 FOUNDATION DETAILS

S-21 STRUCTURAL NOTES & PLAN

S-3 FOUNDATION AND ANCHORAGE DETAILS

S-4 FUEL DISPENSER FOUNDATION DETAILS

S-5 TYPICAL STRUCTURAL DETAILS

S-6 REMOVABLE BOLLARD DETAILS

S-7 TRASH ENCLOSURE

S-8 PROPANE ENCLOSURE

INT-0 GENERAL NOTES

EL-1 SINGLE LINE DIAGRAM

E-20 ELECTRICAL SITE PLAN

E-30 ELECTRICAL GROUNDING PLAN

E-40 ELECTRICAL DETAILS

ES-1 LIGHTING TITLE 24

ES-2 LIGHTING TITLE 24

ES-3 LIGHTING TITLE 24

ES-4 LIGHTING TITLE 24

LVI-0 LOW VOLTAGE PLAN

MT-0 PIPING PLAN

PL-0 PLUMBING PLAN

FI-0 FIRE PLAN

FP-0 NFPA-2 TABLES

FP-3 SIGNAGE DETAILS

CANOPY: FE CANOPY (PAGE 1 TO 16)

REVISIONS

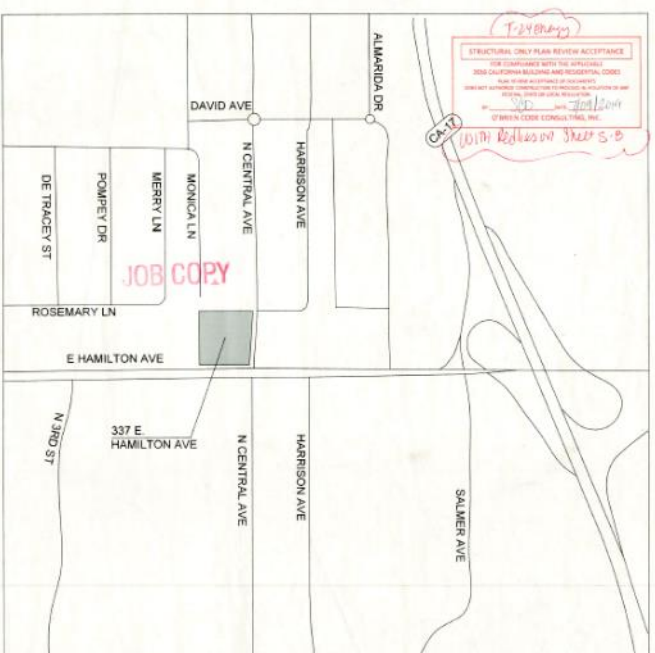
NO.	REVISION	DATE
1	REVISION	
2	REVISION	
3	REVISION	

DATE: April 8, 2019
DESIGNED BY: KD
APPROVED BY: VSG

TITLE SHEET & PROJECT INFORMATION

T-1

VICINITY MAP



City of Campbell
PLANNING DIVISION CLEARANCE

Plan Check # *2018-01479*
Approved by *[Signature]*
Date: *07-19-19*

RECEIVED
JUL 13 2019
PLANNING DIVISION OF CAMPBELL, CA

Source: FirstElement Fuel, Inc.

Site Preparation and Construction

After receiving the approval to build, FEF selected Black & Veatch, as the general contractor to perform construction work for the Campbell East Hamilton Hydrogen station.

On October 16, 2019, the construction team broke ground and started work addressing existing site conditions and relocating equipment necessary for gas station operations. Shortly thereafter, the construction team proceeded with demolition, formwork laying initial conduit connections, and pouring concrete for our equipment pads that serve as the base of our Linde compressing and FIBA storage units.

Figure 6: Breaking Ground at the Campbell East Hamilton Station



Source: FirstElement Fuel, Inc.

Equipment Installation

The equipment install occurred on November 22, 2019 with careful coordination with crane operators as well as the logistic coordinators to ensure that equipment was delivered on site and ready for install.

Figure 7: Linde Equipment Installation at the Campbell East Hamilton Station



Source: FirstElement Fuel, Inc.

On March 16, 2020, COVID-19 lockdown orders were issued as a result of the COVID-19 pandemic. The FEF team responded immediately with implementing and following the proper health and safety protocols to ensure that construction could proceed.

As a result of the COVID-19 lockdown orders, subcontractors on the job suffered from financial troubles and notified the project that they would be unable to resume work any time soon. FEF remobilized an alternate team to restart and complete construction work.

Figure 8: Tatsuno Dispenser Installation Progress at the Campbell Hamilton Station



Source: FirstElement Fuel, Inc.

Energization and Mechanical Connections

Following equipment installation, contractors completed scope to make sure that both mechanical and electrical connections were properly terminated and ready for energization.

At this point, FEF noted a slight delay for utility inspections needed to energize site. Specifically, electrical inspections resulted in a critical path delay as FEF was unable to bring power to the site until these inspections had occurred.

To proceed with the commissioning scope and to continue progress, FEF used generator power to complete the next phase. The permanent utility connection was approved on April 20, 2021.

Commissioning

On September 1, 2020, FEF started the commissioning phase where the equipment is tested to verify that the station is ready dispense hydrogen. Table 1 summarizes tasks performed to commission the station.

Table 1: Commissioning Checklist

Commissioning Tasks		FE1021- Campbell Hamilton 337 E Hamilton Ave 95008
Date: 04/29/21		
Operator: Edgard Curiel		
No.	Complete If yes check box	Tasks
1	X	Cleaning Skid
2	X	Pressure Test
3	X	Electrical Startup
4	X	Mechanical Landing
5	X	PSV Check
6	X	Calibrate Gas Detectors
7	X	Safety Function Test
8	X	Vacuum H2 Storage
9	X	Purge GH2 Storage
10	X	Vacuum LH2 Tank
11	X	Purge LH2 Tank
12	X	FillFluids
13	X	Cooldown LH2 Tank and Fill
14	X	Remove and Pump Drive
15	X	Cleaning Pump Vessel
16	X	Install Pump Insert
17	X	Install Pump Coupling
18	X	Purge pump vessel and head room
19	X	Cooldown the pump
20	X	Recalibrate Pump Level Sensor
21	X	Power on Dispenser'
22	X	Pressure Test Dispenser

Source: FirstElement Fuel, Inc.

Station Testing

The California Department of Food and Agriculture Division of Measurement Standards (DMS) is responsible for enforcement of California weights and measures laws and regulations and must certify any device used for metering the sale of commercial items within California.

Acting as a Registered Service Agent and working with the local County Weights and Measures Officer as a witness, FEF successfully completed the DMS testing on February 1, 2021 where inspection report results are summarized in Figure 9.

Figure 9: DMS Sticker (next to Emergency Stop) on Dispenser



Source: FirstElement Fuel, Inc.

Hydrogen fueling station performance validation is accomplished through the Hydrogen Station Equipment Performance (HyStEP) testing device. California Air Resources Board performed the HyStEP testing on February 12, 2021 to validate that the station is able to meet the fueling protocol standards. The OEM manufacturers reviewed the results and approved for station opening on February 26, 2021.

Operational and Open Retail

Despite completing the majority of the construction and commissioning scope, FEF experienced a delay in achieving the open retail status pending energization of the site.

The California Fuel Cell Partnership Station Operational Status System (SOSS) provides regularly updated station status information to FCEV drivers. FEF developed software to serve updates to SOSS about the amount of hydrogen available at the Campbell East Hamilton station. The Campbell East Hamilton station began sending regular status updates to SOSS on May 24, 2021.

Figure 10: SOSS – Campbell East Hamilton

Campbell - East Hamilton Ave



H35* Status: **ONLINE**
H35* Inventory: 521.39 KG
H70* Status: **ONLINE**
H70* Inventory: 521.39 KG

Last Updated: Friday, 3/4/2022, 8:24 AM
*H35 = 35 MPa or 5,000 PSI
*H70 = 70 MPa or 10,000 PSI

337 East Hamilton Avenue, Campbell,
CA 95008

[View in Map](#)

Opening Hours: 24/7

Station Customer Service: (844) 878-9376

Source: California Fuel Cell Partnership

The Campbell East Hamilton station met the requirements for open retail status specified in the solicitation, GFO-15-605, on May 24, 2021.

Figure 11: Customer Fueling at the Campbell East Hamilton Station



Source: FirstElement Fuel, Inc.

CHAPTER 4:

Results

Campbell East Hamilton Hydrogen Station Open

The Campbell East Hamilton hydrogen station is the fifth liquid hydrogen station that FEF has opened which has a fueling capacity of more than 1,200 kilograms per day. This larger fueling capacity plays a pivotal role in the infrastructure needs of today, serving the greater number of FCEVs on the road. Additionally, with four fueling positions that allows three cars to fill simultaneously, FEF is able to improve the customer experience and reduce the amount of time customers have to wait for an open pump.

Figure 12: Completed Campbell East Hamilton Hydrogen Station



Source: FirstElement Fuel, Inc.

Data Collection and Energy Analysis

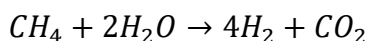
Since the first fill that occurred at the Campbell East Hamilton station on May 24, 2021, the station has dispensed just under 25,000 kg in its first year of usage and recorded over 10,259 fills. The table below summarizes the data collected during the first year.

Table 2: Data Collection During First Year

Month	KGs Dispensed	Count of Fills	Avg Kgs Dispensed
Jun-21	666.69	696	0.96
Jul-21	304.98	327	0.93
Aug-21	877.29	499	1.76
Sep-21	380.18	243	1.56
Oct-21	1,575.40	683	2.31
Nov-21	1,579.39	720	2.19
Dec-21	1,066.29	430	2.48
Jan-22	892.46	370	2.41
Feb-22	428.72	145	2.96
Mar-22	634.86	227	2.80
Apr-22	7,560.84	2,744	2.76
May-22	9,019.62	3,175	2.84
Total	24,986.70	10,259	2.44

Source: FirstElement Fuel, Inc.

The Campbell East Hamilton hydrogen refueling station is supplied by hydrogen generated via the Steam Methane Reformation that converts methane (CH₄) and water (H₂O) to hydrogen (H₂) and carbon dioxide (CO₂):



Per California Senate Bill 1505 (Lowenthal, Chapter 877, Statutes of 2006), Environmental Standards for Hydrogen Production, at least one-third of the hydrogen sold by FirstElement Fuel, Inc.'s state funded hydrogen refueling stations will be produced from renewable sources.

During the first year of operation, FEF has been able to procure environmental attributes necessary to achieve 100% renewable hydrogen for the hydrogen dispensed at the Campbell East Hamilton hydrogen refueling station. These attributes have been procured directly by FEF through a third party in order to increase the renewable supply.

Hydrogen is supplied to the hydrogen refueling stations from Air Products' hydrogen production facilities in Sacramento, CA.

Subcontractors and Budgets

Table 3 summarizes a detailed view of the budget to construct the Campbell East Hamilton hydrogen station.

Table 3: Agreement Budget – Campbell East Hamilton

Category	Agreement Reimbursable Budget	Agreement Match Budget	Total Project Budget
Compressing and Bulk Storage Equipment	\$ 1,342,779	\$ 47,025	\$ 1,389,804
Ground Storage	\$ 156,189	\$ 116,978	\$ 273,167
Dispenser	\$ 262,700	\$ 236,000	\$ 498,700
<i>Equipment</i>	\$ 1,761,668	\$ 400,002	\$ 2,161,670
<i>Materials/Misc.</i>	\$ 20,561	\$ 141,508	\$ 162,069
I&D Consulting PM	\$ -	\$ 50,999	\$ 50,999
SGE Consulting Engineers	\$ -	\$ 88,159	\$ 88,159
I&D Consulting Permitting	\$ -	\$ 30,817	\$ 30,817
Site Construction	\$ 87,771	\$ 1,699,380	\$ 1,787,151
Other	\$ -	\$ 4,500	\$ 4,500
<i>Subcontractors</i>	\$ 87,771	\$ 1,873,854	\$ 1,961,625
<i>Indirect Costs</i>	\$ -	\$ -	\$ -
Total	\$ 1,870,000	\$ 2,415,365	\$ 4,285,365

Source: FirstElement Fuel, Inc.

Statement of Future Intent

FEF intends to own and operate the refueling station at 337 East Hamilton Avenue, Campbell, CA 95008 for at least 10 years. FEF has invested capital to build the station and will require many years of operation to recoup the costs. FEF has executed an initial 10-year lease with the landowner with the possibility for extension.

In addition, FEF built a maintenance team with the personnel, equipment, and resources to maintain and repair the station as quickly as possible.

To augment onsite personnel across the FEF network, FEF has implemented a comprehensive data collection and monitoring system. FEF maintenance personal can access a breadth of real-time performance and sensor data, live video feeds, and historic usage data, and can control some features of the station remotely, 24 hours a day.

In addition to remote monitoring, FEF implemented a computerized maintenance management systems and an enterprise asset management systems to schedule and track maintenance, repairs, and inventory. These systems will generate, complete, and log work orders for all maintenance and repair activities. These systems will help maximize station up-time and enable tracking of key performance indicators.

Findings, Conclusions, and Recommendations

The following findings from the Campbell East Hamilton hydrogen station project:

- Because the Campbell East Hamilton station represents one of early stations constructed that incorporate our next generation liquid hydrogen storage, FEF learned substantially in the design, permitting, and construction phases that will carry forward in FEF’s future station builds.
- Major delays in commissioning the Campbell East Hamilton hydrogen station resulted from the delays due to the COVID-19 pandemic, the lock down orders, and utility design, inspection and install process with PG&E.

- Considerable learnings in process and procedures for decommissioning existing gas pump and replacing with hydrogen dispenser.

GLOSSARY

BATTERY ELECTRIC VEHICLE (BEV) – Also known as an “All-electric” vehicle (AEV), BEVs utilize energy that is stored in rechargeable battery packs. BEVs sustain their power through the batteries and therefore must be plugged into an external electricity source in order to recharge.

CALIFORNIA ENERGY COMMISSION (CEC) – The state agency established by the Warren-Alquist State Energy Resources Conservation and Development Act in 1974 (Public Resources Code, Sections 25000 et seq.) responsible for energy policy. The CEC's five major areas of responsibilities are:

1. Forecasting future statewide energy needs
2. Licensing power plants sufficient to meet those needs
3. Promoting energy conservation and efficiency measures
4. Developing renewable and alternative energy resources, including providing assistance to develop clean transportation fuels
5. Planning for and directing state response to energy emergencies.

CALIFORNIA FUEL CELL PARTNERSHIP (CaFCP) -- The California Fuel Cell Partnership is an industry/government collaboration aimed at expanding the market for fuel cell electric vehicles powered by hydrogen to help create a cleaner, more energy-diverse future with no-compromises to zero emission vehicles.

CARBON DIOXIDE (CO₂) - A colorless, odorless, non-poisonous gas that is a normal part of the air. Carbon dioxide is exhaled by humans and animals and is absorbed by green growing things and by the sea. CO₂ is the greenhouse gas whose concentration is being most affected directly by human activities. CO₂ also serves as the reference to compare all other greenhouse gases (see carbon dioxide equivalent). The major source of CO₂ emissions is fossil fuel combustion. CO₂ emissions are also a product of forest clearing, biomass burning, and nonenergy production processes such as cement production. Atmospheric concentrations of CO₂ have been increasing at a rate of about 0.5 percent per year and are now about 30 percent above preindustrial levels. (EPA)

DIVISION OF MEASUREMENT STANDARDS (DMS) – a Division of the California Department of Food and Agriculture whose responsibilities include Enforcement of California weights and measures laws and regulations. The Division's activities are designed to:¹

1. Ensure the accuracy of commercial weighing and measuring devices.
2. Verify the quantity of both bulk and packaged commodities.
3. Enforce the quality, advertising and labeling standards for most petroleum products.

FUEL CELL ELECTRIC VEHICLE (FCEV) – A zero-emission vehicle that runs on compressed hydrogen fed into a fuel cell "stack" that produces electricity to power the vehicle.

¹ <https://www.cdfa.ca.gov/dms/>

HYDROGEN (H₂) - A colorless, odorless, highly flammable gas, the chemical element of atomic number 1.

METHANE (CH₄) - A light hydrocarbon that is the main component of natural gas and marsh gas. It is the product of the anaerobic decomposition of organic matter, enteric fermentation in animals and is one of the greenhouse gases. Chemical formula is CH₄.

WATER (H₂O) - A colorless, transparent, odorless, tasteless liquid compound of hydrogen and oxygen. The liquid form of steam and ice. Fresh water at atmospheric pressure is used as a standard for describing the relative density of liquids, the standard for liquid capacity, and the standard for fluid flow. The melting and boiling points of water are the basis for the Celsius temperature system. Water is the only byproduct of the combination of hydrogen and oxygen and is produced during the burning of any hydrocarbon. Water is the only substance that expands on freezing as well as by heating and has a maximum density at 4°C.

