



Item 7: Information Item - Shultz Summer Fellowship

September 13, 2023 Business Meeting

Fiona Mooney, Shultz Fellow
Chair Hochschild's Office



Shultz Energy Fellowship

Fiona Mooney, Office of Chair David Hochschild

Ethan Amaya, Office of Commissioner Patty Monahan

Camden Burke, Office of Commissioner Noemí Gallardo



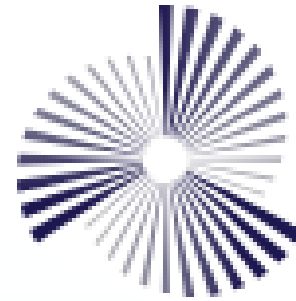
An Overview of CADEMO OSW Labor Impacts



Overview



C I E R C O



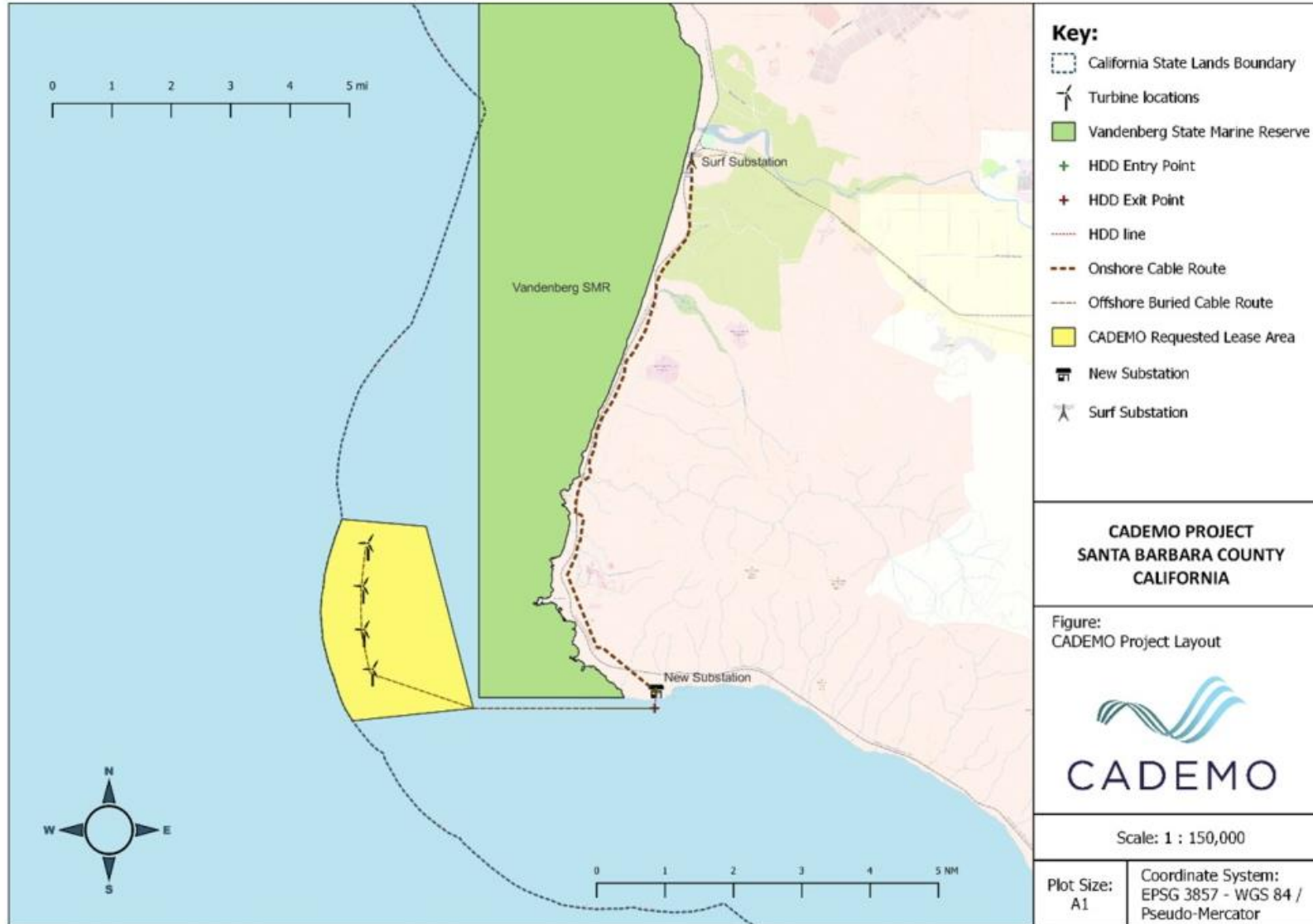
FLOVENTIS
ENERGY



OFFSHORE



Project Overview





Comparable visual: Block Island, RI



(Photo by Dennis Schroeder / NREL)



High Road Training Partnership

TRIAL RUN FOR CALIFORNIA'S OFFSHORE WIND WORKFORCE

Lessons Learned From the CADEMO High Road Training Partnership | July 5, 2023

The cover image shows a worker in a yellow safety vest and white hard hat standing on a white wind turbine tower, looking out over a vast blue ocean under a clear sky.

The bottom of the cover features a row of logos for the partner organizations: IBEW 1245, San Luis Obispo County Office of Education, SLO Partners, Cal Poly, and CADEMO.



Project Labor Agreement:

- The State Building and Construction Trades Council (signed Nov. 2022)
- IBEW 1245 (signed Nov. 2022)
- Southwest Mountain States Regional Council of Carpenters (signed May 2023)



Job Creation

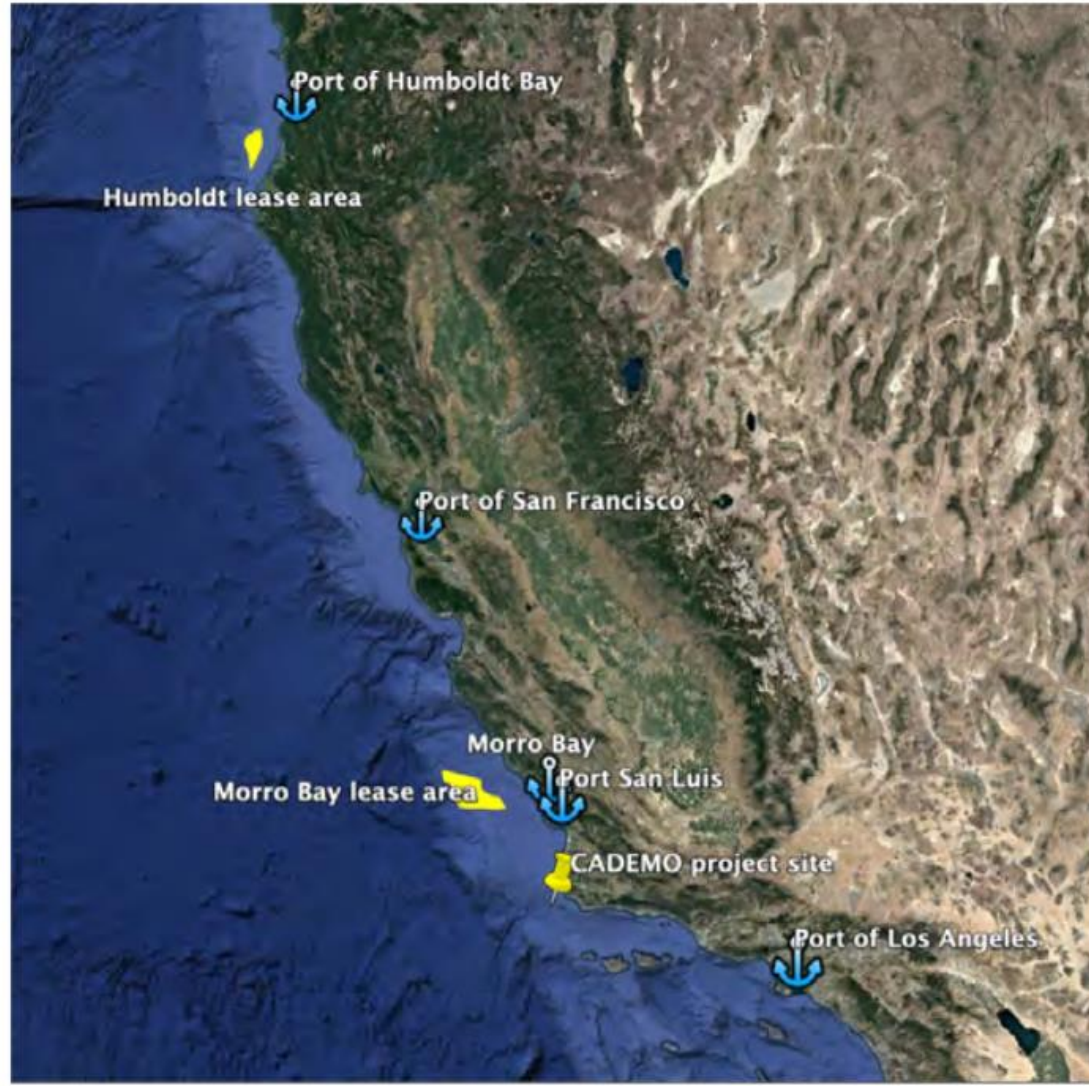
Overall Economic Impact of the CADEMO Project:

| Project Phase | Impact Categories | Jobs (FTE) | Earnings (\$ Millions) | Output (\$ Millions) | GDP (\$ Millions) |
|---------------------|-------------------|------------|------------------------|----------------------|-------------------|
| Construction | Onsite | 20 | 2.0 | 2.0 | 2.0 |
| | Supply Chain | 677 | 66.1 | 156.6 | 84.7 |
| | Induced | 225 | 13.1 | 44.7 | 27 |
| | Total | 922 | 81.2 | 203.4 | 113.7 |
| Operations (Annual) | Onsite | 4 | 0.4 | 0.4 | 0.4 |
| | Supply Chain | 12 | 1.1 | 3.9 | 1.8 |
| | Induced | 7 | 0.4 | 1.3 | 0.8 |
| | Total | 23 | 2.0 | 5.6 | 3.1 |

Source: Cal Poly



Ports



Map: Floventis



Thank you!