



Item 14: California's Fifth Climate Change Assessment Tribal Research Grant Program GFO-23-701

July 10, 2024 Business Meeting

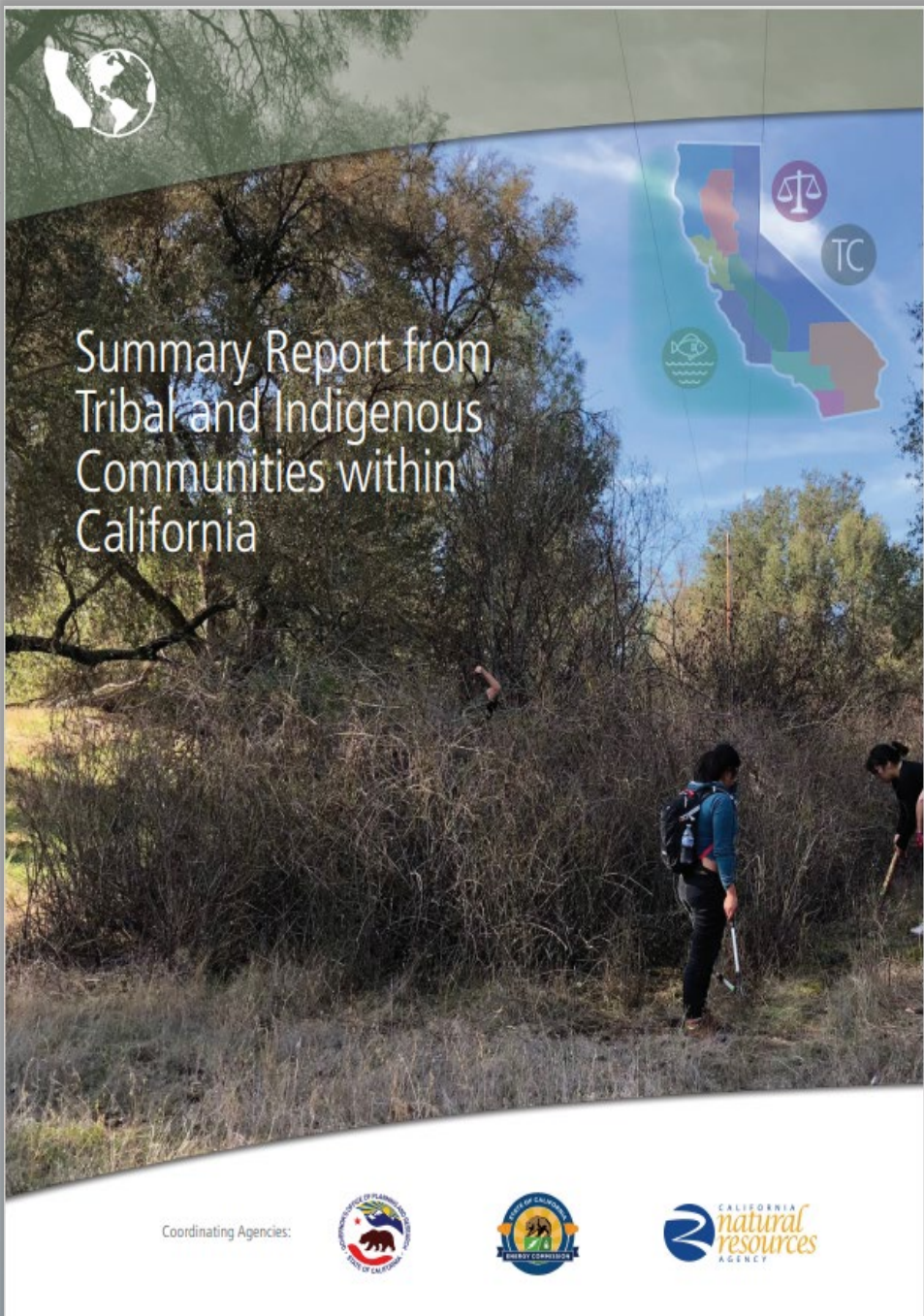
Quenby Lum, Energy Commission Specialist I
Siting, Transmission and Environmental Protection Division
Safety and Reliability Branch/Cultural Resources Unit



Benefits to Californians

California's Fifth Climate Change Assessment

- Conduct climate change adaptation research
- Coordinate state, regional and local efforts
- Report impacts and risks based on best available science
- Identify potential solutions to inform legislative policy



“... a mutual invitation between tribes and the state to share learning with an urgent focus on climate action, incorporating traditional knowledges and practices.”

– California Fourth Climate Assessment
Tribal and Indigenous Communities Report (2018), page 10



**CALIFORNIA'S FIFTH
CLIMATE CHANGE
ASSESSMENT**



Solicitation Overview

Tribal Research Grant Program

- Provides \$3.625 million to support California Native American tribes
- Supports tribal needs and priorities related to climate change
- Informs tribal synthesis, topical, and regional reports to guide climate-resilient planning



Proposed Tribal Government Awards

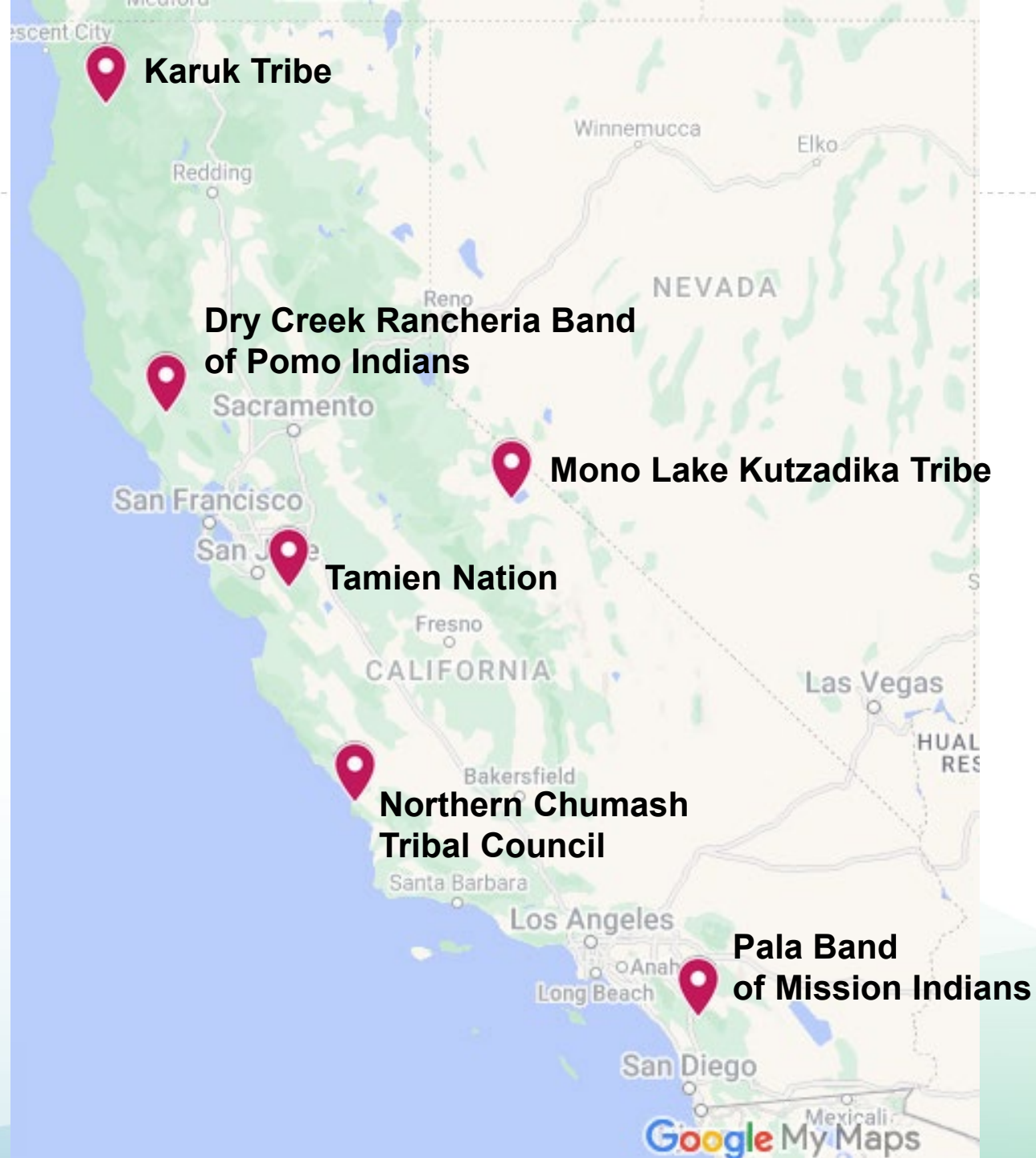


**DRY CREEK RANCHERIA
BAND OF POMO INDIANS**





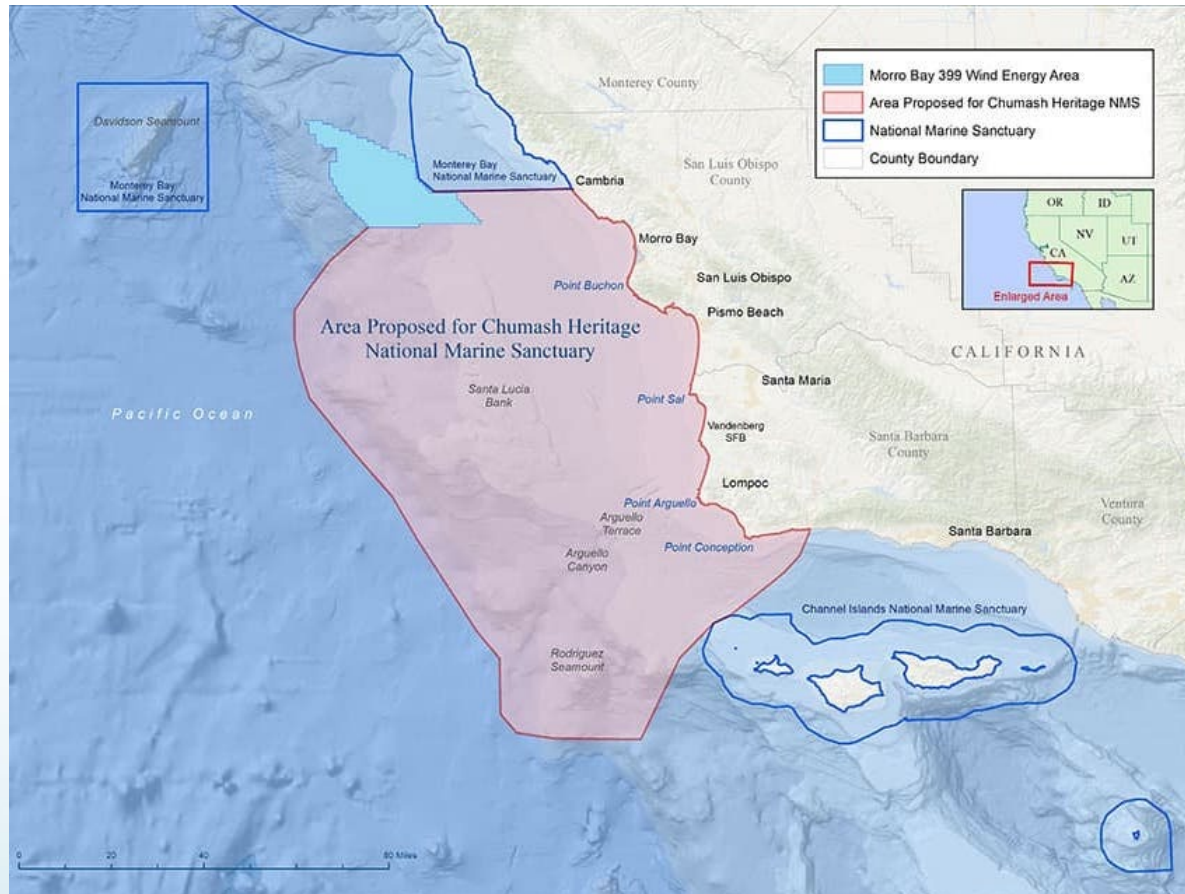
Location of proposed awards throughout California





Northern Chumash Tribal Council

Including Indigenous Knowledge in Ocean and Coastal Evidence-Based Climate Decision-Making: Relationship building, knowledge sharing, training, local community participation.



Area Proposed for Chumash Heritage National Marine Sanctuary

Source: Chumash Heritage National Marine Sanctuary



Karuk Tribe

Traditional Food Restoration: Develop native food plant nursery at existing Tishaniik Tribal Farm to support native food restoration.



Indian Potatoes

Source: National Park Service



Elderberries

Source: Native Foods Nursery



Native Blackberries

Source: Calscape/California Native Plant Society



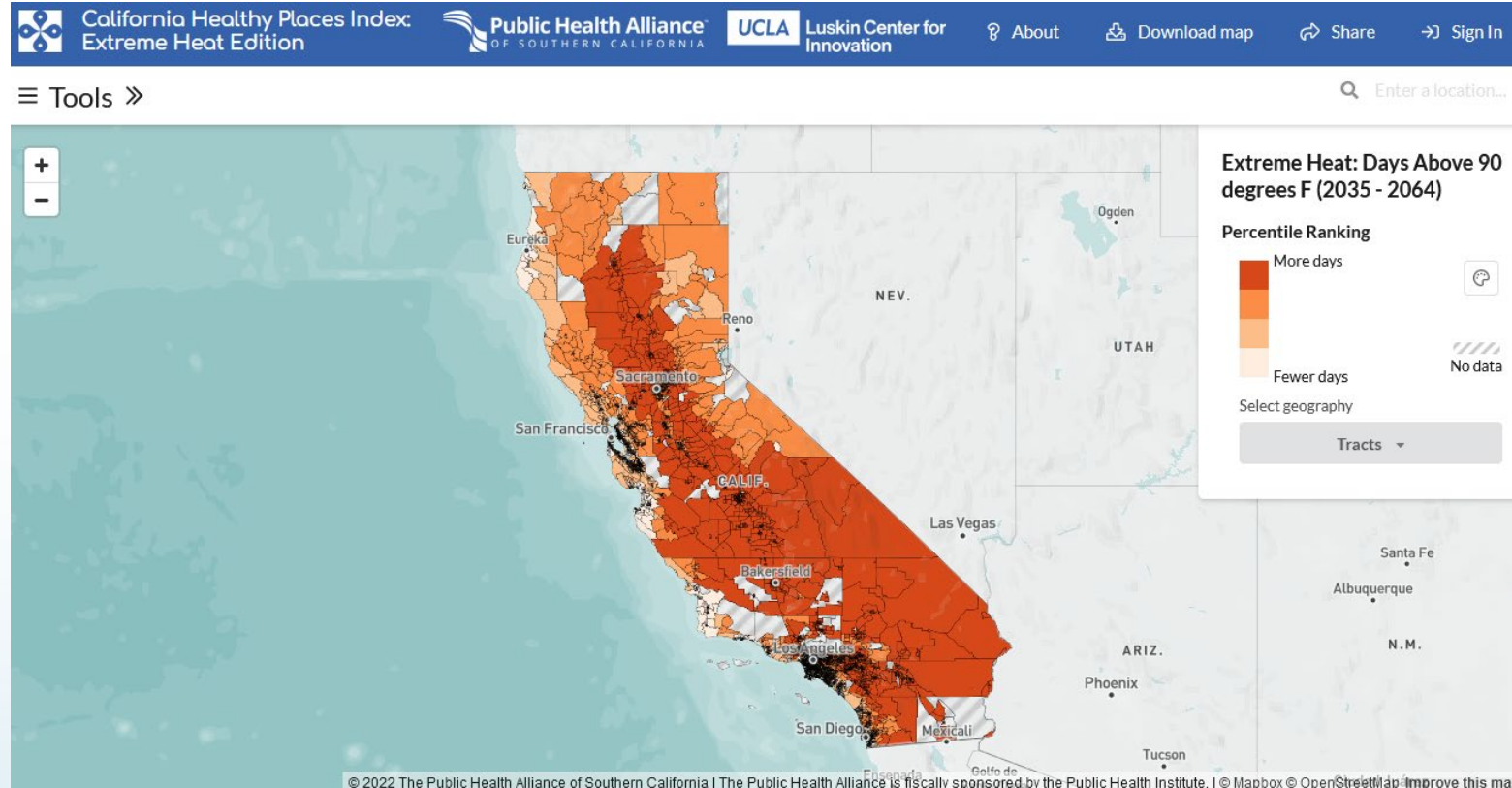
Sugar Pine

Source: Southern Oregon Land Conservancy



Pala Band of Mission Indians

Interactive Exposures, Impacts and Strategies Inventory (EISI) Tool for Extreme Heat Project (EISI for Extreme Heat): Dynamically map critical heat impacts and sensitive populations.



**California Healthy Places Index:
Extreme Heat Edition**
Source: Healthy Places Index



Mono Lake Kutzadika Indian Community Cultural Preservation Association

Pinyon Pine Traditional Stewardship Study: More focused management using both traditional stewardship and western science.



Single-Leaf Pinyon Pine

Source: Calflora/© 2012 Steven and Shellie Perry



Single-Leaf Pinyon Pine

Source: Calscape/California Native Plant Society



Single-Leaf Pinyon Pine

Source: Calflora/© 2012 Steven and Shellie Perry



Tamien Nation

Climate Resilience Grant: Increase resilience against climate change and wildfires.



**Tamien Nation
Aboriginal Territory**
Source: Tamien Nation



Staff Recommendation

- Adopt staff's determination that this action is exempt from CEQA
- Approve request to fund six tribal research grants