



Item 8: Equitable Building Decarbonization Program Direct Install - GFO-23-404

November 13, 2024 Business Meeting

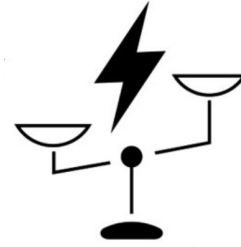
Diana Maneta
Equitable Building Decarbonization Branch
Reliability, Renewable Energy & Decarbonization Incentives Division



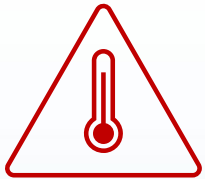
Benefits to Californians



Reduce Greenhouse Gas
Emissions from Buildings



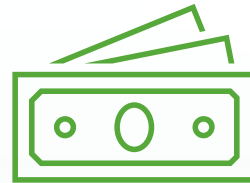
Advance Energy
Equity



Improve Resiliency
to Extreme Heat



Improve Air Quality



Improve Energy
Affordability



Support Grid
Reliability



Support Local
Workforce



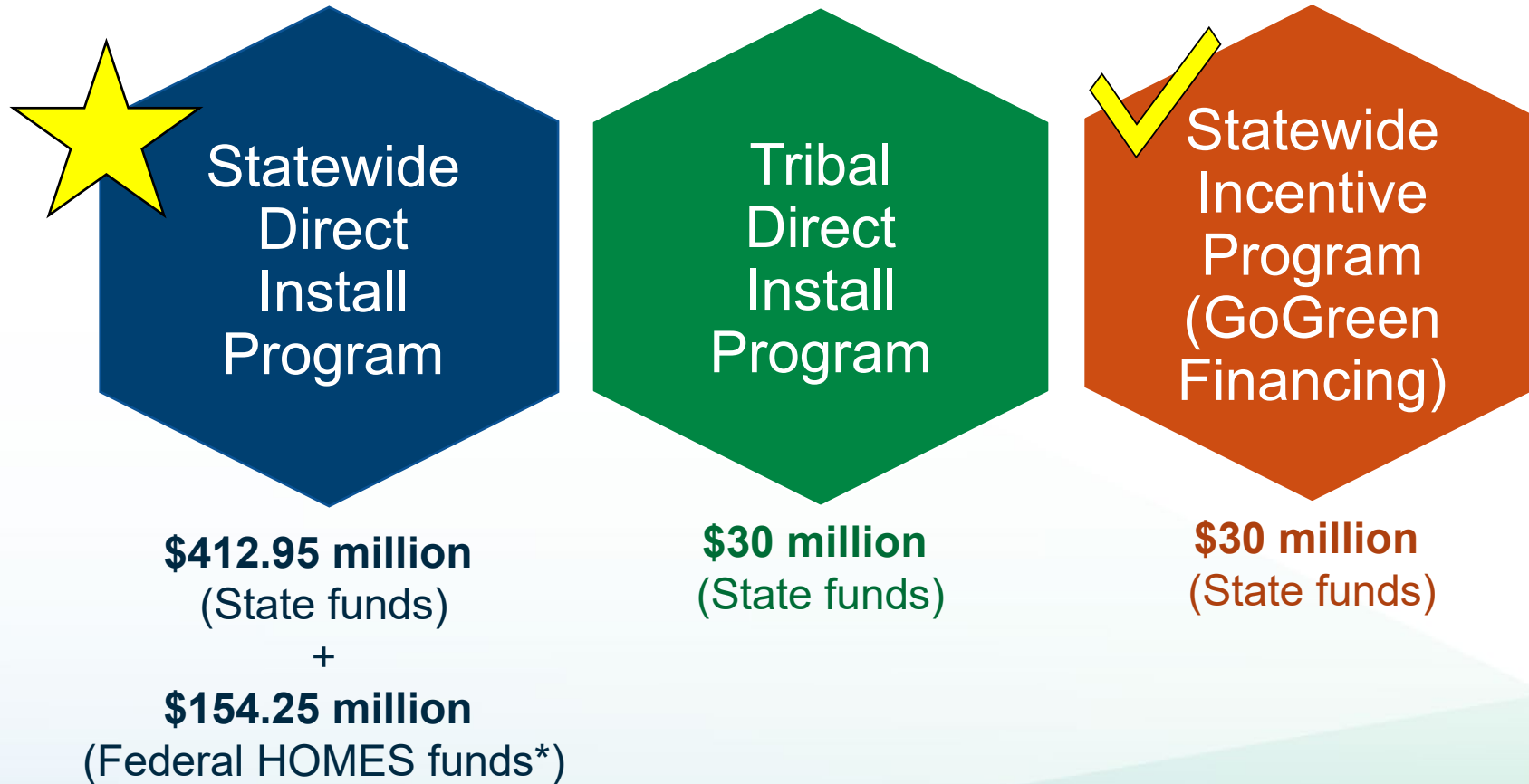
Building Decarbonization and Equity

Building decarbonization must prioritize low-income, disadvantaged, and tribal communities, who bear the highest energy burden and have suffered the most from historical environmental injustices, economic disparities, and the current climate crisis.

- Equitable Building Decarbonization Direct Install Program Guidelines



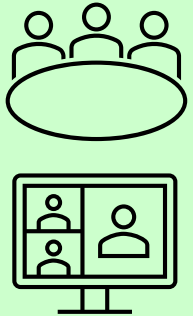
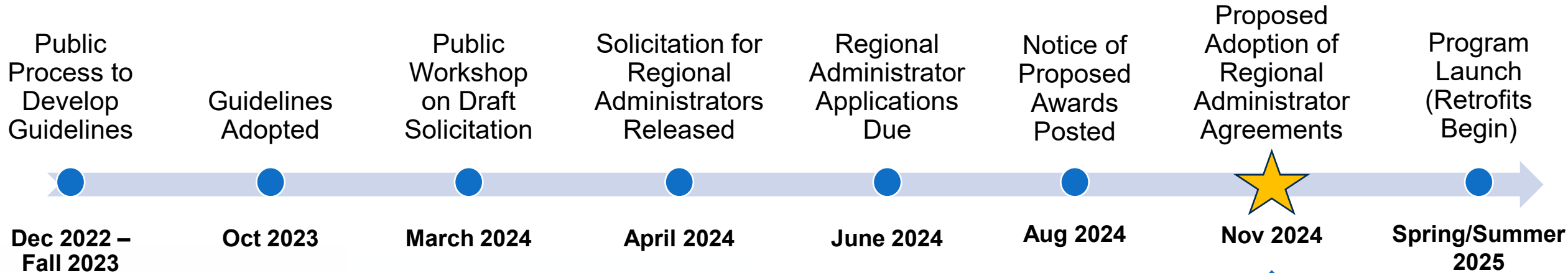
Equitable Building Decarbonization Program Subprograms



* Federal funds contingent on U.S. Department of Energy approval



Statewide Direct Install Program Timeline and Public Process



- 5 regional workshops
Fresno, Indio, Los Angeles, San Francisco, Santa Rosa
- 5 online-only workshops
- 2 tribal listening sessions


We are here!



Statewide Direct Install Program Overview

The direct install program will serve...



Low-Income Households

- Single-family
- Multifamily
- Manufactured and mobile homes



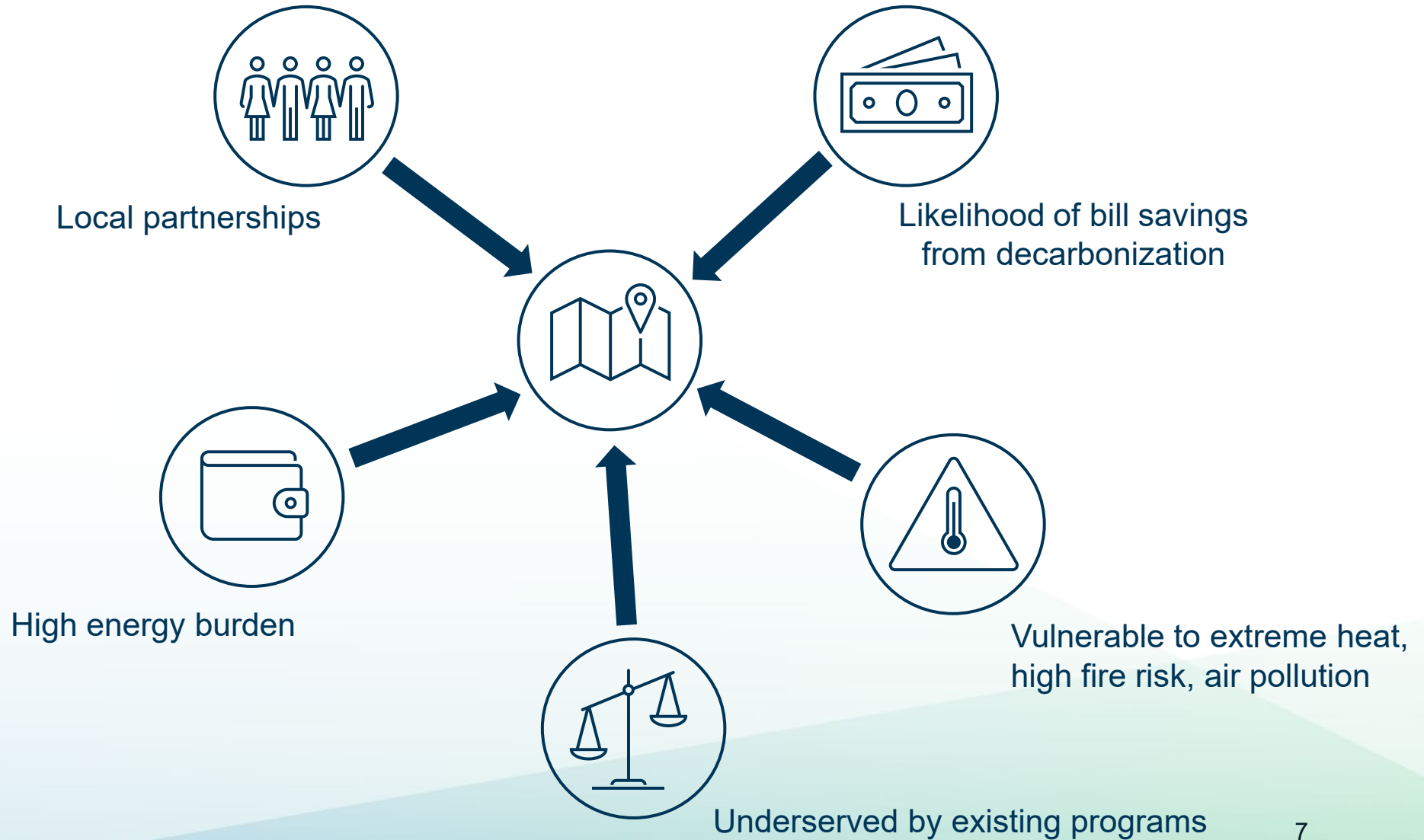
Underresourced Communities

- Disadvantaged communities
- Low-income communities

First phase of the program will serve “Initial Community Focus Areas”



Initial Community Focus Area Criteria





Eligible Measures

Heating and Cooling

- Heat pump
- Duct testing/sealing
- Smart thermostat
- Ceiling fan, whole-house fan

Building Envelope

- Insulation
- Air sealing
- Solar window film

Water Heating

- Heat pump water heater
- Low-flow showerheads and faucets

Cooking, Laundry

- Induction range or cooktop
- Electric clothes dryer

Air Quality, Lighting

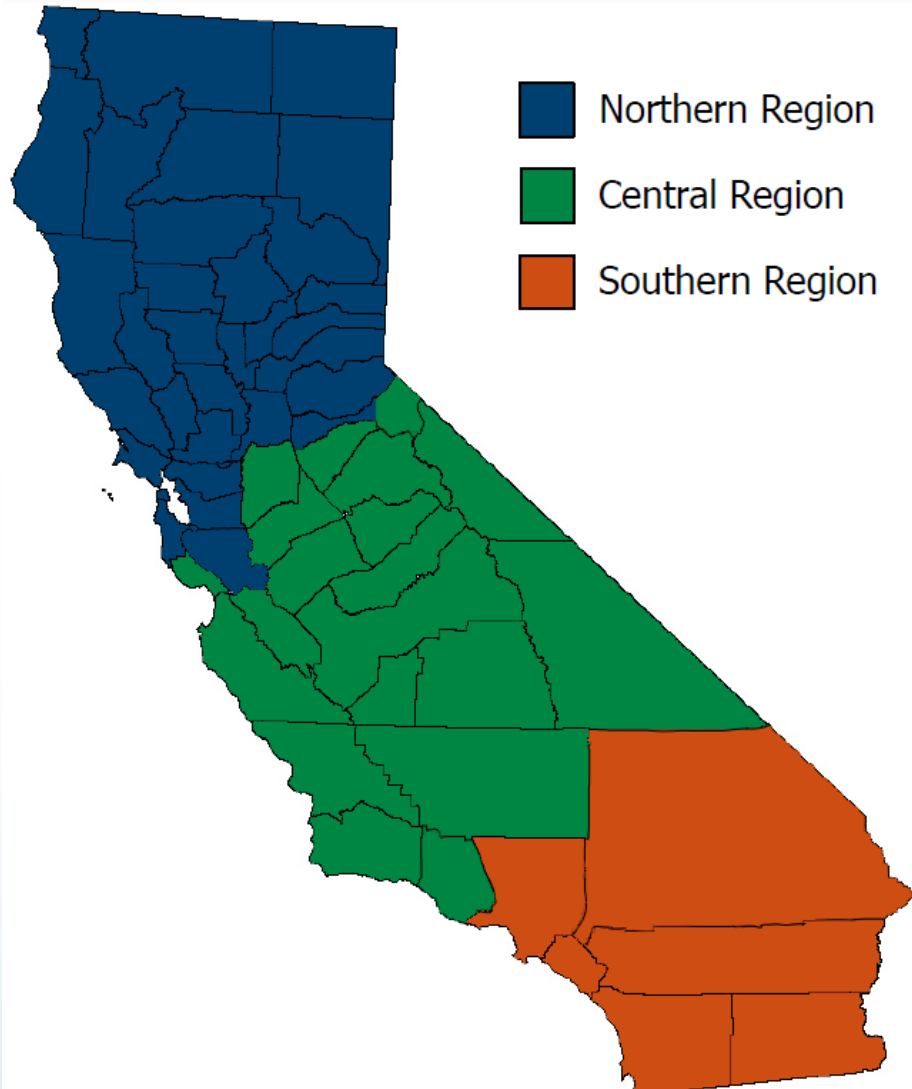
- Air filtration
- LED lights

Electrical and Remediation

- Electrical wiring and panel upgrades
- Remediation and safety



Regional Funding Allocation



Region	Population of Underresourced Communities	Percentage of Statewide Direct Install Program Funds
Northern	5.3 million	23%
Central	4.3 million	19%
Southern	13.6 million	58%
Total	23.2 million	100%



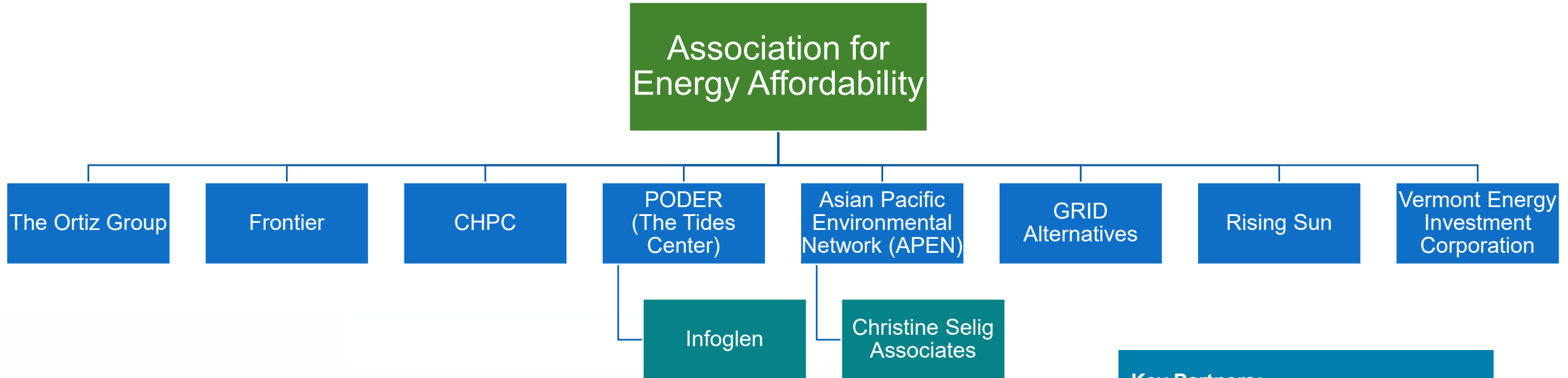
Proposed Awardees

Region	Proposed Awardee	Proposed Funding: State	Proposed Funding: Federal*	Proposed Funding: Total
North	Association for Energy Affordability, Inc.	\$94,978,500	\$35,478,190	\$130,456,690
Central	Center for Sustainable Energy	\$78,460,500	\$29,308,070	\$107,768,570
South	County of Los Angeles	\$239,511,000	\$89,466,740	\$328,977,740
Total	All Regions	\$412,950,000	\$154,253,000	\$567,203,000

** Federal funds contingent on U.S. Department of Energy approval*



Northern Region: Association for Energy Affordability, Inc.



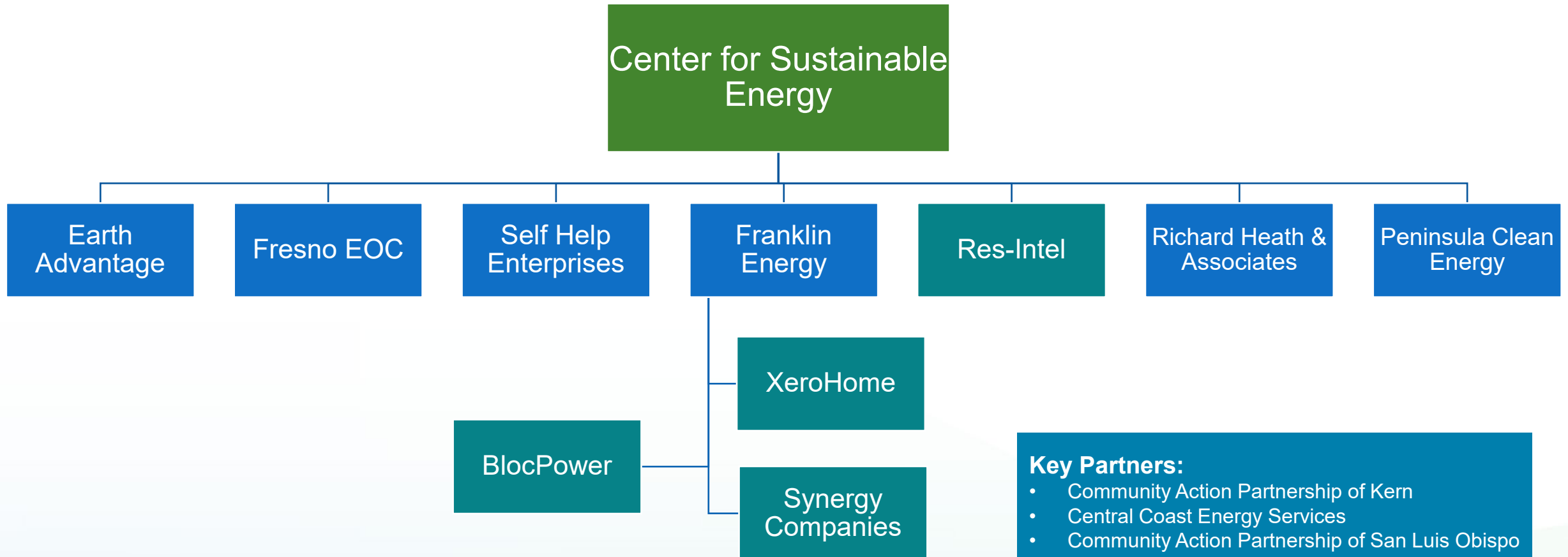
- Regional Administrator
- Subcontractors
- Vendors

Key Partners:

- Marin Clean Energy
- Peninsula Clean Energy
- Silicon Valley Clean Energy
- San Francisco Environment Department
- Bay Area Regional Energy Network
- San Jose Clean Energy
- Sacramento Municipal Utility District
- Redwood Coast Energy Authority



Central Region: Center for Sustainable Energy



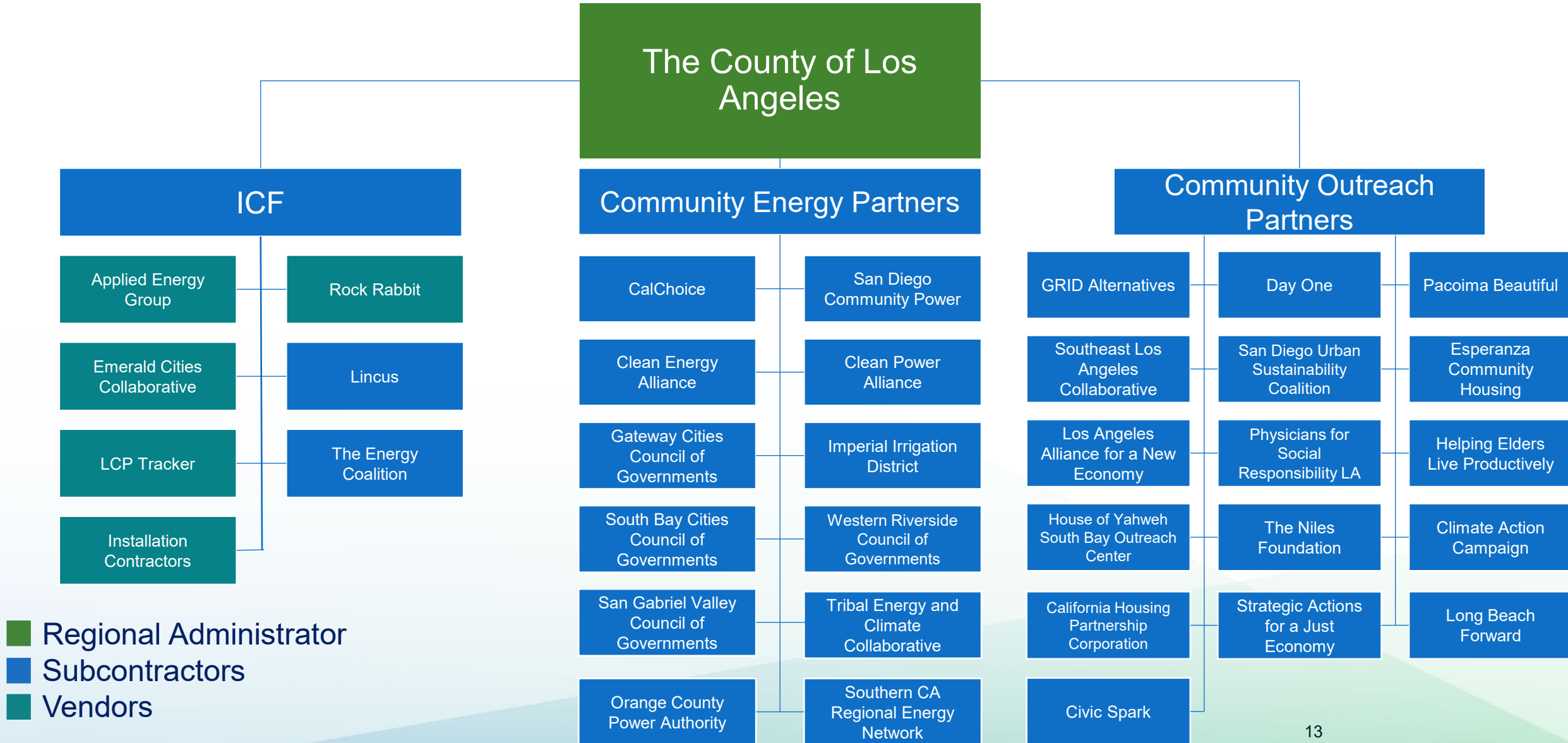
- Regional Administrator
- Subcontractors
- Vendors

Key Partners:

- Community Action Partnership of Kern
- Central Coast Energy Services
- Community Action Partnership of San Luis Obispo
- Reliable Energy Management
- Kings Community Action Organization
- Community Services & Employment Training
- Merced County Community Action Center
- Central Valley Opportunity Center

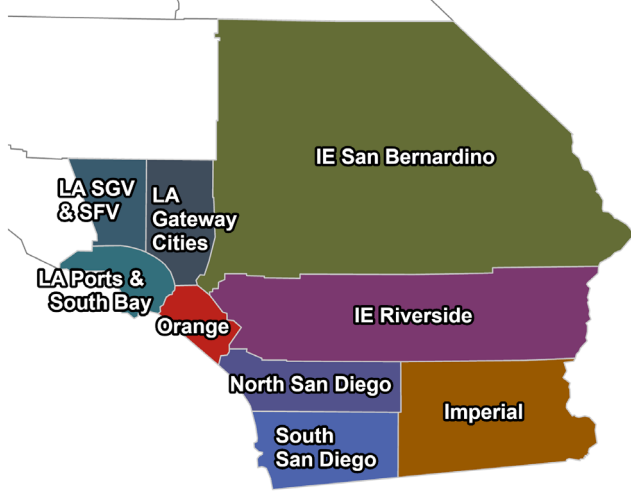


Southern Region: County of Los Angeles





Proposed Awardee, Southern Region: Los Angeles County



	South San Diego	North San Diego	Orange County	LA Ports and South Bay	LA San Gabriel and San Fernando Valley	LA Gateway Cities	Inland Empire San Bernardino	Inland Empire Riverside	Imperial County
Community Energy Partners	<ul style="list-style-type: none"> • SDCP 	<ul style="list-style-type: none"> • CEA • SDCP 	<ul style="list-style-type: none"> • OCPA 	<ul style="list-style-type: none"> • CPA 	<ul style="list-style-type: none"> • CPA 	<ul style="list-style-type: none"> • CPA 	<ul style="list-style-type: none"> • CalChoice • IREN 	<ul style="list-style-type: none"> • CalChoice • IREN 	<ul style="list-style-type: none"> • IID
Community Outreach Partners	<ul style="list-style-type: none"> • SDUSC • SCTCA • CHP • GRID • ECC • TEC 	<ul style="list-style-type: none"> • SDUSC • SCTCA • Climate Action Campaign • CHP • GRID • ECC • TEC 	<ul style="list-style-type: none"> • CHP • Climate Action Campaign • GRID • ECC • TEC 	<ul style="list-style-type: none"> • SBCOG • PSR-LA • ECH • SAJE • LAANE • SELA • Long Beach Forward • HELP • Niles Foundation • House of Yahweh • CHP • GRID • ECC • TEC 	<ul style="list-style-type: none"> • SGVCOG • PSR-LA • ECH • SAJE • Niles Foundation • Day One • Pacoima Beautiful • CHP • GRID • ECC • TEC 	<ul style="list-style-type: none"> • GCCOG • PSR-LA • ECH • SAJE • CHP • GRID • ECC • TEC 	<ul style="list-style-type: none"> • SBCOG • CHP • SCTCA • GRID • ECC • TEC 	<ul style="list-style-type: none"> • WRCOG • CHP • SCTCA • GRID • ECC • TEC 	<ul style="list-style-type: none"> • CHP • SCTCA • GRID • ECC • TEC



Staff Recommendation

- Approve the three grant agreements
 - Northern Region: Association for Energy Affordability, Inc. (EBD-24-003)
 - Central Region: Center for Sustainable Energy (EBD-24-002)
 - Southern Region: County of Los Angeles (EBD-24-004)
- Adopt staff's determination that these actions are exempt from CEQA