



# **Item 6: Electrochemistry Foundry, Inc.**

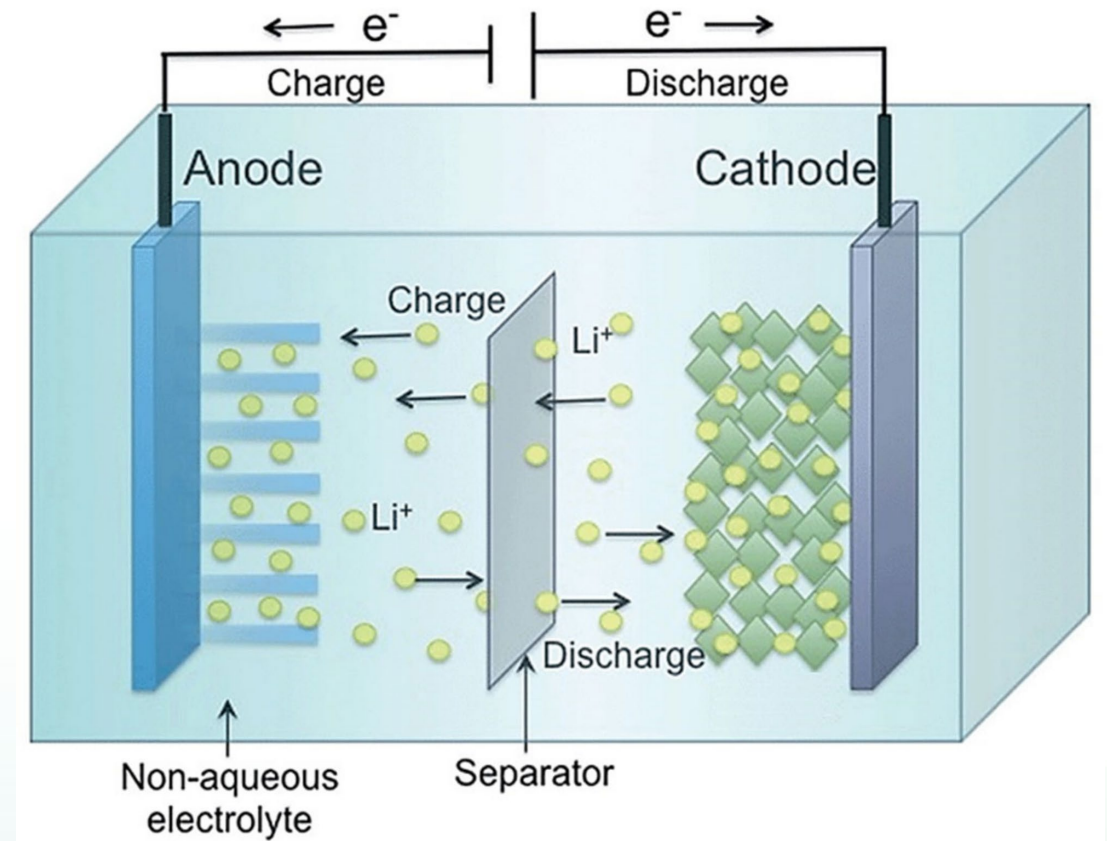
September 10, 2025 Business Meeting

Anthony Ng, Branch Manager  
Technology Innovation & Entrepreneurship Branch  
Energy Research and Development Division



# Background

- Battery innovations often occur at component level
- Customers need fully fabricated cells
- Building equipment to manufacture cells is expensive, time-consuming

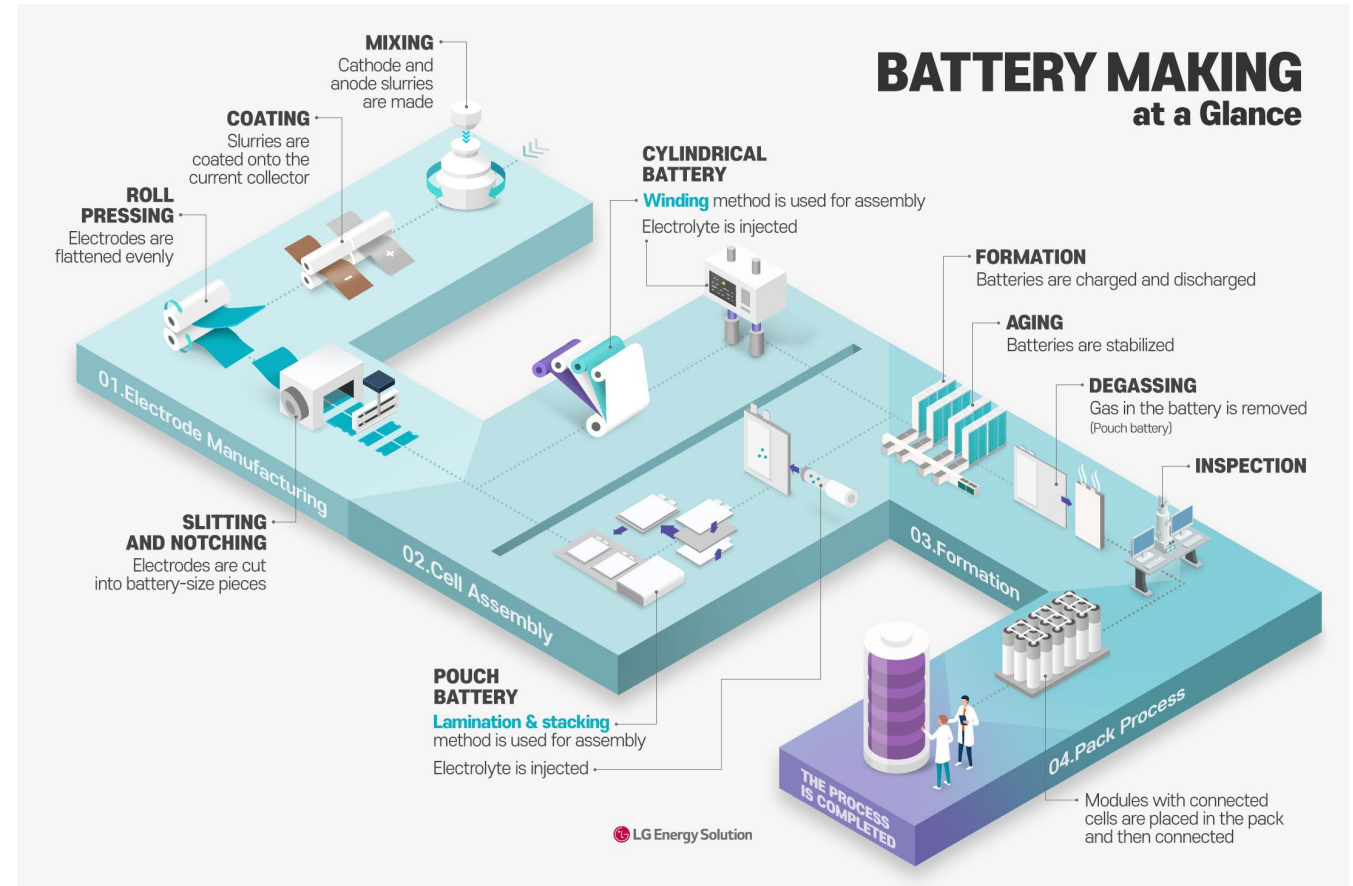


Source: [Tycorun](#)



# Solicitation Overview – GFO-24-304

- Establish a Battery Pilot Manufacturing Line – a CA Battery Hub
- Open access facility
- Full-service battery cell fabrication and testing
- Provide workforce training opportunities



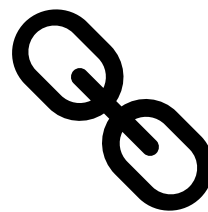
Source: LG Energy Solutions



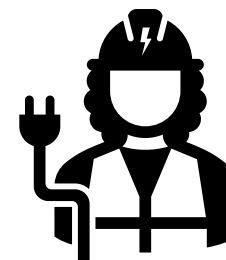
# Benefits to California



Accelerate commercialization  
of innovative battery  
technologies



Support robust battery  
supply-chain ecosystem



Support workforce development  
in battery manufacturing  
industry



- 
- The floor plan shows the following rooms and areas:
- DRY ROOM**: 4,458.04 sf
  - FORMATION TEST**: 1,666 SF
  - DRY ROOM SUPPORT & GOWN**: 510 SF
  - WET LAB**: 1800 SF
  - MACHINE/COA**: 495 SF
  - SAFETY TEST**: 490 SF
  - ANALYTICAL LAB**: 1040 SF
  - HALLWAY**: 1050
  - ELEC. RM.**: 1750
  - PO**: 1108 (130 SF), 1110 (125 SF), 1112 (125 SF)
  - MTG PO**: 1114 (108 SF), 1116 (130 SF)
  - CONF**: 1118 (180 SF)
  - BREAK**: 1120 (200 SF)
  - GREEN OFFICE**: 1122
  - LOBBY**: 1124
  - CONF**: 1126
  - WASH. RM.**: 1128
  - RESTROOMS**: 1130 (MEN), 1132 (WOMEN)
  - SHIPPING AND RECEIVING**: 1134 (875 SF)



# Staff Recommendation

---

- Approve this grant agreement
- Adopt staff's recommendation that this project is exempt from CEQA.