



**CALIFORNIA
ENERGY COMMISSION**



**CALIFORNIA
NATURAL
RESOURCES
AGENCY**

Clean Transportation Program

FINAL PROJECT REPORT

Deployment of Electric Vehicle Supply Equipment at the University of California, Irvine

Prepared for: California Energy Commission

Prepared by: Advanced Power and Energy Program, UC Irvine

March 2023 | CEC-600-2023-008

California Energy Commission

Brendan Shaffer

Jean Grigg

Scott Samuelson

Primary Author(s)

Advanced Power and Energy Program 114

Engineering Lab Facility, Bldg. 323

Irvine, CA. 92697-3550

(949) 824-7302

[Advanced Power and Energy](https://www.apep.uci.edu/) (https://www.apep.uci.edu/)

Agreement Number: ARV-10-046

Lindsee Tanimoto

Commission Agreement Manager

Mark Wenzel

Branch Manager

**LIGHT-DUTY ELECTRIC VEHICLE INFRASTRUCTURE AND ANALYSIS
OFFICE**

Hannon Rasool

DIRECTOR

FUELS AND TRANSPORTATION

Drew Bohan

Executive Director

DISCLAIMER

This report was prepared as the result of work sponsored by the California Energy Commission (CEC). It does not necessarily represent the views of the CEC, its employees, or the State of California. The CEC, the State of California, its employees, contractors, and subcontractors make no warrant, express or implied, and assume no legal liability for the information in this report; nor does any party represent that the use of this information will not infringe upon privately owned rights. This report has not been approved or disapproved by the CEC nor has the CEC passed upon the accuracy or adequacy of the information in this report.

ACKNOWLEDGEMENTS

The Primary Authors of the report would like to acknowledge:

- Project Administrator: Jeff Wojciechowski
- Charge Harbor: Ryan Grady
- South Coast Air Quality Management District

PREFACE

Assembly Bill 118 (Núñez, Chapter 750, Statutes of 2007) created the Clean Transportation Program. The statute authorizes the California Energy Commission (CEC) to develop and deploy alternative and renewable fuels and advanced transportation technologies to help attain the state's climate change policies. Assembly Bill 8 (Perea, Chapter 401, Statutes of 2013) reauthorizes the Clean Transportation Program through January 1, 2024, and specifies that the CEC allocate up to \$20 million per year (or up to 20 percent of each fiscal year's funds) in funding for hydrogen station development until at least 100 stations are operational.

The Clean Transportation Program has an annual budget of about \$100 million and provides financial support for projects that:

- Reduce California's use and dependence on petroleum transportation fuels and increase the use of alternative and renewable fuels and advanced vehicle technologies.
- Produce sustainable alternative and renewable low-carbon fuels in California.
- Expand alternative fueling infrastructure and fueling stations.
- Improve the efficiency, performance and market viability of alternative light-, medium-, and heavy-duty vehicle technologies.
- Retrofit medium- and heavy-duty on-road and nonroad vehicle fleets to alternative technologies or fuel use.
- Expand the alternative fueling infrastructure available to existing fleets, public transit, and transportation corridors.
- Establish workforce-training programs and conduct public outreach on the benefits of alternative transportation fuels and vehicle technologies.

To be eligible for funding under the Clean Transportation Program, a project must be consistent with the CEC's annual Clean Transportation Program Investment Plan Update. The CEC issued solicitation PON-09-006 to provide funding opportunities under the Program for projects which develop the infrastructure necessary to store, distribute, and dispense electricity, E-85, Biomass-based diesel, and natural gas. To be eligible for funding under PON-09-006, the projects must also be consistent with the Energy Commission's Investment Plan, updated annually. In response to PON-09-006, the recipient submitted application #21, which was proposed for funding in the Energy Commission's Notice of Proposed Awards June 10, 2011, and the agreement was executed as ARV-10-046 on February 21, 2012.

ABSTRACT

This report describes deployment of six ChargePoint CT4000 dual port Level 2 electric vehicle charging stations to two programs operated by the Advanced Power and Energy Program at the University of California, Irvine:

- (1) A study examining the effect of variable time-of-use cost on electric vehicle charging station utilization at a campus parking lot.
- (2) Modernization of electric vehicle charging infrastructure for ZEVNET, a shared use station car program.

Keywords: Electric vehicle, Plug-in Electric Vehicle, Electric vehicle charging station, chargers, Advanced Power and Energy Program, ChargePoint, Charge Harbor

Shaffer, Brendan, Grigg, Jean, Samuelsen, Scott. Advanced Power and Energy Program, UC Irvine. 2023. *Deployment of Electric Vehicle Supply Equipment at the University of California, Irvine*. California Energy Commission. Publication Number: CEC-600-2023-008

TABLE OF CONTENTS

	Page
Acknowledgements	i
Preface.....	ii
Abstract	iii
Table of Contents.....	v
List of Figures.....	v
List of Tables	vi
Executive Summary.....	1
CHAPTER 1: Project Overview.....	3
UC Irvine Campus - Multipurpose Science and Technology Building	3
Irvine Train Station	5
CHAPTER 2: Data Collection and Analysis	8
CHAPTER 3: Results	11
Results.....	11
Challenges.....	11
MSTB Installation	11
Irvine Train Station Installation.....	11
Benefits	12
CHAPTER 4: Conclusions	13
Glossary	14
APPENDIX A: Charging Session Data.....	A-1
APPENDIX B: ChargePoint CT 400 Specifications.....	B-1

LIST OF FIGURES

	Page
Figure 1: MSTB Site Before EVSE Installation	3
Figure 2: MSTB Site EVSE Installation Plans.....	4
Figure 3: MSTB Site Post EVSE Installation	5
Figure 4: Irvine Train Station Single Port Inductive Charging Stations	6
Figure 5: Irvine Train Station Site Post-Installation of Dual-Port Level 2 Chargers	7
Figure 6: GHG and Gasoline Savings Calculations.....	8
Figure 7: MTSB Installation Peak Daily Occupancy	9

Figure 8: Irvine Train Station Installation Peak Daily Occupancy 10

LIST OF TABLES

	Page
Table 1: EVSE Data and Calculated GHG and Gasoline Savings	8
Table 2: Summarized Data and Calculated GHG and Gasoline Savings.....	11

EXECUTIVE SUMMARY

ChargePoint Level 2 CT4000 dual-port electric vehicle charging stations were deployed at two separate program sites.

On the University of California, Irvine campus, three dual-port electric vehicle charging stations were installed in the parking lot of the Multipurpose Science and Technology Building, providing charging for up to six plug-in electric vehicles. The stations expand the campus's electric vehicle charging infrastructure in support of the growing population of electric vehicle drivers and provide a venue to study the effects of variable rate charging. Usage was tracked from January through June 2015. Initially, usage of the installation was limited, likely due to the availability of \$0 cost charging at another location on campus. A new pricing schedule was introduced on February 24, 2015, which included \$0 cost charging during off-peak hours-- electric vehicle charging station usage increased significantly following this pricing alteration. Usage patterns indicate there is not much appetite to pay for charging when a \$0 cost option is available--more than 70 percent of charging sessions were completed during \$0 cost off-peak hours, and 86 percent of sessions incurred less than \$1.00 in charging costs even if this requires the user to move the vehicle by a specific time to avoid charges.

At the Irvine Train Station, the deployment of the dual-port electric vehicle charging station expanded the usable charging infrastructure supporting the Zero Emission Vehicle-Network Enabled Transportation program. This program provided zero-emission transportation to participants for the "last mile" of commute between the train station and their offices. The dual-port electric vehicle charging station replaced five older inductive charging stations that were not compliant for use with current-generation plug-in electric vehicles. This modernized the station's charging infrastructure and expanded the total number current-generation ports from four to ten-- enough, to fully service the Zero Emissions Vehicle Network Enabled Transportation fleet's ten Toyota Scion iQ EVs. This eliminated the need for Zero Emissions Vehicle Network Enabled Transportation personnel to visit the site nightly to reposition vehicles and ensure all cars were able to fully charge for use the next day.

Table 2 in Chapter 3 show the results of the data collected from January to June 2015 and shows the calculated greenhouse gas reductions and gas savings resulting at each site. Note that during the data collection period, only two of the electric vehicle charging stations (four ports total) at the Irvine Train station were active, due to a dispute between the city and a Station tenant over the placement of the third unit.

CHAPTER 1:

Project Overview

Six ChargePoint electric vehicle charging stations (EVCS) were deployed at two separate program sites:

UC Irvine Campus - Multipurpose Science and Technology Building

Three ChargePoint Level 2 CT4000 charging stations were installed in the parking lot of the Multi-purpose Science and Technology Building (MSTB) on the UC Irvine (UCI) campus. These are dual-port units--each can accommodate two electric vehicles charging at once. Each charge port has a maximum capacity of 7.2 kW. In total, the units provide charging accessibility for six plug-in electric vehicles. A photo of the MSTB site before the electric vehicle supply equipment (EVSE) installation is shown in Figure 1 and the plans for the site are shown in Figure 2. The MSTB site post installation is shown in Figure 3. The objectives for this installation are:

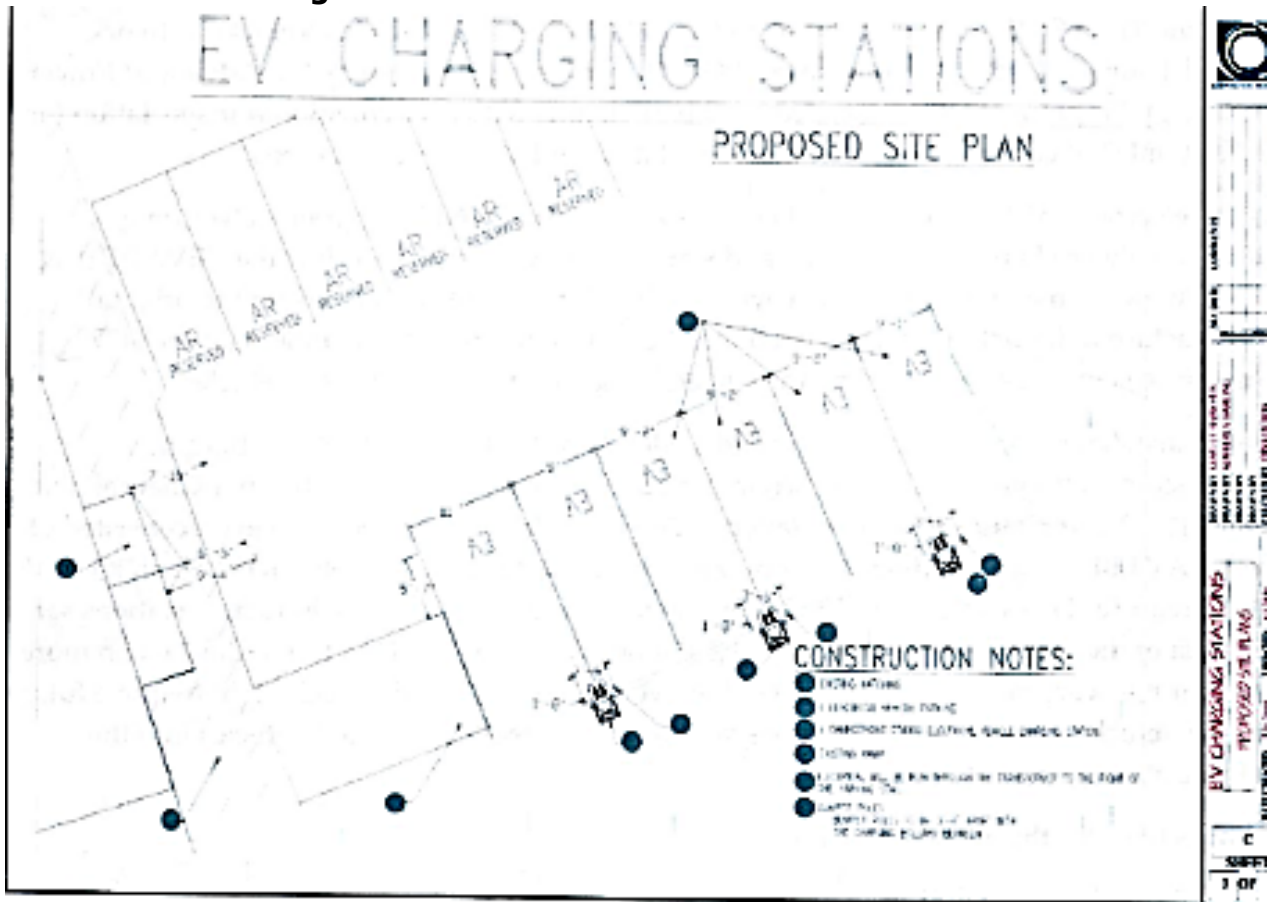
- To expand the availability of electric vehicle charging on campus
- To study the effect of variable time-of-use pricing on EVCS usage

Figure 1: MSTB Site Before EVSE Installation



Source: UC Irvine

Figure 2: MSTB Site EVSE Installation Plans



Source: UC Irvine

Figure 3: MSTB Site Post EVSE Installation



Source: UC Irvine

Irvine Train Station

The Irvine Train Station has been home to the ZEVNET (Zero Emissions Vehicle Network Enabled Transportation) program since 2003. The program, operated by the Advanced Power and Energy Program at UC Irvine, provides participants with zero-emission transportation for the "last mile" of commute between the train station and their office locations.

Battery electric vehicles have always been utilized in the ZEVNET program. Over time, however, vehicle charging technology and standards have changed. While the ZEVNET fleet still maintains some first-generation Toyota RAV4 EVs that are charged using the original infrastructure of inductive charging stations, these stations are incompatible with the J1772 compliance standards employed by the current generation plug-in electric vehicles.

Before in the installation of equipment provided under ARV 10-046, the ZEVNET charging infrastructure consisted of 12 of the original inductive charging stations and four ChargePoint Level 2 J1772-compliant single port stations. The ZEVNET vehicle fleet, however, consisted of seven RAV4 battery electric vehicles (which utilize the inductive charging stations) and ten Toyota IQ battery electric vehicles (which require J1772-compliant EVCS to charge). As a result, five of the inductive stations sat idle most of the time, while the four Level 2 stations were overburdened. On days when more than fossil fuels were in use, program personnel would go to the Station each night to move

fully charged vehicles out of charging stations spaces and reposition depleted vehicles into the charging station spaces to charge.

The objectives for this installation are:

- To modernize the ZEVNET charging infrastructure by replacing obsolete/unused inductive EVCS with EVCS that meet current-generation electric vehicle charging standards
- To provide enough charge ports to service all current generation EVs in the ZEVNET fleet
- To eliminate the need to devote ZEVNET staff resources to moving vehicles at night to ensure ZEVNET participants have fully charged vehicles available each morning.

Figure 4: Irvine Train Station Single Port Inductive Charging Stations



Source: UC Irvine

Figure 5: Irvine Train Station Site Post-Installation of Dual-Port Level 2 Chargers



Source: UC Irvine

CHAPTER 2:

Data Collection and Analysis

Data were collected during the six-month period from January through June 2015 at both the MSTB and the Irvine Train Station locations. Table 1 summarizes the data collected and the calculated GHG¹ and gasoline savings. The calculations for the data collected are shown in Figure 6.

Table 1: EVSE Data and Calculated GHG and Gasoline Savings

	UCI	Irvine Train Station
Max Capacity [kW]	7.2 x 6	7.2 x 4
Total kWh	3,677	946
Total Revenue	\$238.80	0
% of \$0 cost sessions	71%	100%
# of Sessions	395	290
GHG Savings [kg]	1544	397
Gasoline Savings [gal]	461	119

Source: Advanced Power and Energy Program, UC Irvine

Figure 6: GHG and Gasoline Savings Calculations

$$\begin{aligned}
 \text{GHG Savings} &= \text{Total kWh} * 2.9 \frac{\text{miles}}{\text{kWh}} * (0.4 \text{ kg} \frac{\text{CO2e}}{\text{mile}} - 0.21 \text{ kg} \frac{\text{CO2e}}{\text{mile}}) \\
 \text{Gasoline Savings} &= \text{Total kWh} * 2.9 \frac{\text{miles}}{\text{kWh}} * \frac{1 \text{ gal}}{25 \text{ mile}}
 \end{aligned}$$

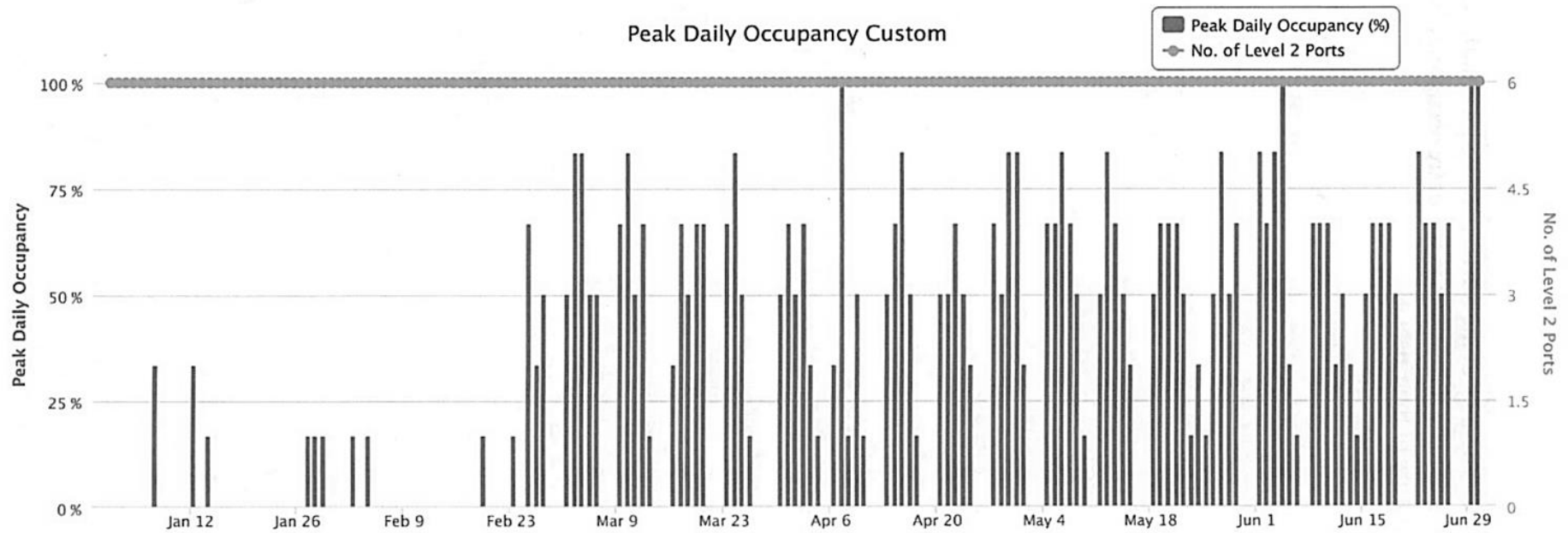
Source: Advanced Power and Energy Program, UC Irvine

Figure 7 and Figure 8 show the peak daily occupancy at the MSTB parking lot and the Irvine Train Station EVCS installations respectively. The differences in the daily occupancy between the two sites in part reflect the different nature of their usage.

¹ [Source for carbon emissions](http://www.apep.uci.edu/3/ResearchSummaries/pdf/SustainableTransportation/WTW_vehicle_greenhouse_gases_Public.pdf)

http://www.apep.uci.edu/3/ResearchSummaries/pdf/SustainableTransportation/WTW_vehicle_greenhouse_gases_Public.pdf

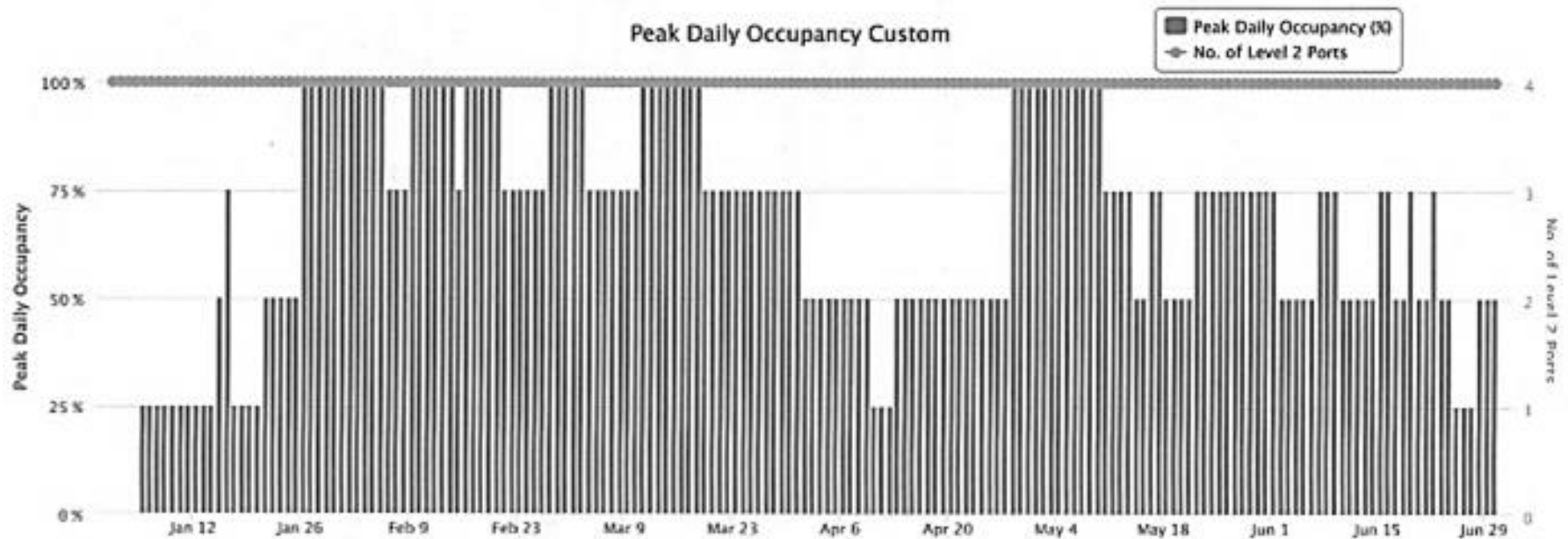
Figure 7: MTSB Installation Peak Daily Occupancy



Source: Advanced Power and Energy Program, UC Irvine

The MSTB installation is utilized by the general campus population/campus visitors. The price to charge a vehicle at this site varies based on time-of-use: Initially, on-peak (Noon-6 pm) pricing was \$2.50/hr and off peak (all other hours) pricing was \$1.50/hr. Under this pricing method, the MSTB EVCS experienced very limited usage, likely due to the availability of 20 EVCS offering \$0 cost charging in a parking structure in another part of the UCI campus (part of the Irvine Smart Grid Demonstration project). In order to encourage increased usage at the MSTB EVCS, a new pricing schedule was introduced on February 24, 2015; On peak (Noon-6pm) \$1.50/hr and off peak (all other hours) \$0/hr. As shown in Figure 8, usage of the MSTB EVCS increased significantly following this pricing alteration. It should be noted, however, that 71 percent of all charging sessions were completed during the \$0 cost off-peak hours, and 86 percent of completed sessions incurred charges of \$0 or less than \$1, indicating there is not much appetite for paying to charge if a \$0 cost option is available.

Figure 8: Irvine Train Station Installation Peak Daily Occupancy



Source: Advanced Power and Energy Program, UC Irvine

At the Irvine Train Station, there is no session fee billed to ZEVNET participants for use of the EVCS. The cost of vehicle charging is included in the annual ZEVNET program membership fee.

Participants are instructed to plug in the vehicles every night at the Train Station, so they will be fully charged and ready for use the next morning. The data in Figure 7 only reflects usage of the ChargePoint CT4000 dual port Level 2 charging stations installed under the ARV 10-046 contract. It does not include usage of the single port Level 2 charging stations that were previously installed on the site. Note that during the January- June 2015 data collection period, only two of the EVCS (four ports total) were active, due to a dispute between the city and a Train Station complex tenant over placement of the third unit. The number of active ZEVNET vehicles capable of utilizing the Level 2 charge ports varied between four and six during this period. The Peak Daily Occupancy was not always 100 percent, because (1) not all vehicles were in service every day and thus did not need to be charged every day, and (2) some vehicles may have used the single port Level 2 stations to charge.

CHAPTER 3:

Results

Results

Advanced Power and Energy Program has completed the installation of six ChargePoint CT4000 dual port EVCS-three in the MSTB building parking lot on the UCI campus, and three at the Irvine Train Station. All the EVCS are operational, servicing the campus community and ZEVNET program participants respectively. Table 2 below summarizes the calculated GHG and gasoline savings from the six installations.

Table 2: Summarized Data and Calculated GHG and Gasoline Savings

	UCI	Irvine Train Station
Max Capacity [kW]	7.2 x 6	7.2 x 4
Total kWh	3,677	946
Total Revenue	\$238.80	0
% of \$0 cost sessions	71%	100%
Sessions	395	290
GHG Savings [kg]	1544	397
Gasoline Savings [gal]	461	119

Source: Advanced Power and Energy Program, UC Irvine

Challenges

MSTB Installation

Electrical access at the site initially planned for the MSTB EVCS was determined to be too complex and costly, so an alternative site was scouted and approved.

Utilization of the installed MSTB EVCS with their variable time-of-use charging rates was initially impacted by the availability of \$0 cost electric vehicle charging at another parking location on campus. This led to a revision in the pricing structure implemented in February 2015.

Irvine Train Station Installation

The Irvine Train Station installation encountered difficulty concerning whether or not Americans with Disabilities Act (ADA) compliance would be required by the City of Irvine. Initially, the city advised ADA compliance did not apply to the project. When the construction permit was requested, however, it was determined ADA compliance was required. Installation was delayed first by appeals, then by finalizing plans on how best to meet the City's ADA requirements.

Initially, two EVSE were deployed to the ZEVNET-designated area of the Station parking lot, and a third unit was installed in the Station's parking structure to comply with City

ADA handicapped accessibility requirements. Placement of the unit in the parking structure, however, was disputed by a Station complex tenant, saying that implementation of the ADA- required changes would negatively impact his business. The city eventually reversed their position, determining ADA compliance did not apply to the ZEVNET program, and the unit was removed from the parking structure.

Ultimately, the third unit was installed in the ZEVNET-designated area of the Station parking lot in July of 2015. As such, the January - June 2015 Irvine Train Station results reported in this document only include data from two of the three dual port EVCS.

Benefits

The MSTB EVCS installation has expanded the campus electric vehicle charging infrastructure, enabling reduction of petroleum use and decreased GHG emissions, and aiding the campus in meeting Air Quality Management District compliance requirements. With the addition of these units, the campus now has 46 EVCS installed in four campus parking structures and two parking lots.

The MSTB site provides a test bed for exploring time-of-use vehicle charging rates. The \$0 cost charging noted earlier that is available at another location on campus will soon be replaced with fee based fixed rate charging. This will provide an opportunity to further study time-of-use based variable rates, and how usage at the MSTB location is influenced by the standard rates applied at the rest of the campus's charging stations.

The Irvine Train Station ZEVNET installation addressed the need for modernization of outdated charging equipment and expanded the program's capacity for deployment of current generation electric vehicles. This has enabled the ZEVNET program to continue to evolve and provide a solution to the "last mile" conundrum that dissuades many people from utilizing public transportation. ZEVNET participation encourages use of public transportation, reduces petroleum use and aids in the decrease of GHG emissions.

Completion of the ZEVNET installation has also eliminated the need for ZEVNET staff to devote time and resources to ensuring program vehicles are fully charged, thus enabling more efficient and cost-effective operations.

CHAPTER 4:

Conclusions

Both installations met their stated objectives. The MSTB installation expanded the availability of electric vehicle charging on campus and created a test bed for pricing studies. The Irvine Train Station installation modernized the ZEVNET charging infrastructure to service today's plug-in electric vehicles, eliminated the need for ZEVNET staff to manually intervene to ensure all vehicles were charged, and increased the useable number of charging stations to accommodate the full ZEVNET fleet charging needs.

Additionally, both installations encouraged the use of electric vehicles (and in the case of ZEVNET, public transportation), and thus the displacement of petroleum-based transportation. The successful installation of these charging stations provides increased charging capacity for clean, efficient plug-in electric vehicles.

More than 70 percent of the MSTB charging sessions were conducted during the \$0 cost off-peak hours, and 86 percent of the sessions incurred less than \$1 in charging costs. These time-of-use results indicate there is not much appetite for paying for electric vehicle charging when a source of \$0 cost charging is available (even if this means removing the vehicle from the charging station by a particular time to avoid charges).

The ADA compliance issues at the Irvine Train Station ZEVNET installation illuminated the importance of ensuring all stakeholders have been identified and included in the conversation, as well as the value of encouraging inter-departmental dialog when more than one City department is involved in a project.

GLOSSARY

AMERICANS WITH DISABILITIES ACT (ADA)—One of the most significant federal laws governing discrimination against persons with disabilities, passed in 1990. Prohibits discrimination against individuals with disabilities in employment, housing, education, and access to public services. The ADA defines a disability as any of the following: 1. "a physical or mental impairment that substantially limits one or more of the major life activities of the individual." 2. "a record of such impairment." or 3. "being regarded as having such an impairment."

ELECTRIC VEHICLE CHARGING STATION (EVCS)—An electric vehicle charging station, also called EV charging station, electric recharging point, charging point, charge point, electronic charging station (ECS), and electric vehicle supply equipment (EVSE), is an element in an infrastructure that supplies electric energy for the recharging of plug-in electric vehicles—including electric cars, neighborhood electric vehicles and plug-in hybrids.⁴¹

ELECTRIC VEHICLE SUPPLY EQUIPMENT (EVSE)—Infrastructure designed to supply power to EVs. EVSE can charge a wide variety of EVs, including BEVs and PHEVs.

GREENHOUSE GAS (GHG)—Any gas that absorbs infrared radiation in the atmosphere. Greenhouse gases include water vapor, carbon dioxide (CO₂), methane (CH₄), nitrous oxide (NO_x), halogenated fluorocarbons (HCFCs), ozone (O₃), perfluorinated carbons (PFCs), and hydrofluorocarbons (HFCs).

MULTIPURPOSE SCIENCE AND TECHNOLOGY BUILDING (MSTB)— The Multipurpose Science and Technology Building is located at UC Irvine.²

UNIVERSITY OF CALIFORNIA IRVINE (UCI)— In 1965, the University of California, Irvine was founded with a mission to catalyze the community and enhance lives through rigorous academics, cutting-edge research, and dedicated public service. Today, we draw on the unyielding spirit of our pioneering faculty, staff and students who arrived on campus with a dream to inspire change and generate new ideas. We believe that true progress is made when different perspectives come together to advance our understanding of the world around us. And we enlighten our communities and point the way to a better future. At UCI, we shine brighter.³

ZERO EMISSION VEHICLE NETWORK ENABLED TRANSPORT (ZEVNET)—ZEV·NET was a research program designed to provide convenient environmentally sensitive transportation alternatives to commuters for traveling to work, daytime meetings and appointments. The acronym "ZEV·NET" stands for Zero Emission Vehicle Network Enabled Transport and

² [Multipurpose Science & Technology Building – Classroom Technologies \(uci.edu\)](https://classrooms.uci.edu/classrooms/mstb/?msclid=ee3acec6d15b11ec9f27752fd1234876)
<https://classrooms.uci.edu/classrooms/mstb/?msclid=ee3acec6d15b11ec9f27752fd1234876>

³ [About Us | UCI](https://uci.edu/about/index.php) <https://uci.edu/about/index.php>

represented the program's use of electric vehicles that were equipped with Global Positioning System (GPS) technology in conjunction with scheduling software so that the vehicles can be efficiently shared among commuters.⁴

⁴ [ZEVNET](https://www.a pep.uci.edu/ZEV_NET_Program.html) https://www.a pep.uci.edu/ZEV_NET_Program.html

APPENDIX A:

Charging Session Data

Table 3 shows the session data for the UCI-MSTB charging session.

Table 3: UCI - MSTB Charging Session Data

Station Name	Port	Start Date	End Date	Total Duration (hh:mm:ss)	Charging Time (hh:mm:ss)	Energy (kWh)	GHG Savings	Address 1	Fee
UC IRVINE/ LOT 16 MSTB 3-4	1	6/30/2015 19:36	6/30/2015 19:38	0:01:59	0:00:00	0	0	415 E Peltason Dr	0
UC IRVINE/ LOT 16 MSTB 1-2	1	6/30/2015 7:56	6/30/2015 12:53	4:56:28	3:16:36	14.7618	6.2	415 E Peltason Dr	1.33
UC IRVINE/ LOT 16 MSTB 5-6	2	6/30/2015 7:06	6/30/2015 12:13	5:07:17	3:26:00	10.8116	4.541	415 E Peltason Dr	0.35
UC IRVINE/ LOT 16 MSTB 1-2	2	6/30/2015 8:53	6/30/2015 12:05	3:12:02	2:48:12	9.95596 8	4.182	415 E Peltason Dr	0.14
UC IRVINE/ LOT 16 MSTB 3-4	1	6/30/2015 7:45	6/30/2015 1:07	3:21:19	3:03:26	13.8591 5	5.821	415 E Peltason Dr	0
UC IRVINE/ LOT 16 MSTB 3-4	2	6/30/2015 8:41	6/30/2015 11:50	3:08:29	2:14:09	7.06725 4	2.968	415 E Peltason Dr	0

Station Name	Port	Start Date	End Date	Total Duration (hh:mm:ss)	Charging Time (hh:mm:ss)	Energy (kWh)	GHG Savings	Address 1	Fee
UC IRVINE/ LOT 16 MSTB 5-6	1	6/30/2015 10:02	6/30/2015 11:46	1:43:29	1:43:15	10.4848	4.404	415 E Peltason Dr	0
UC IRVINE/ LOT 16 MSTB 5-6	1	6/29/2015 8:43	6/29/2015 2:45	4:02:40	4:02:41	18.8054 7	7.898	415 E Peltason Dr	1.15
UC IRVINE/ LOT 16 MSTB 5-6	2	6/29/2015 7:04	6/29/2015 12:30	5:26:11	3:09:15	10.5461 9	4.429	415 E Peltason Dr	0.76
UC IRVINE/ LOT 16 MSTB 3-4	1	6/29/2015 8:13	6/29/2015 10:49	2:36:03	2:07:00	7.95258 8	3.34	415 E Peltason Dr	0
UC IRVINE/ LOT 16 MSTB 3-4	2	6/29/2015 9:58	6/29/2015 12:00	2:02:21	1:51:15	11.4361 8	4.803	415 E Peltason Dr	0.02
UC IRVINE/ LOT 16 MSTB 1-2	2	6/29/2015 8:41	6/29/2015 11:52	3:11:14	2:43:35	9.84082 8	4.133	415 E Peltason Dr	0
UC IRVINE/ LOT 16 MSTB 1-2	1	6/29/2015 10:30	6/29/2015 11:51	1:21:09	1:20:49	8.45769 2	3.552	415 E Peltason Dr	0
UC IRVINE/ LOT 16 MSTB 3-4	1	6/26/2015 10:23	6/26/2015 12:00	1:36:53	1:36:39	9.93331 9	4.172	415 E Peltason Dr	0.02

Station Name	Port	Start Date	End Date	Total Duration (hh:mm:ss)	Charging Time (hh:mm:ss)	Energy (kWh)	GHG Savings	Address 1	Fee
UC IRVINE/ LOT 16 MSTB 5-6	1	6/26/2015 8:46	6/26/2015 11:54	3:08:39	2:20:25	8.38584	3.522	415 E Peltason Dr	0
UC IRVINE/ LOT 16 MSTB 1-2	1	6/26/2015 10:10	6/26/2015 11:51	1:40:41	1:39:25	10.1964 2	4.282	415 E Peltason Dr	0
UC IRVINE/ LOT 16 MSTB 3-4	2	6/26/2015 7:57	6/26/2015 11:45	3:47:28	3:47:10	19.1354	8.037	415 E Peltason Dr	0
UC IRVINE/ LOT 16 MSTB 1-2	2	6/26/2015 7:07	6/26/2015 8:44	1:36:27	1:22:50	2.71046 2	1.138	415 E Peltason Dr	0
UC IRVINE/ LOT 16 MSTB 3-4	1	6/25/2015 9:24	6/25/2015 12:02	2:37:42	2:30:40	10.3444 5	4.345	415 E Peltason Dr	0.06
UC IRVINE/ LOT 16 MSTB 5-6	1	6/25/2015 10:14	6/25/2015 11:59	1:45:25	1:45:13	10.9309 8	4.591	415 E Peltason Dr	0
UC IRVINE/ LOT 16 MSTB 1-2	1	6/25/2015 10:35	6/25/2015 11:55	1:19:50	1:14:25	7.67661 4	3.224	415 E Peltason Dr	0
UC IRVINE/ LOT 16 MSTB 1-2	1	6/24/2015 7:49	6/24/2015 12:34	4:44:56	3:17:50	14.9604 2	6.283	415 E Peltason Dr	0.87

Station Name	Port	Start Date	End Date	Total Duration (hh:mm:ss)	Charging Time (hh:mm:ss)	Energy (kWh)	GHG Savings	Address 1	Fee
UC IRVINE/ LOT 16 MSTB 1-2	2	6/24/2015 9:08	6/24/2015 12:01	2:53:06	2:09:10	7.89164 5	3.314	415 E Peltason Dr	0.04
UC IRVINE/ LOT 16 MSTB 3-4	1	6/24/2015 8:28	6/24/2015 11:31	3:03:15	2:54:00	12.8432 7	5.394	415 E Peltason Dr	0
UC IRVINE/ LOT 16 MSTB 5-6	1	6/24/2015 9:55	6/24/2015 11:52	1:57:23	1:54:49	11.7458 2	4.933	415 E Peltason Dr	0
UC IRVINE/ LOT 16 MSTB 1-2	1	6/23/2015 7:58	6/23/2015 12:26	4:28:20	3:26:35	16.0178 2	6.727	415 E Peltason Dr	0.67
UC IRVINE/ LOT 16 MSTB 3-4	1	6/23/2015 8:58	6/23/2015 1:57	2:59:31	2:51:10	12.6570 2	5.316	415 E Peltason Dr	0
UC IRVINE/ LOT 16 MSTB 3-4	2	6/23/2015 10:04	6/23/2015 11:54	1:50:39	1:46:04	10.9471	4.598	415 E Peltason Dr	0
UC IRVINE/ LOT 16 MSTB 5-6	1	6/23/2015 8:45	6/23/2015 10:51	2:06:16	1:50:19	6.34732 8	2.666	415 E Peltason Dr	0
UC IRVINE/ LOT 16 MSTB 5-6	1	6/22/2015 8:39	6/22/2015 12:32	3:52:26	2:53:20	12.1932 8	5.121	415 E Peltason Dr	0.81

Station Name	Port	Start Date	End Date	Total Duration (hh:mm:ss)	Charging Time (hh:mm:ss)	Energy (kWh)	GHG Savings	Address 1	Fee
UC IRVINE/ LOT 16 MSTB 1-2	2	6/22/2015 9:01	6/22/2015 2:12	3:10:21	2:06:30	7.70876 4	3.238	415 E Peltason Dr	0.31
UC IRVINE/ LOT 16 MSTB 3-4	1	6/22/2015 8:39	6/22/2015 1:57	3:17:46	2:57:50	13.4493 7	5.649	415 E Peltason Dr	0
UC IRVINE/ LOT 16 MSTB 3-4	2	6/22/2015 10:11	6/22/2015 11:54	1:43:20	1:38:39	10.1550 7	4.265	415 E Peltason Dr	0
UC IRVINE/ LOT 16 MSTB 1-2	1	6/22/2015 7:52	6/22/2015 10:29	2:37:16	2:02:19	7.49649 4	3.149	415 E Peltason Dr	0
UC IRVINE/ LOT 16 MSTB 5-6	1	6/19/2015 10:38	6/19/2015 11:59	1:20:15	1:11:05	7.27483 4	3.055	415 E Peltason Dr	0
UC IRVINE/ LOT 16 MSTB 3-4	1	6/19/2015 7:53	6/19/2015 11:41	3:47:46	3:09:45	14.5654 3	6.117	415 E Peltason Dr	0
UC IRVINE/ LOT 16 MSTB 1-2	1	6/19/2015 7:54	6/19/2015 11:46	3:52:07	3:45:21	17.8200 4	7.484	415 E Peltason Dr	0
UC IRVINE/ LOT 16 MSTB 3-4	2	6/18/2015 7:50	6/18/2015 12:15	4:25:11	3:35:00	16.8882 1	7.093	415 E Peltason Dr	0.39

Station Name	Port	Start Date	End Date	Total Duration (hh:mm:ss)	Charging Time (hh:mm:ss)	Energy (kWh)	GHG Savings	Address 1	Fee
UC IRVINE/ LOT 16 MSTB 3-4	1	6/18/2015 10:25	6/18/2015 11:55	1:29:47	1:29:35	4.75513 6	1.997	415 E Peltason Dr	0
UC IRVINE/ LOT 16 MSTB 1-2	1	6/18/2015 10:01	6/18/2015 11:50	1:49:01	1:48:45	11.2075 9	4.707	415 E Peltason Dr	0
UC IRVINE/ LOT 16 MSTB 5-6	2	6/18/2015 7:04	6/18/2015 11:43	4:39:32	3:28:15	11.0037 3	4.622	415 E Peltason Dr	0
UC IRVINE/ LOT 16 MSTB 1-2	2	6/18/2015 7:22	6/18/2015 9:02	1:40:02	1:22:39	2.70324 3	1.135	415 E Peltason Dr	0
UC IRVINE/ LOT 16 MSTB 3-4	2	6/17/2015 10:26	6/17/2015 13:10	2:43:26	2:43:20	16.2882 9	6.841	415 E Peltason Dr	1.76
UC IRVINE/ LOT 16 MSTB 3-4	1	6/17/2015 8:12	6/17/2015 12:00	3:47:34	3:22:10	15.8247 2	6.646	415 E Peltason Dr	0.01
UC IRVINE/ LOT 16 MSTB 5-6	2	6/17/2015 7:09	6/17/2015 12:00	4:50:45	3:35:09	11.3132 8	4.752	415 E Peltason Dr	0.01
UC IRVINE/ LOT 16 MSTB 1-2	1	6/17/2015 10:19	6/17/2015 11:55	1:35:37	1:30:05	9.29643 4	3.905	415 E Peltason Dr	0

Station Name	Port	Start Date	End Date	Total Duration (hh:mm:ss)	Charging Time (hh:mm:ss)	Energy (kWh)	GHG Savings	Address 1	Fee
UC IRVINE/ LOT 16 MSTB 5-6	2	6/16/2015 7:16	6/16/2015 2:17	5:00:46	3:17:26	10.9860 1	4.614	415 E Peltason Dr	0.44
UC IRVINE/ LOT 16 MSTB 3-4	1	6/16/2015 8:16	6/16/2015 11:56	3:40:08	3:12:54	14.8003 4	6.216	415 E Peltason Dr	0
UC IRVINE/ LOT 16 MSTB 1-2	1	6/16/2015 10:05	6/16/2015 11:55	1:49:20	1:43:45	10.7503 4	4.515	415 E Peltason Dr	0
UC IRVINE/ LOT 16 MSTB 5-6	1	6/16/2015 8:42	6/16/2015 11:37	2:54:37	2:00:24	7.36922 6	3.095	415 E Peltason Dr	0
UC IRVINE/ LOT 16 MSTB 5-6	2	6/15/2015 7:23	6/15/2015 12:29	5:05:51	3:09:40	10.5544	4.433	415 E Peltason Dr	0.73
UC IRVINE/ LOT 16 MSTB 3-4	1	6/15/2015 8:52	6/15/2015 11:49	2:57:12	2:56:55	17.8582 4	7.5	415 E Peltason Dr	0
UC IRVINE/ LOT 16 MSTB 3-4	2	6/15/2015 10:25	6/15/2015 11:43	1:17:53	1:17:40	4.11415	1.728	415 E Peltason Dr	0
UC IRVINE/ LOT 16 MSTB 3-4	2	6/14/2015 19:38	6/14/2015 20:47	1:09:53	1:09:35	7.04584 4	2.959	415 E Peltason Dr	0

Station Name	Port	Start Date	End Date	Total Duration (hh:mm:ss)	Charging Time (hh:mm:ss)	Energy (kWh)	GHG Savings	Address 1	Fee
UC IRVINE/ LOT 16 MSTB 3-4	2	6/14/2015 15:15	6/14/2015 18:52	3:37:21	2:12:53	6.83135 1	2.869	415 E Peltason Dr	4.12
UC IRVINE/ LOT 16 MSTB 3-4	2	6/13/2015 19:40	6/13/2015 20:21	0:40:53	0:30:24	2.90955	1.222	415 E Peltason Dr	0
UC IRVINE/ LOT 16 MSTB 5-6	2	6/13/2015 9:20	6/13/2015 11:44	2:23:51	2:23:40	14.3678 4	6.034	415 E Peltason Dr	0
UC IRVINE/ LOT 16 MSTB 1-2	2	6/13/2015 10:45	6/13/2015 11:26	0:40:19	0:39:59	4.02079 9	1.689	415 E Peltason Dr	0
UC IRVINE/ LOT 16 MSTB 5-6	1	6/12/2015 12:49	6/12/2015 13:53	1:04:45	1:04:14	3.38584 9	1.422	415 E Peltason Dr	1.62
UC IRVINE/ LOT 16 MSTB 1-2	2	6/12/2015 8:42	6/12/2015 12:33	3:51:37	2:07:14	7.62587 5	3.203	415 E Peltason Dr	0.85
UC IRVINE/ LOT 16 MSTB 3-4	1	6/12/2015 8:34	6/12/2015 11:43	3:09:07	2:29:59	8.56604 3	3.598	415 E Peltason Dr	0
UC IRVINE/ LOT 16 MSTB 5-6	1	6/12/2015 8:39	6/12/2015 11:01	2:21:51	1:32:13	4.35815 8	1.83	415 E Peltason Dr	0

Station Name	Port	Start Date	End Date	Total Duration (hh:mm:ss)	Charging Time (hh:mm:ss)	Energy (kWh)	GHG Savings	Address 1	Fee
UC IRVINE/ LOT 16 MSTB 5-6	2	6/11/2015 7:59	6/11/2015 12:14	4:15:12	3:29:06	11.6461 8	4.891	415 E Peltason Dr	0.37
UC IRVINE/ LOT 16 MSTB 3-4	2	6/11/2015 10:09	6/11/2015 11:52	1:42:43	1:40:34	8.25559 2	3.467	415 E Peltason Dr	0
UC IRVINE/ LOT 16 MSTB 1-2	2	6/10/2015 8:51	6/10/2015 12:56	4:05:10	1:55:35	6.72624 7	2.825	415 E Peltason Dr	1.42
UC IRVINE/ LOT 16 MSTB 5-6	2	6/10/2015 7:40	6/10/2015 12:16	4:36:32	3:16:50	10.9625 7	4.604	415 E Peltason Dr	0.42
UC IRVINE/ LOT 16 MSTB 3-4	1	6/10/2015 8:14	6/10/2015 11:53	3:38:53	3:33:16	17.3858 8	7.302	415 E Peltason Dr	0
UC IRVINE/ LOT 16 MSTB 3-4	2	6/10/2015 10:00	6/10/2015 11:56	1:56:54	1:49:50	10.5518 6	4.432	415 E Peltason Dr	0
UC IRVINE/ LOT 16 MSTB 5-6	2	6/9/2015 7:14	6/9/2015 12:13	4:59:01	3:00:45	10.0604 9	4.225	415 E Peltason Dr	0.33
UC IRVINE/ LOT 16 MSTB 5-6	1	6/9/2015 9:58	6/9/2015 11:59	2:01:03	2:00:54	12.5375 7	5.266	415 E Peltason Dr	0

Station Name	Port	Start Date	End Date	Total Duration (hh:mm:ss)	Charging Time (hh:mm:ss)	Energy (kWh)	GHG Savings	Address 1	Fee
UC IRVINE/ LOT 16 MSTB 1-2	1	6/9/2015 10:07	6/9/2015 11:55	1:48:13	1:42:34	10.5206 9	4.419	415 E Peltason Dr	0
UC IRVINE/ LOT 16 MSTB 3-4	1	6/9/2015 8:12	6/9/2015 11:53	3:40:44	3:40:30	17.9035 2	7.519	415 E Peltason Dr	0
UC IRVINE/ LOT 16 MSTB 1-2	1	6/8/2015 9:53	6/8/2015 11:55	2:01:45	1:56:14	11.9426	5.016	415 E Peltason Dr	0
UC IRVINE/ LOT 16 MSTB 3-4	1	6/8/2015 9:19	6/8/2015 11:54	2:35:12	2:35:00	16.0437	6.738	415 E Peltason Dr	0
UC IRVINE/ LOT 16 MSTB 5-6	1	6/8/2015 10:02	6/8/2015 11:49	1:47:37	1:47:25	11.0764 8	4.652	415 E Peltason Dr	0
UC IRVINE/ LOT 16 MSTB 5-6	2	6/8/2015 7:37	6/8/2015 11:06	3:28:27	3:14:35	10.8396 4	4.553	415 E Peltason Dr	0
UC IRVINE/ LOT 16 MSTB 5-6	2	6/6/2015 9:31	6/6/2015 11:30	1:58:30	1:58:10	11.8845 5	4.992	415 E Peltason Dr	0
UC IRVINE/ LOT 16 MSTB 3-4	1	6/5/2015 10:37	6/5/2015 11:58	1:21:16	1:20:50	8.43879 7	3.544	415 E Peltason Dr	0

Station Name	Port	Start Date	End Date	Total Duration (hh:mm:ss)	Charging Time (hh:mm:ss)	Energy (kWh)	GHG Savings	Address 1	Fee
UC IRVINE/ LOT 16 MSTB 5-6	1	6/5/2015 9:20	6/5/2015 11:15	1:55:37	1:55:24	10.729	4.506	415 E Peltason Dr	0
UC IRVINE/ LOT 16 MSTB 3-4	1	6/5/2015 8:29	6/5/2015 10:33	2:03:40	2:03:30	12.8599 4	5.401	415 E Peltason Dr	0
UC IRVINE/ LOT 16 MSTB 5-6	2	6/4/2015 7:46	6/4/2015 15:03	7:17:10	3:25:59	11.4670 7	4.816	415 E Peltason Dr	4.6
UC IRVINE/ LOT 16 MSTB 3-4	2	6/4/2015 12:21	6/4/2015 13:51	1:30:26	1:30:10	5.08770 5	2.137	415 E Peltason Dr	2.26
UC IRVINE/ LOT 16 MSTB 1-2	1	6/4/2015 9:29	6/4/2015 12:21	2:52:03	2:40:20	8.50388	3.572	415 E Peltason Dr	0.53
UC IRVINE/ LOT 16 MSTB 5-6	1	6/4/2015 9:15	6/4/2015 12:01	2:46:30	2:46:15	17.3645 3	7.293	415 E Peltason Dr	0.05
UC IRVINE/ LOT 16 MSTB 3-4	2	6/4/2015 9:06	6/4/2015 11:52	2:46:29	2:09:05	7.33146 4	3.079	415 E Peltason Dr	0
UC IRVINE/ LOT 16 MSTB 3-4	1	6/4/2015 8:19	6/4/2015 10:47	2:28:18	2:28:05	12.5234 5	5.26	415 E Peltason Dr	0

Station Name	Port	Start Date	End Date	Total Duration (hh:mm:ss)	Charging Time (hh:mm:ss)	Energy (kWh)	GHG Savings	Address 1	Fee
UC IRVINE/ LOT 16 MSTB 1-2	2	6/4/2015 8:03	6/4/2015 10:17	2:13:56	1:21:50	2.68467	1.128	415 E Peltason Dr	0
UC IRVINE/ LOT 16 MSTB 1-2	2	6/3/2015 9:03	6/3/2015 12:29	3:25:33	2:59:01	10.84034	4.553	415 E Peltason Dr	0.73
UC IRVINE/ LOT 16 MSTB 5-6	2	6/3/2015 7:27	6/3/2015 12:21	4:53:12	3:23:24	11.31867	4.754	415 E Peltason Dr	0.53
UC IRVINE/ LOT 16 MSTB 5-6	1	6/3/2015 10:19	6/3/2015 11:59	1:39:59	1:39:45	10.46665	4.396	415 E Peltason Dr	0
UC IRVINE/ LOT 16 MSTB 3-4	1	6/3/2015 8:22	6/3/2015 11:55	3:33:11	3:24:31	15.88749	6.673	415 E Peltason Dr	0
UC IRVINE/ LOT 16 MSTB 3-4	2	6/3/2015 10:07	6/3/2015 11:47	1:40:10	1:39:55	8.113529	3.408	415 E Peltason Dr	0
UC IRVINE/ LOT 16 MSTB 5-6	2	6/2/2015 12:49	6/2/2015 14:12	1:22:34	1:22:15	4.580987	1.924	415 E Peltason Dr	2.06
UC IRVINE/ LOT 16 MSTB 5-6	1	6/2/2015 10:30	6/2/2015 12:00	1:29:19	1:29:04	9.271596	3.894	415 E Peltason Dr	0

Station Name	Port	Start Date	End Date	Total Duration (hh:mm:ss)	Charging Time (hh:mm:ss)	Energy (kWh)	GHG Savings	Address 1	Fee
UC IRVINE/ LOT 16 MSTB 1-2	1	6/2/2015 9:40	6/2/2015 11:54	2:14:26	2:09:30	8.33008 5	3.499	415 E Peltason Dr	0
UC IRVINE/ LOT 16 MSTB 3-4	1	6/2/2015 8:18	6/2/2015 11:49	3:30:41	3:17:35	15.4109 9	6.473	415 E Peltason Dr	0
UC IRVINE/ LOT 16 MSTB 5-6	2	6/2/2015 9:12	6/2/2015 11:36	2:24:36	2:24:20	8.04083 3	3.377	415 E Peltason Dr	0
UC IRVINE/ LOT 16 MSTB 1-2	2	6/1/2015 18:01	6/1/2015 18:33	0:31:27	0:30:44	3.00937 9	1.264	415 E Peltason Dr	0
UC IRVINE/ LOT 16 MSTB 5-6	1	6/1/2015 10:10	6/1/2015 11:55	1:45:05	1:44:55	10.9621 7	4.604	415 E Peltason Dr	0
UC IRVINE/ LOT 16 MSTB 3-4	2	6/1/2015 9:57	6/1/2015 11:55	1:58:12	1:52:19	9.01023 2	3.784	415 E Peltason Dr	0
UC IRVINE/ LOT 16 MSTB 1-2	2	6/1/2015 9:01	6/1/2015 11:54	2:53:15	2:07:10	7.62709 8	3.203	415 E Peltason Dr	0
UC IRVINE/ LOT 16 MSTB 3-4	1	6/1/2015 8:39	6/1/2015 11:42	3:02:22	3:02:10	17.2426 1	7.242	415 E Peltason Dr	0

Station Name	Port	Start Date	End Date	Total Duration (hh:mm:ss)	Charging Time (hh:mm:ss)	Energy (kWh)	GHG Savings	Address 1	Fee
UC IRVINE/ LOT 16 MSTB 5-6	2	6/1/2015 7:06	6/1/2015 11:36	4:30:20	3:22:29	11.2760 3	4.736	415 E Peltason Dr	0
UC IRVINE/ LOT 16 MSTB 5-6	2	5/29/2015 19:12	5/29/2015 19:23	0:10:41	0:10:18	0.61961 9	0.26	415 E Peltason Dr	0
UC IRVINE/ LOT 16 MSTB 5-6	1	5/29/2015 9:22	5/29/2015 18:23	9:01:14	2:19:34	8.98102 9	3.772	415 E Peltason Dr	9
UC IRVINE/ LOT 16 MSTB 1-2	1	5/29/2015 15:38	5/29/2015 16:59	1:20:57	0:45:10	4.7473	1.994	415 E Peltason Dr	2.02
UC IRVINE/ LOT 16 MSTB 3-4	1	5/29/2015 9:27	5/29/2015 12:13	2:45:45	2:24:20	8.68592	3.648	415 E Peltason Dr	0.34
UC IRVINE/ LOT 16 MSTB 1-2	1	5/29/2015 10:03	5/29/2015 11:49	1:46:39	1:46:25	8.43182 8	3.541	415 E Peltason Dr	0
UC IRVINE/ LOT 16 MSTB 5-6	2	5/29/2015 8:48	5/29/2015 11:39	2:51:24	2:51:10	16.6584 4	6.997	415 E Peltason Dr	0
UC IRVINE/ LOT 16 MSTB 5-6	2	5/28/2015 7:56	5/28/2015 12:29	4:32:48	3:20:20	11.1519	4.684	415 E Peltason Dr	0.74

Station Name	Port	Start Date	End Date	Total Duration (hh:mm:ss)	Charging Time (hh:mm:ss)	Energy (kWh)	GHG Savings	Address 1	Fee
UC IRVINE/ LOT 16 MSTB 3-4	1	5/28/2015 8:20	5/28/2015 11:54	3:34:05	3:01:19	13.2043 1	5.546	415 E Peltason Dr	0
UC IRVINE/ LOT 16 MSTB 1-2	1	5/28/2015 9:59	5/28/2015 11:51	1:51:48	1:49:54	9.19078 5	3.86	415 E Peltason Dr	0
UC IRVINE/ LOT 16 MSTB 5-6	1	5/27/2015 12:47	5/27/2015 13:49	1:01:43	1:01:34	6.10441 5	2.564	415 E Peltason Dr	1.54
UC IRVINE/ LOT 16 MSTB 1-2	2	5/27/2015 10:34	5/27/2015 13:23	2:48:43	2:48:30	9.13977	3.839	415 E Peltason Dr	2.08
UC IRVINE/ LOT 16 MSTB 3-4	2	5/27/2015 7:17	5/27/2015 2:10	4:52:41	3:22:20	11.2152 2	4.71	415 E Peltason Dr	0.25
UC IRVINE/ LOT 16 MSTB 5-6	1	5/27/2015 10:35	5/27/2015 11:59	1:23:46	1:23:24	8.70329 3	3.655	415 E Peltason Dr	0
UC IRVINE/ LOT 16 MSTB 5-6	2	5/27/2015 9:05	5/27/2015 11:53	2:47:52	2:41:59	11.1241 5	4.672	415 E Peltason Dr	0
UC IRVINE/ LOT 16 MSTB 1-2	1	5/27/2015 9:59	5/27/2015 1:47	1:48:14	1:48:00	8.65509 2	3.635	415 E Peltason Dr	0

Station Name	Port	Start Date	End Date	Total Duration (hh:mm:ss)	Charging Time (hh:mm:ss)	Energy (kWh)	GHG Savings	Address 1	Fee
UC IRVINE/ LOT 16 MSTB 5-6	2	5/27/2015 6:22	5/27/2015 8:23	2:01:20	2:00:49	6.68163 3	2.806	415 E Peltason Dr	0
UC IRVINE/ LOT 16 MSTB 5-6	2	5/26/2015 18:20	5/26/2015 18:47	0:26:50	0:26:23	2.71414 6	1.14	415 E Peltason Dr	0
UC IRVINE/ LOT 16 MSTB 3-4	1	5/26/2015 15:14	5/26/2015 15:14	0:00:04	0:00:00	0	0	415 E Peltason Dr	0
UC IRVINE/ LOT 16 MSTB 5-6	2	5/26/2015 7:05	5/26/2015 12:22	5:17:22	3:19:19	11.0802 2	4.654	415 E Peltason Dr	0.57
UC IRVINE/ LOT 16 MSTB 3-4	1	5/26/2015 8:40	5/26/2015 11:53	3:12:30	3:12:10	18.7775 4	7.887	415 E Peltason Dr	0
UC IRVINE/ LOT 16 MSTB 1-2	1	5/26/2015 9:29	5/26/2015 11:51	2:21:48	2:20:25	12.6784	5.325	415 E Peltason Dr	0
UC IRVINE/ LOT 16 MSTB 5-6	2	5/25/2015 10:29	5/25/2015 11:47	1:18:30	0:59:16	6.01770 2	2.527	415 E Peltason Dr	0
UC IRVINE/ LOT 16 MSTB 3-4	1	5/24/2015 8:44	5/24/2015 8:59	0:15:22	0:00:00	0	0	415 E Peltason Dr	0

Station Name	Port	Start Date	End Date	Total Duration (hh:mm:ss)	Charging Time (hh:mm:ss)	Energy (kWh)	GHG Savings	Address 1	Fee
UC IRVINE/ LOT 16 MSTB 5-6	1	5/24/2015 8:43	5/24/2015 8:45	0:02:00	0:00:00	0	0	415 E Peltason Dr	0
UC IRVINE/ LOT 16 MSTB 5-6	2	5/23/2015 8:31	5/23/2015 11:50	3:19:10	3:18:55	20.2081 8	8.487	415 E Peltason Dr	0
UC IRVINE/ LOT 16 MSTB 5-6	2	5/22/2015 19:50	5/22/2015 20:31	0:41:44	0:41:14	4.22260 9	1.773	415 E Peltason Dr	0
UC IRVINE/ LOT 16 MSTB 1-2	1	5/22/2015 10:23	5/22/2015 11:51	1:28:13	1:26:04	8.23358 7	3.458	415 E Peltason Dr	0
UC IRVINE/ LOT 16 MSTB 5-6	2	5/22/2015 10:13	5/22/2015 11:48	1:35:08	1:34:44	9.9633	4.185	415 E Peltason Dr	0
UC IRVINE/ LOT 16 MSTB 3-4	1	5/22/2015 8:49	5/22/2015 11:04	2:15:23	2:15:09	10.7727 2	4.525	415 E Peltason Dr	0
UC IRVINE/ LOT 16 MSTB 3-4	1	5/21/2015 18:34	5/21/2015 18:53	0:19:30	0:18:59	1.92029 7	0.807	415 E Peltason Dr	0
UC IRVINE/ LOT 16 MSTB 3-4	2	5/21/2015 9:34	5/21/2015 3:38	4:04:26	3:49:55	12.1411 2	5.099	415 E Peltason Dr	2.46

Station Name	Port	Start Date	End Date	Total Duration (hh:mm:ss)	Charging Time (hh:mm:ss)	Energy (kWh)	GHG Savings	Address 1	Fee
UC IRVINE/ LOT 16 MSTB 3-4	1	5/21/2015 8:43	5/21/2015 11:19	2:36:19	2:36:05	13.6325 7	5.726	415 E Peltason Dr	0
UC IRVINE/ LOT 16 MSTB 1-2	1	5/21/2015 9:09	5/21/2015 11:53	2:44:24	2:40:50	12.6880 2	5.329	415 E Peltason Dr	0
UC IRVINE/ LOT 16 MSTB 5-6	2	5/21/2015 7:49	5/21/2015 11:52	4:03:09	3:34:15	11.9236 2	5.008	415 E Peltason Dr	0
UC IRVINE/ LOT 16 MSTB 5-6	1	5/20/2015 13:31	5/20/2015 13:57	0:26:15	0:13:29	1.40660 3	0.591	415 E Peltason Dr	0.66
UC IRVINE/ LOT 16 MSTB 3-4	1	5/20/2015 10:55	5/20/2015 13:46	2:50:26	2:50:10	9.09849	3.821	415 E Peltason Dr	2.65
UC IRVINE/ LOT 16 MSTB 1-2	1	5/20/2015 10:34	5/20/2015 11:50	1:15:43	1:15:10	7.80767 8	3.279	415 E Peltason Dr	0
UC IRVINE/ LOT 16 MSTB 3-4	2	5/20/2015 8:15	5/20/2015 11:12	2:56:22	2:56:10	13.5527	5.692	415 E Peltason Dr	0
UC IRVINE/ LOT 16 MSTB 5-6	2	5/20/2015 6:59	5/20/2015 11:50	4:50:07	3:19:20	11.0870 6	4.657	415 E Peltason Dr	0

Station Name	Port	Start Date	End Date	Total Duration (hh:mm:ss)	Charging Time (hh:mm:ss)	Energy (kWh)	GHG Savings	Address 1	Fee
UC IRVINE/ LOT 16 MSTB 5-6	1	5/19/2015 10:14	5/19/2015 12:00	1:45:41	1:45:30	11.0819 9	4.654	415 E Peltason Dr	0.01
UC IRVINE/ LOT 16 MSTB 1-2	1	5/19/2015 9:04	5/19/2015 11:49	2:45:22	2:29:25	9.12817 7	3.834	415 E Peltason Dr	0
UC IRVINE/ LOT 16 MSTB 3-4	1	5/19/2015 8:22	5/19/2015 11:27	3:04:47	3:04:35	15.0175 5	6.307	415 E Peltason Dr	0
UC IRVINE/ LOT 16 MSTB 5-6	2	5/19/2015 7:03	5/19/2015 11:05	4:01:34	3:21:40	11.2277 7	4.716	415 E Peltason Dr	0
UC IRVINE/ LOT 16 MSTB 3-4	1	5/18/2015 8:52	5/18/2015 11:50	2:58:43	2:58:30	18.4942 1	7.768	415 E Peltason Dr	0
UC IRVINE/ LOT 16 MSTB 5-6	2	5/18/2015 7:12	5/18/2015 11:48	4:36:01	3:25:24	11.4397 9	4.805	415 E Peltason Dr	0
UC IRVINE/ LOT 16 MSTB 1-2	1	5/18/2015 9:29	5/18/2015 11:42	2:12:43	2:12:35	13.7190 7	5.762	415 E Peltason Dr	0
UC IRVINE/ LOT 16 MSTB 1-2	2	5/15/201510:47	5/15/2015 11:46	0:58:43	0:31:19	1.51719 8	0.637	415 E Peltason Dr	0

Station Name	Port	Start Date	End Date	Total Duration (hh:mm:ss)	Charging Time (hh:mm:ss)	Energy (kWh)	GHG Savings	Address 1	Fee
UC IRVINE/ LOT 16 MSTB 3-4	1	5/15/2015 8:36	5/15/2015 11:43	3:06:35	3:06:25	19.3616 6	8.132	415 E Peltason Dr	0
UC IRVINE/ LOT 16 MSTB 5-6	2	5/15/2015 7:05	5/15/2015 9:47	2:42:22	2:33:49	8.22952 2	3.456	415 E Peltason Dr	0
UC IRVINE/ LOT 16 MSTB 3-4	1	5/14/2015 9:55	5/14/2015 13:58	4:02:07	3:48:06	11.9912 6	5.036	415 E Peltason Dr	2.95
UC IRVINE/ LOT 16 MSTB 5-6	2	5/14/2015 7:32	5/14/2015 11:58	4:25:16	3:27:25	11.5475 8	4.85	415 E Peltason Dr	0
UC IRVINE/ LOT 16 MSTB 3-4	2	5/14/2015 9:01	5/14/2015 11:42	2:40:52	2:14:45	7.74953 9	3.255	415 E Peltason Dr	0
UC IRVINE/ LOT 16 MSTB 3-4	2	5/13/2015 9:59	5/13/2015 13:22	3:23:38	3:23:30	10.8337 2	4.55	415 E Peltason Dr	2.07
UC IRVINE/ LOT 16 MSTB 3-4	1	5/13/2015 9:25	5/13/2015 12:04	2:39:28	2:39:15	13.8938 9	5.835	415 E Peltason Dr	0.12
UC IRVINE/ LOT 16 MSTB 1-2	1	5/13/2015 9:53	5/13/2015 11:50	1:57:45	1:56:49	8.40347 7	3.529	415 E Peltason Dr	0

Station Name	Port	Start Date	End Date	Total Duration (hh:mm:ss)	Charging Time (hh:mm:ss)	Energy (kWh)	GHG Savings	Address 1	Fee
UC IRVINE/ LOT 16 MSTB 5-6	2	5/13/2015 7:37	5/13/2015 11:07	3:29:45	3:26:55	11.5149 3	4.836	415 E Peltason Dr	0
UC IRVINE/ LOT 16 MSTB 5-6	2	5/12/2015 10:08	5/12/2015 14:12	4:04:10	4:04:01	13.5931	5.709	415 E Peltason Dr	3.32
UC IRVINE/ LOT 16 MSTB 3-4	1	5/12/2015 12:35	5/12/2015 13:50	1:15:01	1:14:39	7.80187 9	3.277	415 E Peltason Dr	1.88
UC IRVINE/ LOT 16 MSTB 5-6	1	5/12/2015 9:45	5/12/2015 12:08	2:22:20	2:22:09	14.9216 9	6.267	415 E Peltason Dr	0.2
UC IRVINE/ LOT 16 MSTB 3-4	2	5/12/2015 9:40	5/12/2015 12:08	2:27:55	2:27:50	7.82171 3	3.285	415 E Peltason Dr	0.2
UC IRVINE/ LOT 16 MSTB 3-4	1	5/12/2015 8:21	5/12/2015 11:51	3:30:41	3:14:00	14.6744 7	6.163	415 E Peltason Dr	0
UC IRVINE/ LOT 16 MSTB 1-2	1	5/12/2015 8:38	5/12/2015 11:36	2:57:58	2:49:35	11.5158 6	4.837	415 E Peltason Dr	0
UC IRVINE/ LOT 16 MSTB 3-4	2	5/11/2015 10:40	5/11/2015 3:35	2:54:48	2:54:40	9.24327 9	3.882	415 E Peltason Dr	2.39

Station Name	Port	Start Date	End Date	Total Duration (hh:mm:ss)	Charging Time (hh:mm:ss)	Energy (kWh)	GHG Savings	Address 1	Fee
UC IRVINE/ LOT 16 MSTB 5-6	1	5/11/2015 10:11	5/11/2015 11:59	1:47:52	1:47:45	11.2578 1	4.728	415 E Peltason Dr	0
UC IRVINE/ LOT 16 MSTB 5-6	2	5/11/2015 7:29	5/11/2015 11:37	4:08:20	3:13:15	10.7597 6	4.519	415 E Peltason Dr	0
UC IRVINE/ LOT 16 MSTB 3-4	1	5/11/2015 8:37	5/11/2015 10:27	1:50:02	1:49:44	9.70933 7	4.078	415 E Peltason Dr	0
UC IRVINE/ LOT 16 MSTB 5-6	2	5/9/2015 18:47	5/9/2015 18:54	0:07:41	0:07:24	0.39620 3	0.166	415 E Peltason Dr	0
UC IRVINE/ LOT 16 MSTB 5-6	2	5/9/2015 9:20	5/9/2015 11:52	2:32:08	2:31:44	15.3721	6.456	415 E Peltason Dr	0
UC IRVINE/ LOT 16 MSTB 5-6	2	5/8/2015 11:10	5/8/2015 12:04	0:54:06	0:53:59	5.61150 3	2.357	415 E Peltason Dr	0.11
UC IRVINE/ LOT 16 MSTB 5-6	1	5/8/2015 10:11	5/8/2015 12:00	1:48:31	1:48:14	11.3873 4	4.783	415 E Peltason Dr	0
UC IRVINE/ LOT 16 MSTB 3-4	2	5/8/2015 10:06	5/8/2015 11:53	1:47:09	1:43:35	7.92084 8	3.327	415 E Peltason Dr	0

Station Name	Port	Start Date	End Date	Total Duration (hh:mm:ss)	Charging Time (hh:mm:ss)	Energy (kWh)	GHG Savings	Address 1	Fee
UC IRVINE/ LOT 16 MSTB 5-6	2	5/7/2015 9:39	5/7/2015 15:18	5:39:30	3:51:50	12.1226 7	5.092	415 E Peltason Dr	4.97
UC IRVINE/ LOT 16 MSTB 5-6	1	5/7/2015 9:53	5/7/2015 12:00	2:07:12	2:07:00	13.2941 5	5.584	415 E Peltason Dr	0.01
UC IRVINE/ LOT 16 MSTB 1-2	1	5/7/2015 9:15	5/7/2015 11:51	2:36:07	2:30:21	8.82441 3	3.706	415 E Peltason Dr	0
UC IRVINE/ LOT 16 MSTB 3-4	1	5/7/2015 8:12	5/7/2015 11:50	3:37:46	3:37:30	17.3308 1	7.279	415 E Peltason Dr	0
UC IRVINE/ LOT 16 MSTB 5-6	1	5/6/2015 10:08	5/6/2015 13:30	3:21:45	3:21:31	10.7018 9	4.495	415 E Peltason Dr	2.26
UC IRVINE/ LOT 16 MSTB 5-6	2	5/6/2015 7:07	5/6/2015 11:58	4:50:26	2:23:54	7.71077 5	3.239	415 E Peltason Dr	0
UC IRVINE/ LOT 16 MSTB 3-4	1	5/6/2015 9:47	5/6/2015 11:50	2:03:25	2:02:25	8.06672 8	3.388	415 E Peltason Dr	0
UC IRVINE/ LOT 16 MSTB 3-4	2	5/6/2015 7:07	5/6/2015 11:11	4:03:26	3:21:00	11.1433 9	4.68	415 E Peltason Dr	0

Station Name	Port	Start Date	End Date	Total Duration (hh:mm:ss)	Charging Time (hh:mm:ss)	Energy (kWh)	GHG Savings	Address 1	Fee
UC IRVINE/ LOT 16 MSTB 1-2	1	5/6/2015 8:10	5/6/2015 10:45	2:35:05	2:34:55	11.2933 8	4.743	415 E Peltason Dr	0
UC IRVINE/ LOT 16 MSTB 1-2	2	5/6/2015 7:41	5/6/2015 9:14	1:32:29	1:23:22	2.71891 2	1.142	415 E Peltason Dr	0
UC IRVINE/ LOT 16 MSTB 3-4	1	5/6/2015 8:03	5/6/2015 8:31	0:28:24	0:28:03	1.56076 4	0.656	415 E Peltason Dr	0
UC IRVINE/ LOT 16 MSTB 5-6	1	5/5/2015 13:33	5/5/2015 15:46	2:12:58	2:12:45	14.0070 9	5.883	415 E Peltason Dr	3.32
UC IRVINE/ LOT 16 MSTB 3-4	2	5/5/2015 12:58	5/5/2015 12:59	0:01:35	0:01:02	0.04117 1	0.017	415 E Peltason Dr	0
UC IRVINE/ LOT 16 MSTB 5-6	1	5/5/2015 10:31	5/5/2015 11:53	1:22:07	1:21:54	8.61880 7	3.62	415 E Peltason Dr	0
UC IRVINE/ LOT 16 MSTB 1-2	1	5/5/2015 9:15	5/5/2015 11:55	2:40:39	2:21:25	8.54887 7	3.591	415 E Peltason Dr	0
UC IRVINE/ LOT 16 MSTB 5-6	2	5/5/2015 7:35	5/5/2015 11:55	4:20:01	3:29:16	11.6399 7	4.889	415 E Peltason Dr	0

Station Name	Port	Start Date	End Date	Total Duration (hh:mm:ss)	Charging Time (hh:mm:ss)	Energy (kWh)	GHG Savings	Address 1	Fee
UC IRVINE/ LOT 16 MSTB 3-4	1	5/5/2015 8:15	5/5/2015 10:51	2:35:10	2:34:54	12.44258	5.226	415 E Peltason Dr	0
UC IRVINE/ LOT 16 MSTB 5-6	1	5/4/2015 14:57	5/4/2015 17:20	2:23:03	2:22:50	8.986752	3.774	415 E Peltason Dr	3.58
UC IRVINE/ LOT 16 MSTB 3-4	2	5/4/2015 9:38	5/4/2015 12:11	2:32:48	2:32:41	8.082185	3.395	415 E Peltason Dr	0.28
UC IRVINE/ LOT 16 MSTB 3-4	1	5/4/2015 8:35	5/4/2015 11:46	3:11:47	3:04:15	13.84796	5.816	415 E Peltason Dr	0
UC IRVINE/ LOT 16 MSTB 5-6	1	5/4/2015 10:09	5/4/2015 12:01	1:52:04	1:51:54	11.74175	4.932	415 E Peltason Dr	0.05
UC IRVINE/ LOT 16 MSTB 5-6	2	5/4/2015 7:12	5/4/2015 11:48	4:36:34	3:19:29	11.10782	4.665	415 E Peltason Dr	0
UC IRVINE/ LOT 16 MSTB 5-6	1	5/1/2015 10:07	5/1/2015 12:00	1:53:07	1:52:54	11.73616	4.929	415 E Peltason Dr	0.01
UC IRVINE/ LOT 16 MSTB 1-2	1	5/1/2015 10:26	5/1/2015 11:54	1:27:32	1:23:05	8.24193	3.462	415 E Peltason Dr	0

Station Name	Port	Start Date	End Date	Total Duration (hh:mm:ss)	Charging Time (hh:mm:ss)	Energy (kWh)	GHG Savings	Address 1	Fee
UC IRVINE/ LOT 16 MSTB 3-4	1	4/30/2015 18:00	4/30/2015 18:21	0:21:00	0:20:39	2.13848 9	0.898	415 E Peltason Dr	0
UC IRVINE/ LOT 16 MSTB 3-4	2	4/30/2015 10:02	4/30/2015 15:17	5:14:25	4:10:05	14.0156	5.887	415 E Peltason Dr	4.93
UC IRVINE/ LOT 16 MSTB 5-6	2	4/30/2015 13:24	4/30/2015 15:14	1:49:49	1:49:30	6.10327 4	2.563	415 E Peltason Dr	2.7 5
UC IRVINE/ LOT 16 MSTB 5-6	2	4/30/2015 7:54	4/30/2015 12:27	4:33:46	3:30:00	11.6973 7	4.913	415 E Peltason Dr	0 .7
UC IRVINE/ LOT 16 MSTB 5-6	1	4/30/2015 10:43	4/30/2015 11:58	1:14:41	1:14:25	7.74194 1	3.252	415 E Peltason Dr	0
UC IRVINE/ LOT 16 MSTB 1-2	1	4/30/2015 9:54	4/30/2015 11:52	1:58:10	1:55:29	8.14274 9	3.42	415 E Peltason Dr	0
UC IRVINE/ LOT 16 MSTB 3-4	1	4/30/2015 8:40	4/30/2015 11:49	3:08:50	3:08:35	19.3877	8.143	415 E Peltason Dr	0
UC IRVINE/ LOT 16 MSTB 1-2	2	4/30/2015 7:22	4/30/2015 9:18	1:55:57	1:22:04	2.68517 7	1.128	415 E Peltason Dr	0

Station Name	Port	Start Date	End Date	Total Duration (hh:mm:ss)	Charging Time (hh:mm:ss)	Energy (kWh)	GHG Savings	Address 1	Fee
UC IRVINE/ LOT 16 MSTB 5-6	2	4/29/2015 10:53	4/29/2015 14:29	3:36:22	3:36:10	12.0616	5.066	415 E Peltason Dr	3.7 4
UC IRVINE/ LOT 16 MSTB 3-4	2	4/29/2015 10:21	4/29/2015 11:55	1:33:54	1:33:30	9.73133 4	4.087	415 E Peltason Dr	0
UC IRVINE/ LOT 16 MSTB 3-4	1	4/29/2015 8:46	4/29/2015 11:32	2:46:12	2:45:56	16.7923 9	7.053	415 E Peltason Dr	0
UC IRVINE/ LOT 16 MSTB 5-6	1	4/29/2015 10:08	4/29/2015 11:48	1:40:42	1:40:29	8.07716 2	3.392	415 E Peltason Dr	0
UC IRVINE/ LOT 16 MSTB 1-2	2	4/29/2015 9:46	4/29/2015 10:53	1:07:11	1:06:55	2.47429 2	1.039	415 E Peltason Dr	0
UC IRVINE/ LOT 16 MSTB 3-4	1	4/28/2015 18:45	4/28/2015 18:53	0:08:12	0:07:34	0.78411 7	0.329	415 E Peltason Dr	0
UC IRVINE/ LOT 16 MSTB 5-6	1	4/28/2015 10:41	4/28/2015 11:51	1:10:22	1:10:08	7.30321 5	3.067	415 E Peltason Dr	0
UC IRVINE/ LOT 16 MSTB 3-4	1	4/28/2015 8:25	4/28/2015 11:49	3:23:54	3:11:35	13.3622 2	5.612	415 E Peltason Dr	0

Station Name	Port	Start Date	End Date	Total Duration (hh:mm:ss)	Charging Time (hh:mm:ss)	Energy (kWh)	GHG Savings	Address 1	Fee
UC IRVINE/ LOT 16 MSTB 1-2	1	4/28/2015 8:34	4/28/2015 11:28	2:53:43	2:30:30	8.71794 2	3.662	415 E Peltason Dr	0
UC IRVINE/ LOT 16 MSTB 5-6	1	4/27/2015 9:43	4/27/2015 11:51	2:08:25	2:08:10	13.2051 9	5.546	415 E Peltason Dr	0
UC IRVINE/ LOT 16 MSTB 3-4	1	4/27/2015 9:22	4/27/2015 11:51	2:28:05	2:27:45	15.2333 7	6.398	415 E Peltason Dr	0
UC IRVINE/ LOT 16 MSTB 3-4	2	4/27/2015 9:43	4/27/2015 11:36	1:52:52	1:52:40	11.5628 2	4.856	415 E Peltason Dr	0
UC IRVINE/ LOT 16 MSTB 1-2	2	4/27/2015 7:14	4/27/2015 10:03	2:48:58	1:23:00	2.71751	1.141	415 E Peltason Dr	0
UC IRVINE/ LOT 16 MSTB 5-6	1	4/24/2015 10:14	4/24/2015 11:54	1:40:35	1:40:24	10.5457 9	4.429	415 E Peltason Dr	0
UC IRVINE/ LOT 16 MSTB 3-4	1	4/24/2015 10:01	4/24/2015 11:46	1:44:03	1:43:50	8.55762 2	3.594	415 E Peltason Dr	0
UC IRVINE/ LOT 16 MSTB 3-4	2	4/23/2015 11:11	4/23/2015 3:53	2:42:20	2:42:05	8.66046	3.637	415 E Peltason Dr	2.8 4

Station Name	Port	Start Date	End Date	Total Duration (hh:mm:ss)	Charging Time (hh:mm:ss)	Energy (kWh)	GHG Savings	Address 1	Fee
UC IRVINE/ LOT 16 MSTB 5-6	2	4/23/2015 7:05	4/23/2015 11:58	4:53:18	3:26:21	12.0038 3	5.042	415 E Peltason Dr	0
UC IRVINE/ LOT 16 MSTB 3-4	2	4/23/2015 7:37	4/23/2015 10:52	3:15:21	2:05:24	8.07822 5	3.393	415 E Peltason Dr	0
UC IRVINE/ LOT 16 MSTB 1-2	2	4/23/2015 7:23	4/23/2015 10:18	2:54:51	1:23:19	2.70183 9	1.135	415 E Peltason Dr	0
UC IRVINE/ LOT 16 MSTB 3-4	1	4/22/2015 10:16	4/22/2015 12:23	2:06:33	2:06:24	6.77170 4	2.844	415 E Peltason Dr	0.5 9
UC IRVINE/ LOT 16 MSTB 5-6	1	4/22/2015 10:24	4/22/2015 11:58	1:33:51	1:33:39	9.89856 1	4.157	415 E Peltason Dr	0
UC IRVINE/ LOT 16 MSTB 3-4	2	4/22/2015 10:06	4/22/2015 11:44	1:37:48	1:37:29	8.84337 2	3.714	415 E Peltason Dr	0
UC IRVINE/ LOT 16 MSTB 5-6	2	4/22/2015 7:08	4/22/2015 11:09	4:00:57	3:30:30	11.7070 4	4.917	415 E Peltason Dr	0
UC IRVINE/ LOT 16 MSTB 3-4	1	4/21/2015 10:19	4/21/2015 12:12	1:52:42	1:52:34	5.99555 7	2.518	415 E Peltason Dr	0.31

Station Name	Port	Start Date	End Date	Total Duration (hh:mm:ss)	Charging Time (hh:mm:ss)	Energy (kWh)	GHG Savings	Address 1	Fee
UC IRVINE/ LOT 16 MSTB 5-6	2	4/21/2015 6:58	4/21/2015 12:05	5:06:52	3:16:50	10.9531 8	4.6	415 E Peltason Dr	0.1 3
UC IRVINE/ LOT 16 MSTB 3-4	2	4/21/2015 9:34	4/21/2015 11:48	2:14:38	2:14:29	13.9358 6	5.853	415 E Peltason Dr	0
UC IRVINE/ LOT 16 MSTB 3-4	1	4/20/2015 16:04	4/20/2015 16:45	0:41:05	0:40:55	2.18368 5	0.917	415 E Peltason Dr	1.0 3
UC IRVINE/ LOT 16 MSTB 5-6	1	4/20/2015 10:13	4/20/2015 12:00	1:46:50	1:46:40	11.1639 2	4.689	415 E Peltason Dr	0.0 2
UC IRVINE/ LOT 16 MSTB 3-4	2	4/20/2015 9:19	4/20/2015 11:49	2:30:04	2:29:50	13.4539 2	5.651	415 E Peltason Dr	0
UC IRVINE/ LOT 16 MSTB 5-6	2	4/20/2015 7:09	4/20/2015 1:14	4:04:14	3:13:30	10.7689 9	4.523	415 E Peltason Dr	0
UC IRVINE/ LOT 16 MSTB 3-4	1	4/17/2015 9:59	4/17/2015 1:47	1:47:29	1:47:15	8.36176 6	3.512	415 E Peltason Dr	0
UC IRVINE/ LOT 16 MSTB 5-6	2	4/16/2015 8:55	4/16/2015 12:16	3:20:46	3:20:34	11.1751 2	4.694	415 E Peltason Dr	0.4 2

Station Name	Port	Start Date	End Date	Total Duration (hh:mm:ss)	Charging Time (hh:mm:ss)	Energy (kWh)	GHG Savings	Address 1	Fee
UC IRVINE/ LOT 16 MSTB 3-4	2	4/16/2015 9:54	4/16/2015 11:58	2:04:27	2:03:55	6.55308	2.752	415 E Peltason Dr	0
UC IRVINE/ LOT 16 MSTB 1-2	1	4/16/2015 8:33	4/16/2015 11:04	2:31:43	2:12:14	7.74827 6	3.254	415 E Peltason Dr	0
UC IRVINE/ LOT 16 MSTB 3-4	2	4/15/2015 9:43	4/15/2015 13:15	3:31:39	3:31:30	11.1491 5	4.683	415 E Peltason Dr	1.8 9
UC IRVINE/ LOT 16 MSTB 1-2	2	4/15/2015 10:28	4/15/2015 12:19	1:50:49	1:50:34	5.89903	2.478	415 E Peltason Dr	0.4 9
UC IRVINE/ LOT 16 MSTB 1-2	1	4/15/2015 10:08	4/15/2015 11:55	1:46:44	1:41:39	8.79686	3.695	415 E Peltason Dr	0
UC IRVINE/ LOT 16 MSTB 5-6	1	4/15/2015 10:23	4/15/2015 10:52	0:29:09	0:28:49	2.95283 1	1.24	415 E Peltason Dr	0
UC IRVINE/ LOT 16 MSTB 5-6	2	4/15/2015 7:21	4/15/2015 10:49	3:28:26	3:15:44	10.8987 8	4.577	415 E Peltason Dr	0
UC IRVINE/ LOT 16 MSTB 3-4	1	4/14/2015 11:22	4/14/2015 7:33	6:11:14	4:03:06	12.3997 7	5.208	415 E Peltason Dr	8.3 4

Station Name	Port	Start Date	End Date	Total Duration (hh:mm:ss)	Charging Time (hh:mm:ss)	Energy (kWh)	GHG Savings	Address 1	Fee
UC IRVINE/ LOT 16 MSTB 5-6	1	4/14/2015 10:30	4/14/2015 11:52	1:22:26	1:22:15	8.57208 3	3.6	415 E Peltason Dr	0
UC IRVINE/ LOT 16 MSTB 1-2	1	4/14/2015 9:39	4/14/2015 11:51	2:12:24	2:10:50	13.5237 8	5.68	415 E Peltason Dr	0
UC IRVINE/ LOT 16 MSTB 5-6	2	4/14/2015 7:28	4/14/2015 11:19	3:51:43	3:13:05	10.7499 8	4.515	415 E Peltason Dr	0
UC IRVINE/ LOT 16 MSTB 3-4	1	4/14/2015 9:04	4/14/2015 10:56	1:51:46	1:26:34	8.48422 3	3.563	415 E Peltason Dr	0
UC IRVINE/ LOT 16 MSTB 5-6	1	4/13/2015 18:20	4/13/2015 19:28	1:08:40	1:08:19	6.86981 9	2.885	415 E Peltason Dr	0
UC IRVINE/ LOT 16 MSTB 3-4	1	4/13/2015 10:05	4/13/2015 13:25	3:19:35	3:19:25	10.5822 3	4.445	415 E Peltason Dr	2.1 3
UC IRVINE/ LOT 16 MSTB 1-2	1	4/13/2015 10:53	4/13/2015 11:52	0:59:16	0:56:54	5.87838 2	2.469	415 E Peltason Dr	0
UC IRVINE/ LOT 16 MSTB 5-6	2	4/13/2015 6:54	4/13/2015 11:34	4:40:11	3:16:23	10.9271 6	4.589	415 E Peltason Dr	0

Station Name	Port	Start Date	End Date	Total Duration (hh:mm:ss)	Charging Time (hh:mm:ss)	Energy (kWh)	GHG Savings	Address 1	Fee
UC IRVINE/ LOT 16 MSTB 3-4	1	4/10/2015 9:27	4/10/2015 11:50	2:23:12	2:22:49	8.47231 9	3.558	415 E Peltason Dr	0
UC IRVINE/ LOT 16 MSTB 3-4	2	4/9/2015 10:18	4/9/2015 13:15	2:57:47	2:57:40	9.44594 9	3.967	415 E Peltason Dr	1 .9
UC IRVINE/ LOT 16 MSTB 5-6	2	4/9/2015 7:51	4/9/2015 12:40	4:48:35	3:59:06	13.3090 5	5.59	415 E Peltason Dr	1.0 1
UC IRVINE/ LOT 16 MSTB 3-4	1	4/9/2015 9:03	4/9/2015 11:48	2:44:46	2:13:54	7.88992 5	3.314	415 E Peltason Dr	0
UC IRVINE/ LOT 16 MSTB 3-4	1	4/8/2015 9:57	4/8/2015 11:58	2:00:36	1:52:00	8.61891 6	3.62	415 E Peltason Dr	0
UC IRVINE/ LOT 16 MSTB 5-6	1	4/7/2015 10:17	4/7/2015 17 :43	7:26:28	2:20:46	8.67022	3.641	415 E Peltason Dr	8.5 9
UC IRVINE/ LOT 16 MSTB 3-4	2	4/7/2015 10:00	4/7/2015 13:03	3:02:20	3:02:16	9.74315 5	4.092	415 E Peltason Dr	1.58
UC IRVINE/ LOT 16 MSTB 5-6	2	4/7/2015 6:42	4/7/2015 12:06	5:24:14	3:30:39	11.7281 6	4.926	415 E Peltason Dr	0.1 6

Station Name	Port	Start Date	End Date	Total Duration (hh:mm:ss)	Charging Time (hh:mm:ss)	Energy (kWh)	GHG Savings	Address 1	Fee
UC IRVINE/ LOT 16 MSTB 1-2	2	4/7/2015 10:28	4/7/2015 11:57	1:28:55	1:28:45	8.98959 8	3.776	415 E Peltason Dr	0
UC IRVINE/ LOT 16 MSTB 1-2	1	4/7/2015 10:27	4/7/2015 11:56	1:29:17	1:29:05	9.41157 1	3.953	415 E Peltason Dr	0
UC IRVINE/ LOT 16 MSTB 3-4	1	4/7/2015 9:04	4/7/2015 11:52	2:47:24	2:45:05	12.2205 8	5.133	415 E Peltason Dr	0
UC IRVINE/ LOT 16 MSTB 5-6	1	4/6/2015 18:37	4/6/2015 21:00	2:23:24	2:08:30	12.9295 5	5.43	415 E Peltason Dr	0
UC IRVINE/ LOT 16 MSTB 5-6	1	4/6/2015 10:14	4/6/2015 11:59	1:44:46	1:05:14	6.83352 3	2.87	415 E Peltason Dr	0
UC IRVINE/ LOT 16 MSTB 3-4	1	4/6/2015 9:39	4/6/2015 11:39	2:00:38	2:00:24	12.5663 2	5.278	415 E Peltason Dr	0
UC IRVINE/ LOT 16 MSTB 3-4	1	4/4/2015 11:04	4/4/2015 12:55	1:50:22	1:24:59	2.79810 4	1.175	415 E Peltason Dr	1.3 8
UC IRVINE/ LOT 16 MSTB 3-4	1	4/3/2015 9:51	4/3/2015 11:57	2:06:46	1:58:00	7.75705	3.258	415 E Peltason Dr	0

Station Name	Port	Start Date	End Date	Total Duration (hh:mm:ss)	Charging Time (hh:mm:ss)	Energy (kWh)	GHG Savings	Address 1	Fee
UC IRVINE/ LOT 16 MSTB 5-6	1	4/3/2015 10:39	4/3/2015 11:49	1:09:30	1:09:13	7.26793	3.053	415 E Peltason Dr	0
UC IRVINE/ LOT 16 MSTB 3-4	1	4/3/2015 9:50	4/3/2015 9:50	0:00:14	0:00:00	0	0	415 E Peltason Dr	0
UC IRVINE/ LOT 16 MSTB 3-4	1	4/2/2015 9:48	4/2/2015 12:10	2:22:22	2:22:10	7.61698 2	3.199	415 E Peltason Dr	0.2 6
UC IRVINE/ LOT 16 MSTB 1-2	1	4/2/2015 11:07	4/2/2015 11:51	0:43:33	0:43:19	2.33879 6	0.982	415 E Peltason Dr	0
UC IRVINE/ LOT 16 MSTB 3-4	2	4/2/2015 8:12	4/2/2015 11:50	3:37:49	2:09:15	7.51843 6	3.158	415 E Peltason Dr	0
UC IRVINE/ LOT 16 MSTB 5-6	2	4/2/2015 6:51	4/2/2015 11:28	4:36:36	3:31:50	11.7773	4.946	415 E Peltason Dr	0
UC IRVINE/ LOT 16 MSTB 5-6	1	4/1/2015 10:26	4/1/2015 11:57	1:31:36	1:31:24	9.61796 9	4.04	415 E Peltason Dr	0
UC IRVINE/ LOT 16 MSTB 3-4	2	4/1/2015 9:53	4/1/2015 11:57	2:04:03	1:56:29	8.12400 1	3.412	415 E Peltason Dr	0

Station Name	Port	Start Date	End Date	Total Duration (hh:mm:ss)	Charging Time (hh:mm:ss)	Energy (kWh)	GHG Savings	Address 1	Fee
UC IRVINE/ LOT 16 MSTB 5-6	2	4/1/2015 6:49	4/1/2015 11:49	4:59:39	3:47:10	12.6409 5	5.309	415 E Peltason Dr	0
UC IRVINE/ LOT 16 MSTB 5-6	2	3/31/2015 9:43	3/31/2015 12:41	2:58:19	2:58:09	9.51895 8	3.998	415 E Peltason Dr	1.0 5
UC IRVINE/ LOT 16 MSTB 5-6	1	3/31/2015 10:29	3/31/2015 12:01	1:32:30	1:32:21	9.72720 7	4.085	415 E Peltason Dr	0.0 4
UC IRVINE/ LOT 16 MSTB 3-4	2	3/31/2015 9:27	3/31/2015 11:57	2:30:10	2:13:04	8.07087 1	3.39	415 E Peltason Dr	0
UC IRVINE/ LOT 16 MSTB 3-4	1	3/31/2015 10:28	3/31/2015 1:54	1:25:50	1:25:44	4.63944 5	1.949	415 E Peltason Dr	0
UC IRVINE/ LOT 16 MSTB 1-2	2	3/31/2015 7:11	3/31/2015 0:02	2:50:49	1:22:00	2.68241 1	1.127	415 E Peltason Dr	0
UC IRVINE/ LOT 16 MSTB 3-4	1	3/31/2015 9:24	3/31/2015 9:26	0:01:40	0:01:23	0.06563 5	0.028	415 E Peltason Dr	0
UC IRVINE/ LOT 16 MSTB 3-4	2	3/30/2015 10:05	3/30/2015 11:54	1:48:37	1:48:29	5.86292 7	2.462	415 E Peltason Dr	0

Station Name	Port	Start Date	End Date	Total Duration (hh:mm:ss)	Charging Time (hh:mm:ss)	Energy (kWh)	GHG Savings	Address 1	Fee
UC IRVINE/ LOT 16 MSTB 3-4	1	3/30/2015 9:13	3/30/2015 11:55	2:42:46	2:36:55	15.7714 2	6.624	415 E Peltason Dr	0
UC IRVINE/ LOT 16 MSTB 5-6	1	3/30/2015 10:24	3/30/2015 11:52	1:27:48	1:27:35	9.17866 2	3.855	415 E Peltason Dr	0
UC IRVINE/ LOT 16 MSTB 3-4	1	3/26/2015 9:37	3/26/2015 1:54	2:16:47	2:12:40	8.54134 9	3.587	415 E Peltason Dr	0
UC IRVINE/ LOT 16 MSTB 1-2	2	3/26/2015 7:34	3/26/2015 9:16	1:42:48	1:22:34	2.70696 9	1.137	415 E Peltason Dr	0
UC IRVINE/ LOT 16 MSTB 5-6	2	3/25/2015 7:49	3/25/2015 11:58	4:09:09	3:15:05	10.8595 9	4.561	415 E Peltason Dr	0
UC IRVINE/ LOT 16 MSTB 3-4	2	3/25/2015 7:25	3/25/2015 11:54	4:29:14	2:43:41	8.76107 7	3.68	415 E Peltason Dr	0
UC IRVINE/ LOT 16 MSTB 3-4	1	3/25/2015 10:03	3/25/2015 11:49	1:46:19	1:46:04	8.14876 1	3.422	415 E Peltason Dr	0
UC IRVINE/ LOT 16 MSTB 1-2	2	3/25/2015 7:22	3/25/2015 10:01	2:39:39	1:22:50	2.71678 7	1.141	415 E Peltason Dr	0

Station Name	Port	Start Date	End Date	Total Duration (hh:mm:ss)	Charging Time (hh:mm:ss)	Energy (kWh)	GHG Savings	Address 1	Fee
UC IRVINE/ LOT 16 MSTB 3-4	2	3/25/2015 7:08	3/25/2015 7:14	0:06:39	0:06:29	0.34060 5	0.143	415 E Peltason Dr	0
UC IRVINE/ LOT 16 MSTB 5-6	1	3/24/2015 8:45	3/24/2015 12:00	3:15:38	2:54:19	10.5784 2	4.443	415 E Peltason Dr	0.0 2
UC IRVINE/ LOT 16 MSTB 5-6	2	3/24/2015 7:09	3/24/2015 12:00	4:50:45	3:27:40	11.5487 3	4.85	415 E Peltason Dr	0.0 1
UC IRVINE/ LOT 16 MSTB 3-4	1	3/24/2015 10:10	3/24/2015 11:54	1:43:40	1:43:30	5.62356 2	2.362	415 E Peltason Dr	0
UC IRVINE/ LOT 16 MSTB 3-4	2	3/24/2015 8:49	3/24/2015 11:48	2:58:17	2:58:06	13.3702 1	5.615	415 E Peltason Dr	0
UC IRVINE/ LOT 16 MSTB 1-2	2	3/24/2015 7:22	3/24/2015 10:37	3:14:38	1:22:29	2.69167 4	1.131	415 E Peltason Dr	0
UC IRVINE/ LOT 16 MSTB 5-6	1	3/23/2015 10:30	3/23/2015 12:00	1:30:12	1:29:55	9.48907 9	3.985	415 E Peltason Dr	0.0 1
UC IRVINE/ LOT 16 MSTB 3-4	1	3/23/2015 10:03	3/23/2015 11:54	1:51:10	1:46:29	11.1480 7	4.682	415 E Peltason Dr	0

Station Name	Port	Start Date	End Date	Total Duration (hh:mm:ss)	Charging Time (hh:mm:ss)	Energy (kWh)	GHG Savings	Address 1	Fee
UC IRVINE/ LOT 16 MSTB 1-2	1	3/23/2015 9:00	3/23/2015 11:52	2:51:54	2:19:05	8.38226 8	3.521	415 E Peltason Dr	0
UC IRVINE/ LOT 16 MSTB 5-6	2	3/23/2015 7:31	3/23/2015 11:23	3:51:40	3:12:40	10.7229	4.504	415 E Peltason Dr	0
UC IRVINE/ LOT 16 MSTB 3-4	1	3/20/2015 9:27	3/20/2015 12:34	3:06:30	3:06:20	9.91099 2	4.163	415 E Peltason Dr	0.8 5
UC IRVINE/ LOT 16 MSTB 5-6	1	3/20/2015 10:25	3/20/2015 11:58	1:32:44	1:32:39	9.66041 8	4.057	415 E Peltason Dr	0
UC IRVINE/ LOT 16 MSTB 5-6	2	3/20/2015 8:52	3/20/2015 11:43	2:50:47	2:23:00	7.74686 9	3.254	415 E Peltason Dr	0
UC IRVINE/ LOT 16 MSTB 3-4	2	3/20/2015 7:24	3/20/2015 11:33	4:08:58	2:39:40	8.50407 3	3.572	415 E Peltason Dr	0
UC IRVINE/ LOT 16 MSTB 1-2	2	3/20/2015 9:22	3/20/2015 10:05	0:43:21	0:42:59	4.36649 6	1.834	415 E Peltason Dr	0
UC IRVINE/ LOT 16 MSTB 3-4	1	3/19/2015 10:05	3/19/2015 12:34	2:29:46	2:29:25	7.95265 8	3.34	415 E Peltason Dr	0.8 7

Station Name	Port	Start Date	End Date	Total Duration (hh:mm:ss)	Charging Time (hh:mm:ss)	Energy (kWh)	GHG Savings	Address 1	Fee
UC IRVINE/ LOT 16 MSTB 1-2	1	3/19/2015 9:25	3/19/2015 11:44	2:19:28	2:19:05	8.14954	3.423	415 E Peltason Dr	0
UC IRVINE/ LOT 16 MSTB 3-4	2	3/19/2015 7:28	3/19/2015 10:48	3:19:54	2:44:46	8.83630 5	3.711	415 E Peltason Dr	0
UC IRVINE/ LOT 16 MSTB 5-6	2	3/19/2015 5:51	3/19/2015 10:47	4:56:21	3:33:30	11.8737 4	4.987	415 E Peltason Dr	0
UC IRVINE/ LOT 16 MSTB 5-6	2	3/18/2015 13:22	3/18/2015 14:15	0:53:57	0:53:35	2.97886 3	1.251	415 E Peltason Dr	1.3 5
UC IRVINE/ LOT 16 MSTB 3-4	2	3/18/2015 7:20	3/18/2015 11:51	4:31:03	2:24:05	7.69095	3.23	415 E Peltason Dr	0
UC IRVINE/ LOT 16 MSTB 1-2	1	3/18/2015 9:29	3/18/2015 11:44	2:15:50	2:00:50	7.53959 8	3.167	415 E Peltason Dr	0
UC IRVINE/ LOT 16 MSTB 5-6	2	3/18/2015 8:56	3/18/2015 10:50	1:53:41	1:53:30	6.31695 4	2.653	415 E Peltason Dr	0
UC IRVINE/ LOT 16 MSTB 3-4	1	3/17/2015 10:51	3/17/2015 13:01	2:09:16	2:09:00	6.80711 7	2.859	415 E Peltason Dr	1.5 3

Station Name	Port	Start Date	End Date	Total Duration (hh:mm:ss)	Charging Time (hh:mm:ss)	Energy (kWh)	GHG Savings	Address 1	Fee
UC IRVINE/ LOT 16 MSTB 5-6	2	3/17/2015 7:28	3/17/2015 1:57	4:29:07	3:03:44	10.2249 7	4.294	415 E Peltason Dr	0
UC IRVINE/ LOT 16 MSTB 5-6	1	3/17/2015 10:07	3/17/2015 11:50	1:43:19	1:43:00	10.7785 2	4.527	415 E Peltason Dr	0
UC IRVINE/ LOT 16 MSTB 3-4	2	3/17/2015 7:28	3/17/2015 1:38	4:09:16	2:46:50	8.97005 7	3.767	415 E Peltason Dr	0
UC IRVINE/ LOT 16 MSTB 1-2	1	3/17/2015 7:38	3/17/2015 10:32	2:53:42	2:13:25	8.67159	3.642	415 E Peltason Dr	0
UC IRVINE/ LOT 16 MSTB 1-2	2	3/17/2015 7:09	3/17/2015 8:33	1:24:04	1:22:19	2.68557 9	1.128	415 E Peltason Dr	0
UC IRVINE/ LOT 16 MSTB 5-6	2	3/16/2015 9:14	3/16/2015 12:05	2:51:21	2:51:04	9.52805 9	4.002	415 E Peltason Dr	0.14
UC IRVINE/ LOT 16 MSTB 3-4	2	3/16/2015 9:34	3/16/2015 11:54	2:20:18	2:15:25	13.9323 2	5.852	415 E Peltason Dr	0
UC IRVINE/ LOT 16 MSTB 3-4	2	3/13/2015 9:21	3/13/2015 11:46	2:25:00	2:09:04	7.74365 3	3.252	415 E Peltason Dr	0

Station Name	Port	Start Date	End Date	Total Duration (hh:mm:ss)	Charging Time (hh:mm:ss)	Energy (kWh)	GHG Savings	Address 1	Fee
UC IRVINE/ LOT 16 MSTB 5-6	1	3/12/2015 10:46	3/12/2015 12:56	2:09:48	2:09:39	13.5264 4	5.681	415 E Peltason Dr	1.42
UC IRVINE/ LOT 16 MSTB 3-4	1	3/12/2015 10:04	3/12/2015 12:29	2:24:58	2:24:49	7.65072 2	3.213	415 E Peltason Dr	0.75
UC IRVINE/ LOT 16 MSTB 1-2	1	3/12/2015 9:44	3/12/2015 11:53	2:09:07	2:05:45	8.84498 8	3.715	415 E Peltason Dr	0
UC IRVINE/ LOT 16 MSTB 5-6	2	3/12/2015 7:25	3/12/2015 11:42	4:16:59	3:14:50	10.8408 9	4.553	415 E Peltason Dr	0
UC IRVINE/ LOT 16 MSTB 1-2	2	3/12/2015 7:43	3/12/2015 9:34	1:51:36	1:22:44	2.71414 1	1.14	415 E Peltason Dr	0
UC IRVINE/ LOT 16 MSTB 1-2	1	3/11/2015 9:32	3/11/2015 11:53	2:20:50	2:16:59	10.4125 5	4.373	415 E Peltason Dr	0
UC IRVINE/ LOT 16 MSTB 5-6	2	3/11/2015 7:15	3/11/2015 11:53	4:38:03	3:19:05	11.0778 4	4.653	415 E Peltason Dr	0
UC IRVINE/ LOT 16 MSTB 5-6	1	3/11/2015 10:14	3/11/2015 11:44	1:30:13	1:30:04	9.41070 8	3.952	415 E Peltason Dr	0

Station Name	Port	Start Date	End Date	Total Duration (hh:mm:ss)	Charging Time (hh:mm:ss)	Energy (kWh)	GHG Savings	Address 1	Fee
UC IRVINE/ LOT 16 MSTB 5-6	2	3/10/2015 7:41	3/10/2015 12:03	4:21:58	3:26:44	11.5076 7	4.833	415 E Peltason Dr	0.09
UC IRVINE/ LOT 16 MSTB 1-2	1	3/10/2015 10:41	3/10/2015 11:59	1:17:28	1:17:09	4.11170 4	1.727	415 E Peltason Dr	0
UC IRVINE/ LOT 16 MSTB 5-6	1	3/10/2015 10:20	3/10/2015 11:59	1:39:36	1:39:29	10.2935 7	4.323	415 E Peltason Dr	0
UC IRVINE/ LOT 16 MSTB 3-4	1	3/10/2015 10:14	3/10/2015 11:59	1:44:32	1:42:55	5.44115 6	2.285	415 E Peltason Dr	0
UC IRVINE/ LOT 16 MSTB 3-4	2	3/10/2015 9:27	3/10/2015 11:54	2:26:59	2:20:19	8.11405 2	3.408	415 E Peltason Dr	0
UC IRVINE/ LOT 16 MSTB 1-2	2	3/10/2015 7:39	3/10/2015 10:02	2:22:15	1:23:04	2.72095 9	1.143	415 E Peltason Dr	0
UC IRVINE/ LOT 16 MSTB 5-6	2	3/9/2015 8:20	3/9/2015 11:57	3:36:53	3:36:35	12.0638 2	5.067	415 E Peltason Dr	0
UC IRVINE/ LOT 16 MSTB 3-4	1	3/9/2015 9:58	3/9/2015 11:52	1:53:42	1:53:25	11.9265 9	5.009	415 E Peltason Dr	0

Station Name	Port	Start Date	End Date	Total Duration (hh:mm:ss)	Charging Time (hh:mm:ss)	Energy (kWh)	GHG Savings	Address 1	Fee
UC IRVINE/ LOT 16 MSTB 3-4	2	3/9/2015 9:45	3/9/2015 11:47	2:01:58	2:01:49	8.43137 5	3.541	415 E Peltason Dr	0
UC IRVINE/ LOT 16 MSTB 5-6	1	3/9/2015 9:56	3/9/2015 11:09	1:13:08	0:21:04	2.05203 7	0.862	415 E Peltason Dr	0
UC IRVINE/ LOT 16 MSTB 1-2	1	3/6/2015 9:09	3/6/2015 11:49	2:40:11	2:18:30	7.97753 2	3.351	415 E Peltason Dr	0
UC IRVINE/ LOT 16 MSTB 3-4	2	3/6/2015 7:28	3/6/2015 11:47	4:18:34	2:30:30	8.02366 3	3.37	415 E Peltason Dr	0
UC IRVINE/ LOT 16 MSTB 5-6	1	3/6/2015 9:46	3/6/2015 11:45	1:59:06	1:58:54	12.3693	5.195	415 E Peltason Dr	0
UC IRVINE/ LOT 16 MSTB 1-2	1	3/5/2015 9:47	3/5/2015 11:53	2:06:00	2:02:34	8.23870 8	3.46	415 E Peltason Dr	0
UC IRVINE/ LOT 16 MSTB 5-6	1	3/5/2015 7:40	3/5/2015 11:47	4:06:54	3:26:11	11.4526 5	4.81	415 E Peltason Dr	0
UC IRVINE/ LOT 16 MSTB 3-4	2	3/5/2015 7:23	3/5/2015 10:59	3:35:47	0:38:35	1.96112 9	0.824	415 E Peltason Dr	0

Station Name	Port	Start Date	End Date	Total Duration (hh:mm:ss)	Charging Time (hh:mm:ss)	Energy (kWh)	GHG Savings	Address 1	Fee
UC IRVINE/ LOT 16 MSTB 5-6	2	3/5/2015 7:23	3/5/2015 9:40	2:16:11	1:23:49	2.76293 2	1.16	415 E Peltason Dr	0
UC IRVINE/ LOT 16 MSTB 5-6	1	3/4/2015 10:11	3/4/2015 11:58	1:47:13	1:47:00	11.0629 9	4.646	415 E Peltason Dr	0
UC IRVINE/ LOT 16 MSTB 3-4	2	3/4/2015 9:14	3/4/2015 11:57	2:43:39	2:43:24	15.7489 1	6.615	415 E Peltason Dr	0
UC IRVINE/ LOT 16 MSTB 1-2	1	3/4/2015 9:34	3/4/2015 11:51	2:16:56	2:14:59	8.19747 4	3.443	415 E Peltason Dr	0
UC IRVINE/ LOT 16 MSTB 5-6	2	3/4/2015 7:25	3/4/2015 11:42	4:17:28	3:29:40	11.6731 7	4.903	415 E Peltason Dr	0
UC IRVINE/ LOT 16 MSTB 3-4	1	3/4/2015 9:19	3/4/2015 11:30	2:11:46	2:11:34	7.15686 3	3.006	415 E Peltason Dr	0
UC IRVINE/ LOT 16 MSTB 5-6	2	3/4/2015 7:24	3/4/2015 7:25	0:00:30	0:00:00	0	0	415 E Peltason Dr	0
UC IRVINE/ LOT 16 MSTB 5-6	1	3/3/2015 16:48	3/3/2015 16:48	0:00:09	0:00:00	0	0	415 E Peltason Dr	0

Station Name	Port	Start Date	End Date	Total Duration (hh:mm:ss)	Charging Time (hh:mm:ss)	Energy (kWh)	GHG Savings	Address 1	Fee
UC IRVINE/ LOT 16 MSTB 5-6	1	3/3/2015 16:48	3/3/2015 16:48	0:00:18	0:00:00	0	0	415 E Peltason Dr	0
UC IRVINE/ LOT 16 MSTB 5-6	1	3/3/2015 9:17	3/3/2015 13:34	4:16:41	2:44:35	13.0573 3	5.484	415 E Peltason Dr	2.37
UC IRVINE/ LOT 16 MSTB 5-6	2	3/3/2015 13:34	3/3/2015 13:36	0:01:59	0:00:00	0	0	415 E Peltason Dr	0
UC IRVINE/ LOT 16 MSTB 5-6	2	3/3/2015 7:23	3/3/2015 12:03	4:39:23	3:42:05	12.3645 4	5.193	415 E Peltason Dr	0.08
UC IRVINE/ LOT 16 MSTB 3-4	1	3/3/2015 9:56	3/3/2015 12:00	2:03:54	2:03:41	6.51556 2	2.737	415 E Peltason Dr	0
UC IRVINE/ LOT 16 MSTB 1-2	1	3/3/2015 10:18	3/3/2015 11:57	1:38:54	1:38:35	10.4084 8	4.372	415 E Peltason Dr	0
UC IRVINE/ LOT 16 MSTB 3-4	2	3/3/2015 8:43	3/3/2015 11:52	3:08:40	2:59:06	11.3978	4.787	415 E Peltason Dr	0
UC IRVINE/ LOT 16 MSTB 3-4	1	3/2/2015 19:13	3/2/2015 19:15	0:01:59	0:00:00	0	0	415 E Peltason Dr	0

Station Name	Port	Start Date	End Date	Total Duration (hh:mm:ss)	Charging Time (hh:mm:ss)	Energy (kWh)	GHG Savings	Address 1	Fee
UC IRVINE/ LOT 16 MSTB 3-4	2	3/2/2015 17:31	3/2/2015 19:13	1:42:04	1:41:44	9.97452 6	4.189	415 E Peltason Dr	0.71
UC IRVINE/ LOT 16 MSTB 5-6	1	3/2/2015 7:37	3/2/2015 12:15	4:38:04	3:37:16	12.0684 6	5.069	415 E Peltason Dr	0.38
UC IRVINE/ LOT 16 MSTB 3-4	2	3/2/2015 10:04	3/2/2015 12:12	2:07:28	1:45:05	10.9899 1	4.616	415 E Peltason Dr	0.31
UC IRVINE/ LOT 16 MSTB 5-6	2	3/2/2015 6:59	3/2/2015 11:34	4:35:30	2:42:30	8.61400 2	3.618	415 E Peltason Dr	0
UC IRVINE/ LOT 16 MSTB 3-4	1	2/27/2015 9:41	2/27/2015 12:19	2:38:39	2:26:35	8.54549 5	3.589	415 E Peltason Dr	0.49
UC IRVINE/ LOT 16 MSTB 5-6	2	2/27/2015 10:07	2/27/2015 11:59	1:52:26	1:52:04	11.8043 4	4.958	415 E Peltason Dr	0
UC IRVINE/ LOT 16 MSTB 3-4	2	2/27/2015 10:36	2/27/2015 11:57	1:20:56	1:20:40	4.34723 6	1.826	415 E Peltason Dr	0
UC IRVINE/ LOT 16 MSTB 5-6	1	2/27/2015 7:16	2/27/2015 10:16	3:00:10	2:38:35	8.36229 3	3.512	415 E Peltason Dr	0

Station Name	Port	Start Date	End Date	Total Duration (hh:mm:ss)	Charging Time (hh:mm:ss)	Energy (kWh)	GHG Savings	Address 1	Fee
UC IRVINE/ LOT 16 MSTB 3-4	1	2/26/2015 8:50	2/26/2015 11:25	2:35:43	2:31:50	8.85770 8	3.72	415 E Peltason Dr	0
UC IRVINE/ LOT 16 MSTB 5-6	1	2/26/2015 7:29	2/26/2015 10:57	3:27:50	3:25:25	11.4125 9	4.793	415 E Peltason Dr	0
UC IRVINE/ LOT 16 MSTB 5-6	1	2/26/2015 7:28	2/26/2015 7:29	0:00:41	0:00:00	0	0	415 E Peltason Dr	0
UC IRVINE/ LOT 16 MSTB 3-4	2	2/25/2015 18:31	2/25/2015 20:46	2:14:46	2:09:15	6.82795 5	2.868	415 E Peltason Dr	0
UC IRVINE/ LOT 16 MSTB 5-6	2	2/25/2015 10:14	2/25/2015 11:46	1:31:56	1:31:30	9.60799 5	4.035	415 E Peltason Dr	0
UC IRVINE/ LOT 16 MSTB 3-4	1	2/25/2015 9:39	2/25/2015 11:46	2:06:30	2:06:09	11.6378 4	4.888	415 E Peltason Dr	0
UC IRVINE/ LOT 16 MSTB 5-6	1	2/25/2015 7:15	2/25/2015 11:35	4:20:32	3:25:35	11.4184	4.796	415 E Peltason Dr	7.6
UC IRVINE/ LOT 16 MSTB 1-2	1	2/25/2015 10:07	2/25/2015 10:45	0:38:23	0:38:10	3.86513 2	1.623	415 E Peltason Dr	0

Station Name	Port	Start Date	End Date	Total Duration (hh:mm:ss)	Charging Time (hh:mm:ss)	Energy (kWh)	GHG Savings	Address 1	Fee
UC IRVINE/ LOT 16 MSTB 1-2	1	2/23/2015 12:05	2/23/2015 7:21	5:15:57	5:15:21	14.0768 1	5.912	415 E Peltason Dr	13.16
UC IRVINE/ LOT 16 MSTB 5-6	2	2/19/2015 10:30	2/19/2015 11:59	1:29:13	1:28:55	9.31557 8	3.913	415 E Peltason Dr	2.6
UC IRVINE/ LOT 16 MSTB 3-4	2	2/4/2015 9:04	2/4/2015 11:39	2:34:32	2:34:00	16.0288	6.732	415 E Peltason Dr	4.51
UC IRVINE/ LOT 16 MSTB 3-4	2	2/2/2015 13:52	2/2/2015 16:49	2:56:56	0:03:22	0.01305 8	0.005	415 E Peltason Dr	7.37
UC IRVINE/ LOT 16 MSTB 5-6	2	1/29/2015 12:10	1/29/2015 16:16	4:06:17	3:03:20	9.82931 8	4.128	415 E Peltason Dr	10.26
UC IRVINE/ LOT 16 MSTB 3-4	2	1/28/2015 10:17	1/28/2015 12:21	2:04:11	0:02:49	0.01394 9	0.006	415 E Peltason Dr	3.89
UC IRVINE/ LOT 16 MSTB 1-2	1	1/27/2015 17:48	1/27/2015 17:50	0:01:59	0:00:00	0	0	415 E Peltason Dr	0
UC IRVINE/ LOT 16 MSTB 1-2	2	1/27/2015 8:08	1/27/2015 7:48	9:39:38	5:30:36	35.1192 4	14.75	415 E Peltason Dr	21.27

Station Name	Port	Start Date	End Date	Total Duration (hh:mm:ss)	Charging Time (hh:mm:ss)	Energy (kWh)	GHG Savings	Address 1	Fee
UC IRVINE/ LOT 16 MSTB 3-4	2	1/14/2015 13:06	1/14/2015 16:44	3:38:11	3:10:30	14.0026 5	5.881	415 E Peltason Dr	9.05
UC IRVINE/ LOT 16 MSTB 5-6	2	1/12/2015 7:59	1/12/2015 12:24	4:25:13	2:14:14	8.29439 5	3.484	415 E Peltason Dr	8.01
UC IRVINE/ LOT 16 MSTB 5-6	1	1/12/2015 9:43	1/12/2015 10:47	1:03:46	0:26:14	1.86369 1	0.783	415 E Peltason Dr	1.83
UC IRVINE/ LOT 16 MSTB 1-2	1	1/7/2015 8:04	1/7/2015 11:22	3:17:21	3:12:50	14.1816 7	5.956	415 E Peltason Dr	5.73
UC IRVINE/ LOT 16 MSTB 5-6	2	1/7/2015 8:09	1/7/2015 11:38	3:29:18	2:29:14	9.48813 3	3.985	415 E Peltason Dr	6.05

Source: ChargePoint

Table 4 below shows the charging data collected for the Irvine Train Station charger.

Table 4: Irvine Train Station - Charging Session Data

Station Name	Port	Start Date	End Date	Total Duration (hh:mm:ss)	Charging Time (hh:mm:ss)	Energy (kWh)	GHG Savings	Address 1	Fee
UC IRVINE/ ITC APEP 05	1	6/25/2015 16:31	6/30/2015 8:25	111:54:10	1:53:45	5.230952	2.197	15215 Barranca Pkwy	0
UC IRVINE/ ITC APEP 05	1	6/24/2015 17:05	6/25/2015 8:29	15:23:43	1:31:00	3.954475	1.661	15215 Barranca Pkwy	0
UC IRVINE/ ITC APEP 05	2	6/23/2015 17:01	6/24/2015 8:28	15:27:42	1:49:14	4.981786	2.092	15215 Barranca Pkwy	0
UC IRVINE/ ITC APEP 05	1	6/23/2015 16:44	6/24/2015 7:34	14:49:31	0:43:25	1.416125	0.595	15215 Barranca Pkwy	0
UC IRVINE/ ITC APEP 06	1	6/23/2015 13:54	6/23/2015 13:55	0:00:23	0:00:00	0	0	15215 Barranca Pkwy	0
UC IRVINE/ ITC APEP 06	1	6/23/2015 13:54	6/23/2015 13:54	0:00:31	0:00:00	0	0	15215 Barranca Pkwy	0
UC IRVINE/ ITC APEP 06	1	6/23/2015 13:45	6/23/2015 13:46	0:00:28	0:00:00	0	0	15215 Barranca Pkwy	0
UC IRVINE/ ITC APEP 06	1	6/23/2015 13:44	6/23/2015 13:45	0:00:45	0:00:00	0	0	15215 Barranca Pkwy	0

Station Name	Port	Start Date	End Date	Total Duration (hh:mm:ss)	Charging Time (hh:mm:ss)	Energy (kWh)	GHG Savings	Address 1	Fee
UC IRVINE/ ITC APEP 06	1	6/23/2015 13:43	6/23/2015 13:43	0:00:23	0:00:00	0	0	15215 Barranca Pkvw	0
UC IRVINE/ ITC APEP 06	1	6/22/2015 17:47	6/22/201 517:49	0:02:00	0:00:00	0	0	15215 Barranca Pkwy	0
UC IRVINE/ ITC APEP OS	2	6/22/2015 17:46	6/23/2015 7:52	14:06:03	1:45:30	4.946205	2.077	15215 Barranca Pkwy	0
UC IRVINE/ ITC APEP 06	1	6/22/2015 17:44	6/22/201 517:46	0:02:00	0:00:00	0	0	15215 Barranca Pkwy	0
UC IRVINE/ ITC APEP OS	2	6/22/2015 16:45	6/22/2015 17:45	1:00:31	0:44:14	1.447248	0.608	15215 Barranca Pkwy	0
UC IRVINE/ ITC APEP 06	1	6/22/2015 15:44	6/22/2015 15:46	0:01:59	0:00:00	0	0	15215 Barranca Pkwy	0
UC IRVINE/ ITC APEP 05	2	6/22/2015 9:01	6/22/2015 9:03	0:02:01	0:00:00	0	0	15215 Barranca Pkwy	0
UC IRVINE/ ITC APEP OS	2	6/19/2015 17:40	6/22/2015 7:56	62:16:31	2:20:45	6.804209	2.858	15215 Barranca Pkwy	0

Station Name	Port	Start Date	End Date	Total Duration (hh:mm:ss)	Charging Time (hh:mm:ss)	Energy (kWh)	GHG Savings	Address 1	Fee
UC IRVINE/ ITC APEP 06	1	6/19/2015 17:39	6/19/2015 17:41	0:02:00	0:00:00	0	0	15215 Barranca Pkwy	0
UC IRVINE/ ITC APEP OS	1	6/19/2015 16:29	6/23/2015 8:23	87:53:57	1:47:24	4.897126	2.057	15215 Barranca Pkwy	0
UC IRVINE/ ITC APEP 06	1	6/18/2015 17:58	6/18/2015 18:00	0:01:59	0:00:00	0	0	15215 Barranca Pkwy	0
UC IRVINE/ ITC APEP 06	1	6/18/2015 17:54	6/18/2015 17:56	0:01:59	0:00:00	0	0	15215 Barranca Pkwy	0
UC IRVINE/ ITC APEP OS	1	6/18/2015 16:56	6/19/2015 8:31	15:34:56	2:46:35	8.136193	3.417	15215 Barranca Pkwy	0
UC IRVINE/ ITC APEP OS	1	6/18/2015 8:25	6/18/2015 8:36	0:11:13	0:10:59	0.594735	0.25	15215 Barranca Pkwy	0
UC IRVINE/ ITC APEP OS	1	6/18/2015 8:23	6/18/2015 8:25	0:02:00	0:00:00	0	0	15215 Barranca Pkwy	0
UC IRVINE/ ITC APEP 06	1	6/18/2015 8:22	6/18/2015 8:24	0:02:01	0:00:00	0	0	15215 Barranca Pkwy	0

Station Name	Port	Start Date	End Date	Total Duration (hh:mm:ss)	Charging Time (hh:mm:ss)	Energy (kWh)	GHG Savings	Address 1	Fee
UC IRVINE/ ITC APEP 06	1	6/17/2015 17:04	6/17/201 5 17:06	0:02:00	0:00:00	0	0	15215 Barranca Pkwy	0
UC IRVINE/ ITC APEP OS	1	5/21/2015 18:13	5/28/201 5 18:48	168:35:23	1:55:30	5.431284	2.281	15215 Barranca Pkwy	0
UC IRVINE/ ITC APEP 06	1	5/21/2015 17:18	5/27/201 5 8:14	134:56:07	1:44:20	4.72518	1.985	15215 Barranca Pkwy	0
UC IRVINE/ ITC APEP 06	1	5/21/2015 17:17	5/21/201 5 17:18	0:00:43	0:00:00	0	0	15215 Barranca Pkwy	0
UC IRVINE/ ITC APEP OS	1	5/20/2015 17:23	5/21/201 5 8:10	14:47:33	2:03:53	5.716114	2.401	15215 Barranca Pkwy	0
UC IRVINE/ ITC APEP 06	1	5/20/2015 16:45	5/20/201 5 16:47	0:02:00	0:00:00	0	0	15215 Barranca Pkwy	0
UC IRVINE/ ITC APEP 06	2	5/19/2015 17:23	5/20/201 5 8:12	14:49:11	1:38:49	4.285715	1.8	15215 Barranca Pkwy	0
UC IRVINE/ ITC APEP OS	1	5/19/2015 15:51	5/20/201 5 9:59	18:08:50	2:14:07	7.157233	3.006	15215 Barranca Pkwy	0

Station Name	Port	Start Date	End Date	Total Duration (hh:mm:ss)	Charging Time (hh:mm:ss)	Energy (kWh)	GHG Savings	Address 1	Fee
UC IRVINE/ ITC APEP 06	2	5/18/2015 17:18	5/19/201 5 8:10	14:52:10	1:49:24	5.003206	2.101	15215 Barranca Pkwy	0
UC IRVINE/ ITC APEP OS	1	5/18/2015 16:43	5/19/201 5 7:27	14:43:16	0:55:59	2.22002	0.932	15215 Barranca Pkwy	0
UC IRVINE/ ITC APEP OS	1	5/18/2015 15:17	5/18/201 5 16:16	0:59:02	0:58:34	2.110924	0.887	15215 Barranca Pkwy	0
UC IRVINE/ ITCAPEP 06	1	5/16/2015 17:27	5/18/201 5 16:36	47:08:44	1:42:49	4.608242	1.935	15215 Barranca Pkwy	0
UC IRVINE/ ITC APEP 06	2	5/15/2015 16:48	5/18/201 5 8:14	63:26:21	1:49:25	4.82694	2.027	15215 Barranca Pkwy	0
UC IRVINE/ ITC APEP OS	1	5/15/2015 16:44	5/17/201 5 17:44	48:59:59	0:27:28	1.328313	0.558	15215 Barranca Pkwy	0
UC IRVINE/ ITC APEP 06	2	5/14/2015 17:16	5/15/201 5 8:14	14:57:26	1:39:04	3.978898	1.671	15215 Barranca Pkwy	0
UC IRVINE/ ITC APEP OS	1	5/14/2015 16:44	5/15/201 5 7:28	14:43:10	0:53:18	1.712261	0.719	15215 Barranca Pkwy	0

Station Name	Port	Start Date	End Date	Total Duration (hh:mm:ss)	Charging Time (hh:mm:ss)	Energy (kWh)	GHG Savings	Address 1	Fee
UC IRVINE/ ITC APEP OS	1	5/14/2015 12:14	5/14/2015 12:16	0:02:00	0:00:00	0	0	15215 Barranca Pkwy	0
UC IRVINE/ ITC APEP 06	2	5/13/2015 17:22	5/14/2015 5 7:59	14:36:43	1:45:29	4.833546	2.03	15215 Barranca Pkwy	0
UC IRVINE/ ITC APEP 05	1	5/12/2015 16:45	5/13/2015 5 16:53	24:07:43	0:41:23	1.332613	0.56	15215 Barranca Pkwy	0
UC IRVINE/ ITC APEP 06	1	5/11/2015 17:48	5/13/2015 5 16:55	47:06:31	1:47:50	4.848638	2.036	15215 Barranca Pkwy	0
UC IRVINE/ ITC APEP 06	2	5/11/2015 17:15	5/13/2015 5 8:29	39:13:19	2:29:00	7.100298	2.982	15215 Barranca Pkwy	0
UC IRVINE/ ITC APEP 05	1	5/11/2015 16:45	5/12/2015 5 7:26	14:41:45	0:45:43	1.567647	0.658	15215 Barranca Pkwy	0
UC IRVINE/ ITC APEP OS	1	5/9/2015 17:49	5/11/2015 5 7:25	37:36:01	1:48:05	4.913232	2.064	15215 Barranca Pkwy	0
UC IRVINE/ ITCAPEP OS	1	5/8/2015 6:47	5/9/2015 11:52	19:04:46	0:42:14	1.266773	0.532	15215 Barranca Pkwy	0

Station Name	Port	Start Date	End Date	Total Duration (hh:mm:ss)	Charging Time (hh:mm:ss)	Energy (kWh)	GHG Savings	Address 1	Fee
UC IRVINE/ ITC APEP 06	1	5/7/2015 7:59	5/11/201 5 7:51	85:52:23	2:16:20	6.336118	2.661	15215 Barranca Pkwy	0
UC IRVINE/ ITC APEP 06	2	5/7/2015 7:19	5/11/201 5 9:14	87:54:32	2:02:44	5.904526	2.48	15215 Barranca Pkwy	0
UC IRVINE/ ITC APEP 05	2	5/7/2015 16:46	5/9/2015 11:51	43:04:50	2:24:59	2.246806	0.944	15215 Barranca Pkwy	0
UC IRVINE/ ITC APEP 05	1	5/7/2015 16:45	5/8/2015 7:23	14:38:04	0:43:18	1.299902	0.546	15215 Barranca Pkwy	0
UC IRVINE/ ITC APEP 06	2	5/7/2015 7:52	5/7/2015 7:54	0:02:01	0:00:00	0	0	15215 Barranca Pkwy	0
UC IRVINE/ ITC APEP 06	1	5/6/2015 7:21	5/7/2015 8:13	14:51:47	1:38:35	4.25483	1.787	15215 Barranca Pkwy	0
UC IRVINE/ ITC APEP 05	1	5/6/2015 16:45	5/7/2015 7:25	14:39:22	0:46:44	1.345775	0.565	15215 Barranca Pkwy	0
UC IRVINE/ ITCAPEP 06	1	5/5/2015 7:20	5/6/2015 8:37	15:16:44	1:32:24	3.936545	1.653	15215 Barranca Pkwy	0

Station Name	Port	Start Date	End Date	Total Duration (hh:mm:ss)	Charging Time (hh:mm:ss)	Energy (kWh)	GHG Savings	Address 1	Fee
UC IRVINE/ ITC APEP 05	1	5/5/2015 16:44	5/6/2015 7:25	14:41:25	0:50:43	1.560635	0.655	15215 Barranca Pkwy	0
UC IRVINE/ ITC APEP 06	1	5/4/2015 17:19	5/5/2015 8:11	14:52:26	1:40:35	4.315757	1.813	15215 Barranca Pkwy	0
UC IRVINE/ ITC APEP 05-	2	5/4/2015 7:02	5/7/2015 8:45	63:42:50	2:25:25	7.065451	2.967	15215 Barranca Pkwy	0
UC IRVINE/ ITC APEP 05	1	5/4/2015 6:45	5/5/2015 7:27	14:42:28	0:48:55	1.474125	0.619	15215 Barranca Pkwy	0
UC IRVINE/ ITC APEP 05	1	5/1/2015 16:44	5/4/2015 7:28	62:44:38	0:44:59	1.552306	0.652	15215 Barranca Pkwy	0
UC IRVINE/ ITC APEP 06	1	5/1/2015 12:19	5/4/2015 8:14	67:55:25	1:46:59	4.825795	2.027	15215 Barranca Pkwy	0
UC IRVINE/ ITC APEP 06	1	4/30/2015 17:18	5/1/2015 8:10	14:52:53	2:03:19	5.837176	2.452	15215 Barranca Pkwy	0
UC IRVINE/ ITC APEP 05	1	4/30/2015 16:44	5/1/2015 7:26	14:41:56	0:43:29	1.448835	0.609	15215 Barranca Pkwy	0

Station Name	Port	Start Date	End Date	Total Duration (hh:mm:ss)	Charging Time (hh:mm:ss)	Energy (kWh)	GHG Savings	Address 1	Fee
UC IRVINE/ ITC APEP 06	2	4/30/2015 15:52	5/7/2015 7:52	159:59:18	1:49:15	4.928113	2.07	15215 Barranca Pkwy	0
UC IRVINE/ ITC APEP 06	2	4/29/2015 17:49	4/30/2015 7:54	14:04:46	1:40:20	4.5089	1.894	15215 Barranca Pkwy	0
UC IRVINE/ ITC APEP 05	1	4/29/2015 16:42	4/30/2015 7:24	14:41:54	0:47:19	1.660669	0.697	15215 Barranca Pkwy	0
UC IRVINE/ ITC APEP 05	2	4/28/2015 17:51	5/4/2015 0:33	136:42:05	2:09:49	6.287613	2.641	15215 Barranca Pkwy	0
UC IRVINE/ ITC APEP 06	1	4/28/2015 17:22	4/30/2015 8:56	39:34:58	2:04:05	5.839355	2.453	15215 Barranca Pkwy	0
UC IRVINE/ ITC APEP 05	1	4/28/2015 16:44	4/29/2015 7:28	14:43:32	1:18:25	3.29883	1.386	15215 Barranca Pkwy	0
UC IRVINE/ ITC APEP 06	2	4/28/2015 14:27	4/29/2015 7:52	17:24:57	1:15:09	3.090848	1.298	15215 Barranca Pkwy	0
UC IRVINE/ ITC APEP 06	2	4/28/2015 8:00	4/28/2015 8:01	0:00:06	0:00:00	0	0	15215 Barranca Pkwy	0

Station Name	Port	Start Date	End Date	Total Duration (hh:mm:ss)	Charging Time (hh:mm:ss)	Energy (kWh)	GHG Savings	Address 1	Fee
UC IRVINE/ ITC APEP 06	2	4/28/2015 7:58	4/28/2015 8:00	0:02:00	0:00:00	0	0	15215 Barranca Pkwy	0
UC IRVINE / ITC APEP 06	1	4/27/2015 17:21	4/28/2015 8:13	14:51:38	1:46:06	4.671195	1.962	15215 Barranca Pkwy	0
UC IRVINE/ ITC APEP OS	1	4/27/2015 16:42	4/28/2015 7:33	14:50:31	0:48:40	1.758276	0.738	15215 Barranca Pkwy	0
UC IRVINE/ ITC APEP 06	1	4/24/2015 16:44	4/27/2015 8:09	63:25:12	1:39:26	4.380051	1.84	15215 Barranca Pkwy	0
UC IRVINE/ ITC APEP 05	1	4/24/2015 16:42	4/27/2015 7:26	62:43:28	0:53:30	2.050837	0.861	15215 Barranca Pkwy	0
UC IRVINE/ ITC APEP 06	1	4/23/2015 17:22	4/24/2015 8:13	14:51:28	1:32:49	4.008071	1.683	15215 Barranca Pkwy	0
UC IRVINE/ ITC APEP 05	1	4/23/2015 16:43	4/24/2015 7:28	14:45:35	0:24:33	1.134172	0.476	15215 Barranca Pkwy	0
UC IRVINE/ ITC APEP 06	1	4/22/2015 17:18	4/23/2015 8:11	14:53:01	1:33:50	4.094944	1.72	15215 Barranca Pkwy	0

Station Name	Port	Start Date	End Date	Total Duration (hh:mm:ss)	Charging Time (hh:mm:ss)	Energy (kWh)	GHG Savings	Address 1	Fee
UC IRVINE/ ITCAPEP 05	1	4/22/2015 16:47	4/23/2015 7:23	14:36:00	1:37:30	4.381402	1.84	15215 Barranca Pkwy	0
UC IRVINE/ ITC APEP 05	1	4/21/2015 17:20	4/22/2015 8:13	14:52:39	1:32:28	4.04898	1.701	15215 Barranca Pkwy	0
UC IRVINE/ ITC APEP 06	1	4/21/2015 16:46	4/22/2015 7:24	14:38:09	0:47:29	1.441859	0.606	15215 Barranca Pkwy	0
UC IRVINE/ ITC APEP 06	1	4/20/2015 17:24	4/21/2015 8:41	15:17:42	2:00:09	5.462579	2.294	15215 Barranca Pkwy	0
UC IRVINE/ ITC APEP 05	1	4/20/2015 16:42	4/21/2015 7:28	14:45:43	0:58:54	2.1924n	0.921	15215 Barranca Pkwy	0
UC IRVINE/ ITC APEP 05	1	4/17/2015 17:59	4/20/2015 8:10	62:10:31	0:58:55	2.192998	0.921	15215 Barranca Pkwy	0
UC IRVINE/ ITC APEP 06	1	4/17/2015 16:44	4/20/2015 8:39	63:55:12	2:12:55	6.338648	2.662	15215 Barranca Pkwy	0
UC IRVINE/ ITC APEP 05	1	4/16/2015 18:30	4/17/2015 8:41	14:11:45	1:38:36	4.404262	1.85	15215 Barranca Pkwy	0

Station Name	Port	Start Date	End Date	Total Duration (hh:mm:ss)	Charging Time (hh:mm:ss)	Energy (kWh)	GHG Savings	Address 1	Fee
UC IRVINE/ ITC APEP 05	1	4/15/2015 17:20	4/16/2015 7:31	14:11:17	0:41:40	1.385402	0.582	15215 Barranca Pkwy	0
UC IRVINE/ ITC APEP 06	1	4/15/2015 17:16	4/17/2015 8:42	39:25:48	1:29:25	3.853034	1.618	15215 Barranca Pkwy	0
UC IRVINE/ ITC APEP 06	1	4/14/2015 17:19	4/15/2015 8:14	14:55:30	2:06:10	5.795197	2.434	15215 Barranca Pkwy	0
UC IRVINE/ ITC APEP 05	1	4/14/2015 16:44	4/15/2015 7:27	14:42:06	0:47:04	1.632766	0.686	15215 Barranca Pkwy	0
UC IRVINE/ ITC APEP 06	1	4/13/2015 17:21	4/14/2015 8:17	14:56:55	1:44:30	4.677422	1.965	15215 Barranca Pkwy	0
UC IRVINE/ ITC APEP 05	1	4/13/2015 16:42	4/14/2015 7:25	14:43:27	0:47:10	1.394294	0.586	15215 Barranca Pkwy	0
UC IRVINE/ ITCAPEP 05	1	4/12/2015 12:50	4/13/2015 7:25	18:34:38	0:51:24	1.459836	0.613	15215 Barranca Pkwy	0
UC IRVINE/ ITC APEP 05	2	4/10/2015 16:58	4/12/2015 12:50	43:52:32	2:42:45	8.015963	3.367	15215 Barranca Pkwy	0

Station Name	Port	Start Date	End Date	Total Duration (hh:mm:ss)	Charging Time (hh:mm:ss)	Energy (kWh)	GHG Savings	Address 1	Fee
UC IRVINE/ ITC APEP 05	2	4/8/2015 17:13	4/9/2015 3:17	20:04:34	0:40:55	1.171743	0.492	15215 Barranca Pkwy	0
UC IRVINE/ ITC APEP 06	1	4/7/2015 17:25	4/9/2015 13:18	43:53:34	1:45:39	4.660929	1.958	15215 Barranca Pkwy	0
UC IRVINE/ ITC APEP 05	2	4/7/2015 16:41	4/8/2015 8:56	16:14:43	0:51:50	1.651961	0.694	15215 Barranca Pkwy	0
UC IRVINE/ ITC APEP 06	1	4/6/2015 7:20	4/7/2015 8:10	14:49:35	1:45:10	4.882565	2.051	15215 Barranca Pkwy	0
UC IRVINE/ ITC APEP 05	2	4/6/2015 16:41	4/7/2015 7:35	14:53:10	0:51:19	1.613504	0.678	15215 Barranca Pkwy	0
UC IRVINE/ ITC APEP 05	2	4/3/2015 5:22	4/6/2015 7:24	64:01:49	0:53:59	2.691776	1.131	15215 Barranca Pkwy	0
UC IRVINE/ ITC APEP 06	1	4/2/2015 17:22	4/6/2015 8:36	87:14:12	1:30:24	4.139202	1.738	15215 Barranca Pkwy	0
UC IRVINE/ ITC APEP 05	2	4/2/2015 16:43	4/3/2015 8:13	15:30:05	1:15:20	3.109897	1.306	15215 Barranca Pkwy	0

Station Name	Port	Start Date	End Date	Total Duration (hh:mm:ss)	Charging Time (hh:mm:ss)	Energy (kWh)	GHG Savings	Address 1	Fee
UC IRVINE/ ITC APEP 06	1	4/1/2015 17:19	4/2/2015 8:34	15:14:15	2:45:46	8.048494	3.38	15215 Barranca Pkwy	0
UC IRVINE/ ITC APEP 05	2	4/1/2015 16:44	4/2/2015 7:24	14:40:26	0:36:19	1.212998	0.509	15215 Barranca Pkwy	0
UC IRVINE/ ITC APEP 06	1	4/1/2015 8:14	4/1/2015 8:16	0:01:59	0:00:00	0	0	15215 Barranca Pkwy	0
UC IRVINE/ ITC APEP 05	1	3/31/2015 17:20	3/31/2015 17:22	0:01:59	0:00:00	0	0	15215 Barranca Pkwy	0
UC IRVINE/ ITC APEP 06	1	3/31/2015 17:18	3/31/2015 17:20	0:01:59	0:00:00	0	0	15215 Barranca Pkwy	0
UC IRVINE/ ITC APEP 05	2	3/31/2015 16:44	4/1/2015 7:24	14:39:57	0:45:40	1.589287	0.668	15215 Barranca Pkwy	0
UC IRVINE/ ITC APEP 06	1	3/30/2015 17:21	3/31/2015 7:25	14:04:12	1:36:04	4.242252	1.782	15215 Barranca Pkwy	0
UC IRVINE/ ITC APEP 05	2	3/30/2015 16:44	3/31/2015 7:25	14:40:37	1:04:28	2.513648	1.056	15215 Barranca Pkwy	0

Station Name	Port	Start Date	End Date	Total Duration (hh:mm:ss)	Charging Time (hh:mm:ss)	Energy (kWh)	GHG Savings	Address 1	Fee
UC IRVINE/ ITC APEP 06	1	3/27/2015 16:44	3/30/2015 7:24	62:40:44	0:48:55	1.698268	0.713	15215 Barranca Pkwy	0
UC IRVINE/ ITC APEP 05	2	3/27/2015 16:41	3/30/2015 8:33	63:52:36	1:41:24	4.663941	1.959	15215 Barranca Pkwy	0
UC IRVINE/ ITC APEP 06	1	3/26/2015 17:15	3/27/2015 8:14	14:58:42	1:40:04	4.575298	1.922	15215 Barranca Pkwy	0
UC IRVINE/ ITC APEP 05	2	3/26/2015 16:43	3/27/201 5 7:28	14:44:51	0:46:58	1.606504	0.675	15215 Barranca Pkwy	0
UC IRVINE/ ITC APEP 06	1	3/25/2015 17:22	3/26/201 5 8:36	15:13:26	1:58:25	5.488762	2.305	15215 Barranca Pkwy	0
UC IRVINE/ ITC APEP 05	2	3/25/2015 16:42	3/26/201 5 7:26	14:44:25	0:47:24	1.675657	0.704	15215 Barranca Pkwy	0
UC IRVINE/ ITC APEP 06	2	3/24/2015 17:55	4/9/2015 13:08	379:13:14	1:34:19	4.150869	1.743	15215 Barranca Pkwy	0
UC IRVINE/ ITC APEP 06	1	3/24/2015 17:20	3/25/201 5 8:13	14:52:48	1:30:25	4.094487	1.72	15215 Barranca Pkwy	0

Station Name	Port	Start Date	End Date	Total Duration (hh:mm:ss)	Charging Time (hh:mm:ss)	Energy (kWh)	GHG Savings	Address 1	Fee
UC IRVINE/ ITC APEP 05	2	3/24/2015 16:46	3/25/201 5 7:27	14:41:18	1:00:19	2.333195	0.98	15215 Barranca Pkwy	0
UC IRVINE/ ITC APEP 05	2	3/24/2015 7:54	3/24/201 5 7:56	0:01:59	0:00:00	0	0	15215 Barranca Pkwy	0
UC IRVINE/ ITC APEP 06	2	3/23/2015 17:19	3/24/201 5 8:10	14:51:34	1:44:29	4.485964	1.884	15215 Barranca Pkwy	0
UC IRVINE/ ITC APEP 06	1	3/23/2015 16:41	3/24/201 5 7:24	14:43:32	0:46:29	1.554873	0.653	15215 Barranca Pkwy	0
UC IRVINE/ ITC APEP 06	2	3/20/2015 17:21	3/23/201 5 8:43	63:22:14	1:39:24	4.303642	1.808	15215 Barranca Pkwy	0
UC IRVINE/ ITC APEP 06	1	3/20/2015 16:44	3/23/201 5 7:24	62:40:24	0:59:49	2.2234	0.934	15215 Barranca Pkwy	0
UC IRVINE/ ITC APEP 05	1	3/19/2015 17:42	3/24/201 5 7:54	110:12:46	2:15:44	6.746084	2.833	15215 Barranca Pkwy	0
UC IRVINE/ ITC APEP 06	2	3/19/2015 17:14	3/20/201 5 8:36	15:22:09	1:30:25	4.109229	1.726	15215 Barranca Pkwy	0

Station Name	Port	Start Date	End Date	Total Duration (hh:mm:ss)	Charging Time (hh:mm:ss)	Energy (kWh)	GHG Savings	Address 1	Fee
UC IRVINE/ ITC APEP 06	1	3/19/2015 16:41	3/20/201 5 7:27	14:46:06	0:48:10	1.709406	0.718	15215 Barranca Pkwy	0
UC IRVINE/ ITC APEP 05	1	3/19/2015 9:15	3/19/201 517:41	8:25:59	2:31:00	7.220543	3.033	15215 Barranca Pkwy	0
UC IRVINE/ ITC APEP 05	1	3/19/2015 9:11	3/19/201 5 9:15	0:04:45	0:00:00	0	0	15215 Barranca Pkwy	0
UC IRVINE/ ITC APEP 06	1	3/18/2015 17:18	3/19/201 5 8:15	14:56:47	2:00:34	5.815688	2.443	15215 Barranca Pkwy	0
UC IRVINE/ ITC APEP 05	2	3/18/2015 16:44	3/19/201 5 7:24	14:39:43	0:47:15	1.615574	0.679	15215 Barranca Pkwy	0
UC IRVINE / ITC APEP 06	1	3/17/2015 17:15	3/18/201 5 8:12	14:56:56	1:40:00	4.480675	1.882	15215 Barranca Pkwy	0
UC IRVINE/ ITC APEP 05	2	3/17/2015 16:44	3/18/201 5 7:26	14:41:17	1:01:59	2.479518	1.041	15215 Barranca Pkwy	0
UC IRVINE/ ITC APEP 06	1	3/16/2015 16:44	3/17/201 5 7:26	14:41:50	0:49:05	1.734621	0.729	15215 Barranca Pkwy	0

Station Name	Port	Start Date	End Date	Total Duration (hh:mm:ss)	Charging Time (hh:mm:ss)	Energy (kWh)	GHG Savings	Address 1	Fee
UC IRVINE/ ITC APEP 05	2	3/16/2015 16:42	3/17/2015 5 8:37	15:55:17	1:35:50	4.398946	1.848	15215 Barranca Pkwy	0
UC IRVINE/ ITC APEP 06	2	3/14/2015 13:12	3/19/2015 9:29	116:16:55	2:08:25	5.861264	2.462	15215 Barranca Pkwy	0
UC IRVINE/ ITC APEP 05	2	3/13/2015 16:44	3/16/2015 7:32	62:47:36	1:30:54	3.928241	1.65	15215 Barranca Pkwy	0
UC IRVINE/ ITC APEP 06	2	3/12/2015 17:58	3/14/2015 5 7:51	37:53:55	1:40:05	4.502819	1.891	15215 Barranca Pkwy	0
UC IRVINE/ ITC APEP 06	1	3/12/2015 17:19	3/16/2015 5 8:15	86:56:11	1:41:30	4.514653	1.896	15215 Barranca Pkwy	0
UC IRVINE/ ITC APEP 05	2	3/12/2015 16:42	3/13/2015 5 7:27	14:44:50	1:07:44	2.702405	1.135	15215 Barranca Pkwy	0
UC IRVINE/ ITC APEP 06	2	3/12/2015 9:45	3/12/2015 5 9:47	0:01:59	0:00:00	0	0	15215 Barranca Pkwy	0
UC IRVINE/ ITC APEP 06	2	3/11/2015 17:21	3/12/2015 5 8:34	15:12:35	2:15:34	6.313108	2.652	15215 Barranca Pkwy	0

Station Name	Port	Start Date	End Date	Total Duration (hh:mm:ss)	Charging Time (hh:mm:ss)	Energy (kWh)	GHG Savings	Address 1	Fee
UC IRVINE/ ITC APEP 06	1	3/11/2015 16:54	3/12/201 5 9:46	16:51:42	2:24:55	6.747493	2.834	15215 Barranca Pkwy	0
UC IRVINE/ ITC APEP 05	2	3/11/2015 16:44	3/12/201 5 7:32	14:47:42	0:45:14	1.448886	0.609	15215 Barranca Pkwy	0
UC IRVINE/ ITC APEP 05	1	3/11/2015 8:58	3/19/201 5 9:09	192:11:19	0:00:39	0.033506	0.014	15215 Barranca Pkwy	0
UC IRVINE/ ITC APEP 06	1	3/10/2015 17:19	3/11/201 5 8:15	14:56:39	2:19:10	6.514345	2.736	15215 Barranca Pkwy	0
UC IRVINE/ ITC APEP 05	1	3/10/2015 16:41	3/11/201 5 8:15	15:34:10	0:43:49	1.46341	0.615	15215 Barranca Pkwy	0
UC IRVINE/ ITC APEP 06	1	3/9/2015 7:18	3/10/201 5 8:11	14:53:12	1:39:50	4.318474	1.814	15215 Barranca Pkwy	0
UC IRVINE/ ITC APEP OS	1	3/9/2015 16:40	3/10/201 5 7:35	14:54:22	0:42:29	1.342364	0.564	15215 Barranca Pkwy	0
UC IRVINE/ ITC APEP 06	1	3/6/2015 7:16	3/9/2015 8:16	61:59:51	1:30:24	4.113191	1.728	15215 Barranca Pkwy	0

Station Name	Port	Start Date	End Date	Total Duration (hh:mm:ss)	Charging Time (hh:mm:ss)	Energy (kWh)	GHG Savings	Address 1	Fee
UC IRVINE/ ITC APEP 05	1	3/6/2015 16:42	3/9/2015 7:26	61:43:38	0:46:29	1.571586	0.66	15215 Barranca Pkwy	0
UC IRVINE/ ITC APEP 06	1	3/5/2015 17:19	3/6/2015 8:14	14:55:01	1:52:35	5.01336	2.106	15215 Barranca Pkwy	0
UC IRVINE/ ITC APEP 05	1	3/5/2015 16:43	3/6/2015 7:29	14:46:18	0:45:14	1.572736	0.661	15215 Barranca Pkwy	0
UC IRVINE/ ITC APEP 06	1	3/4/2015 7:17	3/5/2015 8:18	15:00:46	1:32:30	3.933972	1.652	15215 Barranca Pkwy	0
UC IRVINE/ ITC APEP 05	1	3/4/2015 16:40	3/5/2015 7:26	14:45:59	0:46:44	1.384484	0.581	15215 Barranca Pkwy	0
UC IRVINE/ ITC APEP 05	2	3/4/2015 15:55	3/11/2015 8:57	160:02:51	2:21:35	6.705939	2.816	15215 Barranca Pkwy	0
UC IRVINE/ ITC APEP 06	1	3/3/2015 17:20	3/4/2015 8:16	14:56:29	1:34:59	4.03403	1.694	15215 Barranca Pkwy	0
UC IRVINE/ ITC APEP 05	2	3/3/2015 16:44	3/4/2015 7:27	14:42:59	1:17:20	3.0028	1.261	15215 Barranca Pkwy	0

Station Name	Port	Start Date	End Date	Total Duration (hh:mm:ss)	Charging Time (hh:mm:ss)	Energy (kWh)	GHG Savings	Address 1	Fee
UC IRVINE/ ITC APEP 06	1	3/2/2015 17:20	3/3/2015 8:38	15:17:44	1:49:55	4.839282	2.032	15215 Barranca Pkwy	0
UC IRVINE/ ITC APEP 05	2	3/2/2015 16:46	3/3/2015 7:25	14:39:30	0:47:30	1.4908n	0.626	15215 Barranca Pkwy	0
UC IRVINE/ ITC APEP 05	1	3/2/2015 15:50	3/4/2015 7:57	40:06:52	2:35:35	7.484052	3.143 .	15215 Barranca Pkwy	0
UC IRVINE/ ITC APEP 05	2	2/27/2015 16:39	3/2/2015 7:27	62:47:27	0:45:34	1.371923	0.576	15215 Barranca Pkwy	0
UC IRVINE/ ITC APEP 05	1	2/27/2015 15:52	3/2/2015 8:48	64:56:00	2:17:06	6.496641	2.729	15215 Barranca Pkwy	0
UC IRVINE/ ITC APEP 06	1	2/26/2015 17:17	3/2/2015 8:18	87:00:42	1:38:34	4.259623	1.789	15215 Barranca Pkwy	0
UC IRVINE/ ITC APEP 05	2	2/26/2015 16:38	2/27/201 5 7:27	14:48:45	1:07:45	2.552337	1.072	15215 Barranca Pkwy	0
UC IRVINE/ ITC APEP 06	1	2/25/2015 18:32	2/26/201 5 7:28	12:56:03	0:46:19	1.446528	0.608	15215 Barranca Pkwy	0

Station Name	Port	Start Date	End Date	Total Duration (hh:mm:ss)	Charging Time (hh:mm:ss)	Energy (kWh)	GHG Savings	Address 1	Fee
UC IRVINE/ ITC APEP OS	2	2/25/2015 17:18	2/26/2015 8:14	14:56:42	1:41:54	4.47097	1.878	15215 Barranca Pkwy	0
UC IRVINE/ ITC APEP 06	2	2/24/2015 19:42	3/4/2015 9:02	181:20:09	1:54:44	5.036279	2.115	15215 Barranca Pkwy	0
UC IRVINE/ ITC APEP 06	1	2/24/2015 18:36	2/25/2015 7:29	12:53:07	0:53:55	1.639179	0.688	15215 Barranca Pkwy	0
UC IRVINE/ ITC APEP 05	2	2/24/2015 17:16	2/25/2015 8:18	15:02:04	1:39:59	4.760154	1.999	15215 Barranca Pkwy	0
UC IRVINE/ ITC APEP 06	2	2/23/2015 17:14	2/24/2015 8:12	14:57:29	1:38:35	4.356563	1.83	15215 Barranca Pkwy	0
UC IRVINE/ ITC APEP 06	1	2/23/2015 16:43	2/24/201 5 7:24	14:41:09	0:45:49	1.426898	0.599	15215 Barranca Pkwy	0
UC IRVINE/ ITC APEP 05	2	2/23/2015 15:37	2/24/2015 7:56	16:18:56	1:40:50	4.353548	1.828	15215 Barranca Pkwy	0
UC IRVINE/ ITC APEP 06	2	2/20/2015 18:36	2/23/2015 7:29	60:52:51	1:04:09	2.341251	0.983	15215 Barranca Pkwy	0

Station Name	Port	Start Date	End Date	Total Duration (hh:mm:ss)	Charging Time (hh:mm:ss)	Energy (kWh)	GHG Savings	Address 1	Fee
UC IRVINE/ ITC APEP 06	1	2/20/2015 17:44	2/23/2015 7:54	62:10:01	1:36:05	4.079488	1.713	15215 Barranca Pkwy	0
UC IRVINE/ ITC APEP OS	2	2/20/2015 16:45	2/23/2015 8:41	63:56:05	1:35:04	4.400776	1.848	15215 Barranca Pkwy	0
UC IRVINE/ ITC APEP 06	2	2/19/2015 17:43	2/20/2015 7:49	14:05:45	1:35:51	4.093056	1.719	15215 Barranca Pkwy	0
UC IRVINE/ ITC APEP 06	1	2/19/2015 17:22	2/20/2015 8:21	14:59:04	1:45:25	4.754979	1.997	15215 Barranca Pkwy	0
UC IRVINE/ ITC APEP OS	2	2/19/2015 16:42	2/20/2015 7:24	14:42:48	1:05:00	2.450701	1.029	15215 Barranca Pkwy	0
UC IRVINE/ ITC APEP 06	2	2/18/2015 18:34	2/19/2015 7:29	12:55:40	0:48:24	1.486865	0.624	15215 Barranca Pkwy	0
UC IRVINE/ ITC APEP 06	1	2/18/2015 17:17	2/19/2015 8:17	14:59:42	1:39:30	4.360911	1.832	15215 Barranca Pkwy	0
UC IRVINE/ ITC APEP 05	2	2/18/2015 15:41	2/19/2015 7:56	16:15:10	1:38:14	4.255418	1.787	15215 Barranca Pkwy	0

Station Name	Port	Start Date	End Date	Total Duration (hh:mm:ss)	Charging Time (hh:mm:ss)	Energy (kWh)	GHG Savings	Address 1	Fee
UC IRVINE/ ITC APEP 06	2	2/17/2015 18:34	2/18/2015 7:27	12:53:31	0:49:34	1.497889	0.629	15215 Barranca Pkwy	0
UC IRVINE/ ITC APEP 06	1	2/17/2015 17:49	2/18/2015 7:56	14:07:00	1:54:30	5.298019	2.225	15215 Barranca Pkwy	0
UC IRVINE/ ITC APEP 05	2	2/17/2015 17:16	2/18/2015 8:20	15:04:08	1:41:05	4.584232	1.925	15215 Barranca Pkwy	0
UC IRVINE/ ITC APEP 06	2	2/16/2015 17:53	2/17/2015 7:57	14:04:23	1:58:09	5.198339	2.183	15215 Barranca Pkwy	0
UC IRVINE/ ITC APEP 06	1	2/16/2015 17:15	2/17/2015 8:35	15:19:06	1:42:55	4.414073	1.854	15215 Barranca Pkwy	0
UC IRVINE/ ITC APEP 05	1	2/16/2015 16:42	2/20/2015 16:01	95:18:52	2:19:59	6.633152	2.786	15215 Barranca Pkwy	0
UC IRVINE/ ITC APEP 06	1	2/16/2015 16:39	2/16/2015 16:41	0:02:01	0:00:00	0	0	15215 Barranca Pkwy	0
UC IRVINE/ ITC APEP OS	1	2/16/2015 7:58	2/16/2015 8:06	0:07:36	0:07:19	0.399765	0.168	15215 Barranca Pkwy	0

Station Name	Port	Start Date	End Date	Total Duration (hh:mm:ss)	Charging Time (hh:mm:ss)	Energy (kWh)	GHG Savings	Address 1	Fee
UC IRVINE/ ITC APEP OS	2	2/13/2015 18:33	2/17/2015 7:26	84:52:35	0:44:59	1.522969	0.64	15215 Barranca Pkwy	0
UC IRVINE/ ITC APEP 06	1	2/13/2015 16:41	2/16/2015 8:19	63:37:29	1:29:40	3.912734	1.643	15215 Barranca Pkwy	0
UC IRVINE/ ITC APEP 06	2	2/12/2015 17:49	2/14/2015 14:37	44:47:43	1:36:30	4.328851	1.818	15215 Barranca Pkwy	0
UC IRVINE/ ITC APEP 06	1	2/12/2015 17:19	2/13/2015 8:13	14:54:20	1:43:54	4.627239	1.943	15215 Barranca Pkwy	0
UC IRVINE/ ITC APEP 06	1	2/12/2015 17:18	2/12/2015 17:19	0:00:41	0:00:00	0	0	15215 Barranca Pkwy	0
UC IRVINE/ ITC APEP 06	2	2/11/2015 17:54	2/12/2015 7:57	14:02:14	1:55:19	5.395715	2.266	15215 Barranca Pkwy	0
UC IRVINE/ ITC APEP 06	1	2/11/2015 17:17	2/12/2015 8:15	14:57:48	1:40:51	4.4304	1.861	15215 Barranca Pkwy	0
UC IRVINE/ ITC APEP OS	2	2/11/2015 16:52	2/13/2015 8:37	39:45:26	1:14:59	3.09386	1.299	15215 Barranca Pkwy	0

Station Name	Port	Start Date	End Date	Total Duration (hh:mm:ss)	Charging Time (hh:mm:ss)	Energy (kWh)	GHG Savings	Address 1	Fee
UC IRVINE/ ITC APEP 06	2	2/10/2015 17:15	2/11/2015 8:09	14:54:06	1:34:49	4.106845	1.725	15215 Barranca Pkwy	0
UC IRVINE/ ITC APEP 06	1	2/10/2015 16:48	2/11/2015 8:30	15:42:26	1:21:40	3.428705	1.44	15215 Barranca Pkwy	0
UC IRVINE/ ITC APEP OS	1	2/10/2015 16:18	2/16/2015 7:57	135:38:32	0:00:00	0	0	15215 Barranca Pkwy	0
UC IRVINE/ ITC APEP OS	2	2/10/2015 15:36	2/11/2015 7:57	16:21:02	2:58:35	8.868728	3.725	15215 Barranca Pkwy	0
UC IRVINE/ ITC APEP 06	2	2/9/2015 18:34	2/10/2015 7:25	12:50:32	1:04:59	2.392108	1.005	15215 Barranca Pkwy	0
UC IRVINE/ ITC APEP 06	1	2/9/2015 17:14	2/10/201 5 8:14	14:59:32	1:28:10	3.846573	1.616	15215 Barranca Pkwy	0
UC IRVINE/ ITC APEP 05	2	2/9/2015 16:51	2/10/2015 8:31	15:40:34	1:17:39	3.420633	1.437	15215 Barranca Pkwy	0
UC IRVINE/ ITC APEP OS	1	2/9/2015 6:12	2/10/2015 7:09	14:57:28	1:34:20	3.86516	1.623	15215 Barranca Pkwy	0

Station Name	Port	Start Date	End Date	Total Duration (hh:mm:ss)	Charging Time (hh:mm:ss)	Energy (kWh)	GHG Savings	Address 1	Fee
UC IRVINE/ ITC APEP 06	2	2/6/2015 17:14	2/9/2015 8:41	63:26:42	1:42:05	4.418874	1.856	15215 Barranca Pkwy	0
UC IRVINE/ ITC APEP 06	1	2/6/2015 16:47	2/9/2015 7:09	62:22:07	1:34:43	3.865283	1.623	15215 Barranca Pkwy	0
UC IRVINE/ ITC APEP OS	2	2/6/2015 16:15	2/9/2015 8:29	64:14:02	1:23:30	3.544336	1.489	15215 Barranca Pkwy	0
UC IRVINE/ ITC APEP 06	2	2/5/2015 17:14	2/6/2015 8:13	14:58:27	1:35:55	4.374079	1.837	15215 Barranca Pkwy	0
UC IRVINE/ ITC APEP 06	1	2/5/2015 16:50	2/6/2015 7:09	14:18:08	1:36:50	3.92547	1.649	15215 Barranca Pkwy	0
UC IRVINE/ ITC APEP OS	2	2/5/2015 16:48	2/6/2015 8:32	15:43:50	1:17:39	3.35234	1.408	15215 Barranca Pkwy	0
UC IRVINE/ ITC APEP 06	1	2/5/2015 8:14	2/5/2015 8:16	0:02:00	0:00:00	0	0	15215 Barranca Pkwy	0
UC IRVINE/ ITC APEP 06	2	2/4/2015 8:32	2/5/2015 7:28	12:56:04	0:53:40	1.784304	0.749	15215 Barranca Pkwy	0

Station Name	Port	Start Date	End Date	Total Duration (hh:mm:ss)	Charging Time (hh:mm:ss)	Energy (kWh)	GHG Savings	Address 1	Fee
UC IRVINE/ ITC APEP 06	1	2/4/2015 17:18	2/5/2015 8:14	14:56:08	1:39:05	4.630707	1.945	15215 Barranca Pkwy	0
UC IRVINE/ ITC APEP 05	2	2/4/2015 6:50	2/5/2015 8:36	15:46:16	1:17:13	3.284257	1.379	15215 Barranca Pkwy	0
UC IRVINE/ ITC APEP 06	2	2/3/2015 17:13	2/4/2015 8:14	15:00:46	1:40:24	4.463834	1.875	15215 Barranca Pkwy	0
UC IRVINE/ ITC APEP 06	1	2/3/2015 16:48	2/4/2015 7:10	14:22:36	1:34:35	3.779239	1.587	15215 Barranca Pkwy	0
UC IRVINE/ ITC APEP 05	2	2/3/2015 16:47	2/4/2015 8:31	15:43:24	1:19:59	3.481852	1.462	15215 Barranca Pkwy	0
UC IRVINE/ ITC APEP 06	2	2/2/2015 18:33	2/3/2015 7:36	13:02:57	0:00:00	0	0	15215 Barranca Pkwy	0
UC IRVINE/ ITC APEP 06	1	2/2/2015 17:20	2/3/2015 8:17	14:57:01	1:39:09	4.383729	1.841	15215 Barranca Pkwy	0
UC IRVINE/ ITC APEP OS	2	2/2/2015 16:52	2/3/2015 8:36	15:44:03	1:11:44	3.041397	1.277	15215 Barranca Pkwy	0

Station Name	Port	Start Date	End Date	Total Duration (hh:mm:ss)	Charging Time (hh:mm:ss)	Energy (kWh)	GHG Savings	Address 1	Fee
UC IRVINE/ ITC APEP 06	2	1/30/2015 16:49	2/2/2015 8:37	63:47:24	1:25:09	3.515797	1.477	15215 Barranca Pkwy	0
UC IRVINE/ ITC APEP OS	2	1/30/2015 16:44	2/2/2015 7:24	62:39:32	0:45:20	1.378043	0.579	15215 Barranca Pkwy	0
UC IRVINE/ ITC APEP 06	2	1/29/2015 18:32	1/30/201 5 7:24	12:52:06	0:47:05	1.391543	0.584	15215 Barranca Pkwy	0
UC IRVINE/ ITC APEP OS	1	1/29/2015 17:47	2/9/2015 9:21	255:34:50	1:42:08	4.70877	1.978	15215 Barranca Pkwy	0
UC IRVINE/ ITC APEP 06	1	1/29/2015 17:16	2/2/2015 8:27	87:11:06	1:35:30	4.131788	1.735	15215 Barranca Pkwy	0
UC IRVINE/ ITC APEP 06	2	1/28/2015 18:32	1/29/201 5 7:33	13:00:54	0:40:20	1.373308	0.577	15215 Barranca Pkwy	0
UC IRVINE/ ITC APEP 06	1	1/28/2015 17:11	1/29/201 5 8:12	15:00:40	1:34:14	4.382095	1.84	15215 Barranca Pkwy	0
UC IRVINE/ ITC APEP 05	2	1/28/2015 16:47	1/30/201 5 8:34	39:46:55	1:21:54	3.31414	1.392	15215 Barranca Pkwy	0

Station Name	Port	Start Date	End Date	Total Duration (hh:mm:ss)	Charging Time (hh:mm:ss)	Energy (kWh)	GHG Savings	Address 1	Fee
UC IRVINE/ ITC APEP 06	2	1/27/2015 18:34	1/28/201 5 7:24	12:50:01	0:53:04	1.698339	0.713	15215 Barranca Pkwy	0
UC IRVINE/ ITC APEP 05	1	1/27/2015 17:43	1/29/201 5 7:57	38:13:50	2:00:10	5.469545	2.297	15215 Barranca Pkwy	0
UC IRVINE/ ITC APEP 05	2	1/27/2015 17:18	1/28/201 5 8:11	14:53:41	1:36:24	4.197258	1.763	15215 Barranca Pkwy	0
UC IRVINE/ ITC APEP 06	1	1/27/2015 16:41	1/28/2015 8:32	15:51:31	1:24:18	3.492489	1.467	15215 Barranca Pkwy	0
UC IRVINE/ ITC APEP 06	2	1/26/2015 18:35	1/27/2015 7:26	12:51:04	0:47:09	1.50606	0.633	15215 Barranca Pkwy	0
UC IRVINE/ ITC APEP 05	1	1/26/2015 17:43	1/27/2015 8:01	14:17:56	1:41:59	4.454643	1.871	15215 Barranca Pkwy	0
UC IRVINE/ ITC APEP 05	2	1/26/2015 17:20	1/27/2015 8:13	14:53:13	1:47:15	4.704223	1.976	15215 Barranca Pkwy	0
UC IRVINE/ ITC APEP 06	1	1/26/2015 16:41	1/27/2015 8:33	15:51:28	2:16:45	6.324527	2.656	15215 Barranca Pkwy	0

Station Name	Port	Start Date	End Date	Total Duration (hh:mm:ss)	Charging Time (hh:mm:ss)	Energy (kWh)	GHG Savings	Address 1	Fee
UC IRVINE/ ITC APEP OS	1	1/23/2015 18:35	1/26/2015 7:26	60:51:23	1:01:14	2.157269	0.906	15215 Barranca Pkwy	0
UC IRVINE/ ITC APEP 05	2	1/23/2015 17:12	1/26/2015 8:11	62:58:56	1:36:30	4.417889	1.856	15215 Barranca Pkwy	0
UC IRVINE/ ITC APEP 06	1	1/23/2015 16:45	1/23/2015 16:47	0:01:59	0:00:00	0	0	15215 Barranca Pkwy	0
UC IRVINE/ ITC APEP 06	1	1/23/2015 16:44	1/23/2015 16:45	0:01:03	0:00:00	0	0	15215 Barranca Pkwy	0
UC IRVINE/ ITC APEP OS	2	1/22/2015 17:20	1/23/2015 8:14	14:53:19	1:41:20	4.45833	1.872	15215 Barranca Pkwy	0
UC IRVINE/ ITC APEP 05	1	1/21/2015 18:36	1/22/2015 7:26	12:49:55	1:00:30	2.124774	0.892	15215 Barranca Pkwy	0
UC IRVINE/ ITC APEP 05	2	1/21/2015 17:20	1/22/2015 8:12	14:52:15	1:31:31	3.877477	1.629	15215 Barranca Pkwy	0
UC IRVINE/ ITC APEP 06	1	1/21/2015 14:50	1/26/2015 16:42	19:25:12	0:57:14	2.055437	0.863	15215 Barranca Pkwy	0

Station Name	Port	Start Date	End Date	Total Duration (hh:mm:ss)	Charging Time (hh:mm:ss)	Energy (kWh)	GHG Savings	Address 1	Fee
UC IRVINE/ ITC APEP 06	1	1/20/2015 17:17	1/21/2015 8:11	14:54:00	1:41:39	4.376949	1.838	15215 Barranca Pkwy	0
UC IRVINE/ ITC APEP 06	1	1/19/2015 18:08	1/20/2015 8:12	14:04:01	1:39:26	4.279915	1.798	15215 Barranca Pkwy	0
UC IRVINE/ ITC APEP 05	2	1/16/2015 8:33	1/16/2015 8:33	0:00:00	0:00:00	0	0	15215 Barranca Pkwy	0
UC IRVINE/ ITC APEP 06	1	1/15/2015 17:14	1/19/2015 9:22	88:08:12	1:39:44	4.337662	1.822	15215 Barranca Pkwy	0
UC IRVINE/ ITC APEP OS	1	1/15/2015 16:48	1/16/2015 8:37	15:48:39	1:23:15	3.469564	1.457	15215 Barranca Pkwy	0
UC IRVINE/ ITC APEP 06	1	1/14/2015 17:03	1/15/2015 8:17	15:13:23	1:37:10	4.167182	1.75	15215 Barranca Pkwy	0
UC IRVINE/ ITC APEP 06	1	1/13/2015 17:17	1/14/2015 8:13	14:55:45	1:39:34	4.294996	1.804	15215 Barranca Pkwy	0
UC IRVINE/ ITC APEP 06	1	1/12/2015 17:19	1/13/2015 8:15	14:56:00	1:41:34	4.294517	1.804	15215 Barranca Pkwy	0

Station Name	Port	Start Date	End Date	Total Duration (hh:mm:ss)	Charging Time (hh:mm:ss)	Energy (kWh)	GHG Savings	Address 1	Fee
UC IRVINE/ ITC APEP 06	1	1/9/2015 17:11	1/12/2015 8:10	62:58:57	1:34:40	3.944278	1.657	15215 Barranca Pkwy	0
UC IRVINE/ ITC APEP 05	2	1/8/2015 17:13	1/9/2015 8:11	14:58:12	1:32:24	3.886827	1.632	15215 Barranca Pkwy	0
UC IRVINE/ ITC APEP OS	2	1/7/2015 17:11	1/8/2015 8:17	15:05:49	1:41:58	4.387179	1.843	15215 Barranca Pkwy	0

Source: ChargePoint

APPENDIX B:

ChargePoint CT 400 Specifications

Figure 9 below shows the specifications for ChargePoint 4000 Family.

Figure 9: ChargePoint CT 4000 Specifications

CT4000 Family Specifications

Electrical Input	Single Port	Dual Port
AC Power Input Rating - Standard	200/240VAC 60Hz single phase @ 32A	200/240VAC 60Hz single phase @ 32A x 2
AC Power Input Rating - Power Sharing	n/a	200/240 VAC 60Hz single phase @ 32A
Input Power Connections - Standard	One 40A branch circuit	Two independent 40A branch circuits
Input Power Connections - Power Sharing	n/a	One 40A branch circuit
Required Service Panel Breaker - Standard	40A dual pole (non-GFCI type)	40A dual pole (non-GFCI type) x 2
Required Service Panel Breaker - Power Sharing	n/a	40A dual pole (non-GFCI type)
Service Panel GFCI	Do not provide external GFCI as it may conflict with internal GFCI (CCID)	
Wiring - Standard	3-wire (L1, L2, Earth)	5-wire (L1, L1, L2, L2, Earth)
Wiring - Power Sharing	n/a	3-wire (L1, L2, Earth)
Standby Power	15W typical (standby), 20W maximum (operation)	

Electrical Output	Single Port	Dual Port
AC - Standard	7.2kW (240VAC @ 30A)	7.2kW (240VAC @ 30A) x 2
AC - Power Sharing	n/a	7.2kW (240VAC @ 30A) x 1 OR 3.6kW (240VAC @ 16A) x 2

Functional Interfaces	Single Port	Dual Port
Connector(s) Type	SAE J1772™	SAE J1772™ x 2
Charging Cable Length	18' (5.5 meters)	18' (5.5 meters) x 2
Overhead Cable Management System	Yes	Yes
Card Reader	ISO 15693, 14443, NFC	
Loading Holster	Yes	Yes x 2

Safety and Connectivity Features	Single Port	Dual Port
Ground Fault Detection	20mA CCID with auto retry	
Open Safety Ground Detection	Continuously monitors presence of safety (green wire) ground connection	
Plug-Out Detection	Power terminated per SAE J1772™ specifications	
Power Measurement Accuracy	+/- 2% from 2% to full scale (32A)	
Power Report/Store Interval	15 minute, aligned to hour	
Local Area Network	2.4 GHz Wi-Fi (802.11 b/g/n)	
Wide Area Network	3G GSM, 3G CDMA	

Safety and Operational Ratings	Single Port	Dual Port
Enclosure Rating	Type 3R per UL 50E	
Safety Compliance	UL listed for USA and cUL certified for Canada; Complies with UL 2594, UL 2231-1, UL 2231-2, and HEC Article 625	
Surge Protection	6kV @ 5000A. In geographic areas subject to frequent thunder storms, supplemental surge protection at the service panel is recommended.	
EMC Compliance	FCC Part 15 Class A	
Operating Temperature	-22°F to 122°F (-30°C to +50°C)	
Operating Humidity	up to 85% @ +50°C (122°F) non-condensing	
Non-operating Humidity	up to 95% @ +50°C (122°F) non-condensing	
Terminal Block Temperature Rating	221°F (105°C)	
Maximum Charging Stations per 802.11 Radio Group	10. Each station must be located within 150 feet "line of sight" of a gateway station.	

ChargePoint, Inc. reserves the right to alter product offerings and specifications at any time without notice, and is not responsible for typographical or graphical errors that may appear in this document.